



01947 601301



CRAGWELL COTTAGE, AISLABY

2 BED COTTAGE



WWW.HOPEANDBRAIMESTATEAGENTS.CO.UK



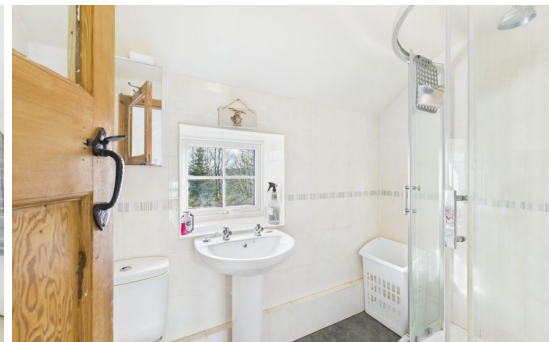
PROPERTY FEATURES

- Detached Stone Cottage with a Large Garden
- 2 Reception Rooms & Separate Kitchen
- Lounge & Dining Room with Tiled Floors
- 2 Double Bedrooms & Shower Room
- Gas Central Heating & Double-Glazing Throughout
- Garden with Timber-Built Shed with Power Supply
- Off-Street Parking & Small Woodland

Type: **COTTAGE**
Availability: **FOR SALE**
Bedrooms: **2**
Bathrooms: **1**
Reception Rooms: **2**
Parking: **DRIVEWAY**
Outside Space: **GARDEN**
Tenure: **FREEHOLD**

01947 601301

www.hopeandbraimstateagents.co.uk



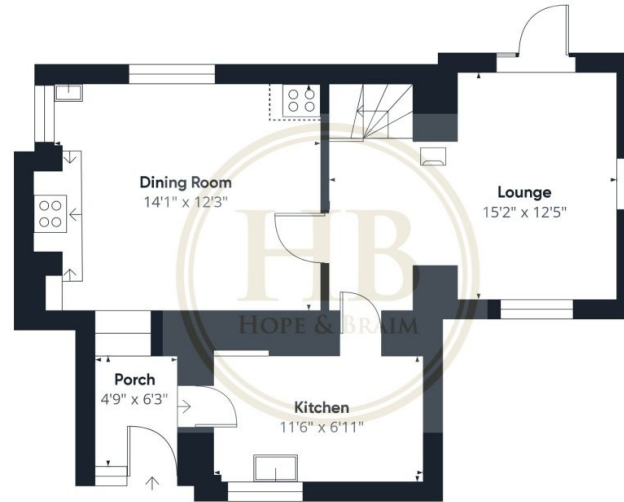
Cragwell Cottage, AISLABY- 2 bed Cottage -£325,000



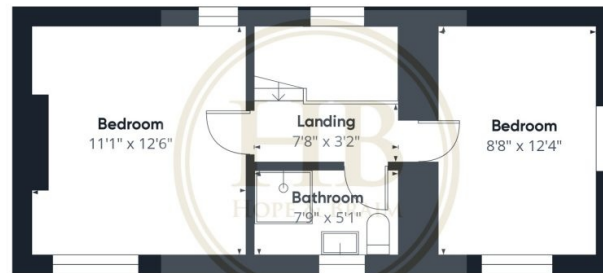
Hope & Braim are delighted to present Cragwell Cottage in Aislaby to the market. This detached stone cottage comes with a large garden and outbuilding that is tucked away off a private road in the idyllic North York Moors Village of Aislaby. The property has been extended and is surprisingly spacious inside with two reception rooms downstairs and two double bedrooms upstairs. Although the original cottage will likely date from the 1800s the accommodation has modern oil central heating and double glazing throughout, making it an energy-efficient home for a period property. There is an entrance lobby that houses the boiler that leads through to the galley kitchen that has a range of fitted base units with a sink unit and integrated appliances. The two reception rooms comprise a lounge that has a glazed door out to the garden and a dining room that has an inglenook fireplace. Upstairs there are two double bedrooms, one on either side of the galleried landing and the bathroom that has a three-piece shower suite. Outside there is a gravelled driveway to the front with secure gates leading out to the rear garden. The garden has a timber-built garden room/workshop with a power supply and a concrete pad with blockwork for another build has been started. At the top of the garden is a gate that leads to a parcel of woodland that comes with the property. The village has a pub "The Forge", a Village Hall and an active Church, plus is only a few miles from the coastal town of Whitby.



Cragwell Cottage, Aislaby - 2 bed Cottage - £325,000



Floor 0 Building 1



Floor 1 Building 1



Floor 0 Building 2

Approximate total area⁽¹⁾
1063.9 ft²
Reduced headroom
6.01 ft²

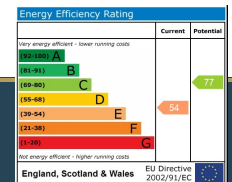
(1) Excluding balconies and terraces

Reduced headroom
..... Below 5 ft

While every attempt has been made to ensure accuracy, all measurements are approximate, not to scale. This floor plan is for illustrative purposes only.

Calculations were based on RICS IPMS 3C standard. Please note that calculations were adjusted by a third party and therefore may not comply with RICS IPMS 3C.

GIRAFFE360



Disclaimer: This brochure and property details are a representation of the property offered for sale or rent, as a guide only. Brochure content must not be relied upon as fact and does not form any part of a contract. Measurements are approximate. No fixtures or fittings, heating system or appliances have been tested, nor are they warranted by Hope & Braim or any staff member in any way as being functional or regulation compliant. Hope & Braim do not accept any liability for any loss that may be caused directly or indirectly by the brochure content, all interested parties must rely on their own, their surveyor's or solicitor's findings. We advise all interested parties to check with the local planning office for details of any application or decisions that may be consequential to your decision to purchase or rent any property. Any floor plans provided should be used for illustrative purposes only and should be used as such by any interested party.

