



01947 601301

2A POPLAR ROW, WHITBY

3 BED TERRACED HOUSE



WWW.HOPEANDBRAIMESTATEAGENTS.CO.UK



PROPERTY FEATURES

- Town House with an Rooftop Terrace
- 5 Floors of Accommodation with Period Features
- Open Plan Kitchen/Diner with Gas-Fired Stove
- Lounge with Wood Panelling & Open Fire
- 3 Double Bedrooms & 3 Bathrooms
- Electric Storage Heaters & Double-Glazing
- Roof Top Terrace with Abbey & Sea Views
- Enclosed Yard with 2 Outhouses

Type: **TERRACED HOUSE**

Availability: **FOR SALE**

Bedrooms: **3**

Bathrooms: **3**

Reception Rooms: **1**

Outside Space: **TERRACE, YARD**

Tenure: **FREEHOLD**

01947 601301

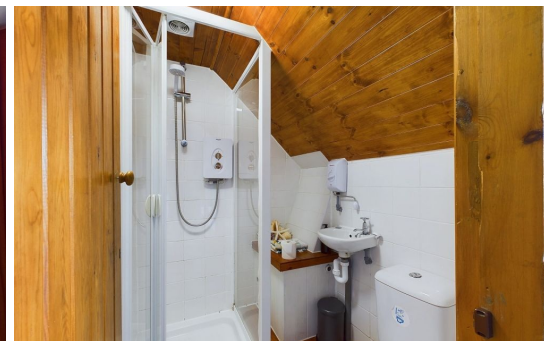
www.hopeandbraimstateagents.co.uk



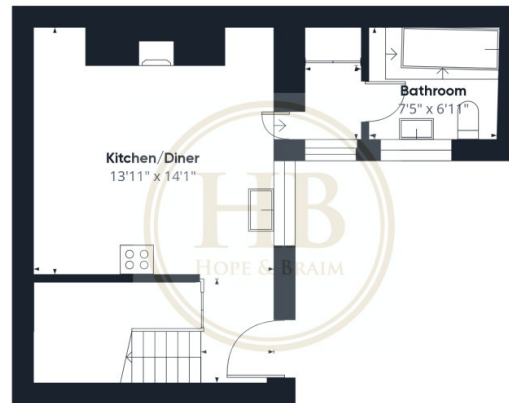
2A POPLAR ROW, WHITBY- 3 bed Terraced House -£299,950



Hope & Braim are delighted to present 2a Poplar Row in Whitby to the market. This Townhouse has period charm inside and the rare find of a roof top terrace on the top floor that boasts views over the town and out to sea. There are five floors of accommodation comprising a main room on each floor that is linked by an attractive stairwell with a carved balustrade. There is an open plan kitchen/diner with fitted cabinets and ample room for a dining table placed near the fireplace with a living flame gas stove. Adjoining the kitchen downstairs there is a bathroom with a three-piece suite including a free-standing bath. On the first floor is the lounge that has original antique panelling, an open fire, and two large windows that flood the room with natural light. Over the top three floors there are three double bedrooms, two shower rooms and a separate WC, with the top floor principal bedroom having a large dormer with glazed doors that open onto a private terrace. The terrace has room for a bistro set and has a stone parapet with iron railings on top, from which you can view Whitby's Abbey on the other side of the town. The house has been a much loved holiday home and more recently holiday accommodation, with the fixtures & fittings available by separate negotiations.



2A POPLAR ROW, WHITBY- 3 bed Terraced House -£299,950



Floor 0



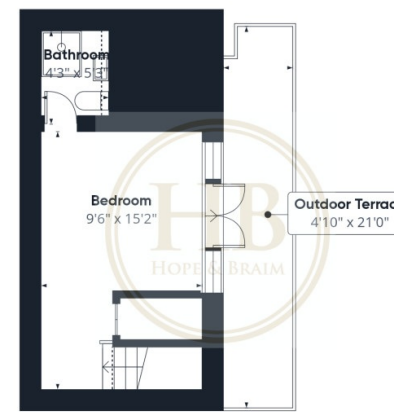
Floor 1



Floor 2



Floor 3



Floor 4



Approximate total area⁽¹⁾

1297.71 ft²

Balconies and terraces

99.46 ft²

Reduced headroom

2.33 ft²

(1) Excluding balconies and terraces

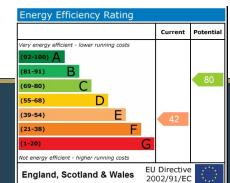
Reduced headroom

..... Below 5 ft

While every attempt has been made to ensure accuracy, all measurements are approximate, not to scale. This floor plan is for illustrative purposes only.

Calculations were based on RICS IPMS 3C standard. Please note that calculations were adjusted by a third party and therefore may not comply with RICS IPMS 3C.

GIRAFFE360



Disclaimer: This brochure and property details are a representation of the property offered for sale or rent, as a guide only.

Brochure content must not be relied upon as fact and does not form any part of a contract. Measurements are approximate.

No fixtures or fittings, heating system or appliances have been tested, nor are they warranted by Hope & Braim or any staff member in any way as being functional or regulation compliant.

Hope & Braim do not accept any liability for any loss that may be caused directly or indirectly by the brochure content, all interested parties must rely on their own, their surveyor's or solicitor's findings.

We advise all interested parties to check with the local planning office for details of any application or decisions that may be consequential to your decision to purchase or rent any property.

Any floor plans provided should be used for illustrative purposes only and should be used as such by any interested party.

