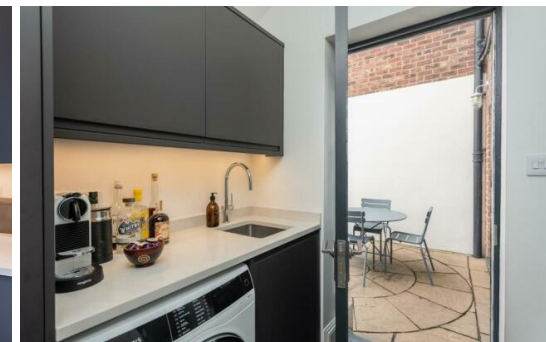




01947 601301

OAKLEY HOUSE, WHITBY

6 BED CHARACTER PROPERTY



WWW.HOPEANDBRAIMESTATEAGENTS.CO.UK



PROPERTY FEATURES

- Edwardian Villa with Period Charm & Modern Interiors
- Beautifully Refurbished with Quality Fixtures & Fittings
- 2,500 sq ft of Accommodation over 3 Floors
- Open Plan Kitchen/Diner with Bi-Folds to the Garden
- Light-Filled Lounge with Bay Window & Log Burner
- Snug, Boot Room & Separate Utility Room
- 6 Bedrooms & 3 Luxurious Bathroom Suites
- Private Courtyard Garden & On-Street Parking

Type: **CHARACTER PROPERTY**

Availability: **FOR SALE**

Bedrooms: **6**

Bathrooms: **3**

Reception Rooms: **2**

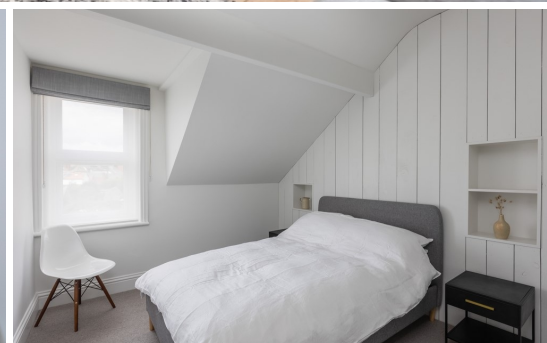
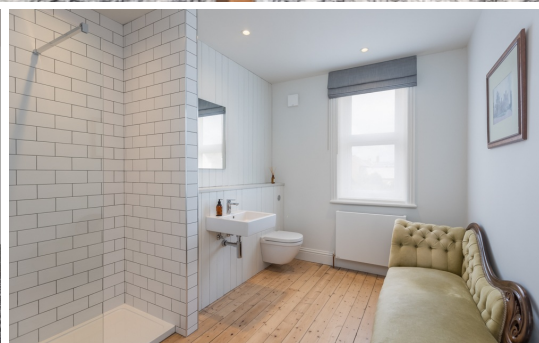
Parking: **ON ROAD PARKING**

Outside Space: **GARDEN**

Tenure: **FREEHOLD**

01947 601301

www.hopeandbraimstateagents.co.uk



OAKLEY HOUSE, WHITBY- 6 bed Character Property -£550,000

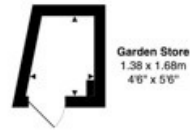


Oakley House is a stunning Edwardian Villa with modern interiors and a private courtyard garden located in the town centre, close to the shops, eateries & beach. Built in 1902 this period home has an attractive, double-fronted red-brick façade whilst inside the property boasts many features including high-ceilings and fireplaces. More recently the house has been beautifully refurbished throughout with paired back contemporary interiors that flow well and are linked to the courtyard garden via bi-fold doors from the family kitchen/diner. No expense has been spared with the refurbishment that includes bespoke joinery and quality fixtures & fittings throughout. Downstairs there is a light-filled lounge with a bay window and a log burner to add warmth, plus there is a second reception room on the other side of the entrance hall. The heart of this family home is the open plan kitchen/diner at the back of the house that has modern cabinetry with a kitchen island topped with quartzite worktops. There is a separate utility room, boot room and downstairs cloakroom. Upstairs there are six double bedrooms and three luxurious bathrooms over the top two floors making this suitable for a large family or for those that like to entertain and accommodate guests. The house is situated at the end of a terrace that is tucked away within the centre of the town so is well-served by the nearby amenities and has on-street parking directly outside with two residents permits.



OAKLEY HOUSE, WHITBY- 6 bed Character Property -£550,000

Oakley House, 14 Well Close Terrace, Whitby, YO21 3AR



Gross Internal Area: 225.0 m² ... 2422 ft² (excluding Garden Store)
All measurements are approximated for display purposes only and should be independently verified
Copyright © 2023 Matt Hillier Photographer
www.matthillier.co.uk



Ground Floor



First Floor



Second Floor

Energy Efficiency Rating		
	Current	Potential
Very energy efficient - lower running costs		
A		
B		
C		
D		
E		
F		
G		
Low energy efficient - higher running costs		
England, Scotland & Wales EU Directive 2002/91/EC		

Disclaimer: This brochure and property details are a representation of the property offered for sale or rent, as a guide only.

No fixtures or fittings, heating system or appliances have been tested, nor are they warranted by Hope & Braim or any staff member in any way as being functional or regulation compliant.

Hope & Braim do not accept any liability for any loss that may be caused directly or indirectly by the brochure content, all interested parties must rely on their own, their surveyor's or solicitor's findings.

We advise all interested parties to check with the local planning office for details of any application or decisions that may be consequential to your decision to purchase or rent any property.

Any floor plans provided should be used for illustrative purposes only and should be used as such by any interested party.

