



01947 601301



PAROCHIAL COTTAGE, WHITBY

2 BED COTTAGE



WWW.HOPEANDBRAIMESTATEAGENTS.CO.UK



PROPERTY FEATURES

- Period Cottage located in a Hidden Yard
- Living Room with a Fireplace & Views
- 2 Bedrooms & Bathroom
- Gas Central Heating
- Large Garden with Abbey Views
- In Need of Refurbishment

Type: COTTAGE
Availability: FOR SALE
Bedrooms: 2
Bathrooms: 1
Reception Rooms: 1
Outside Space: GARDEN
Tenure: FREEHOLD

01947 601301

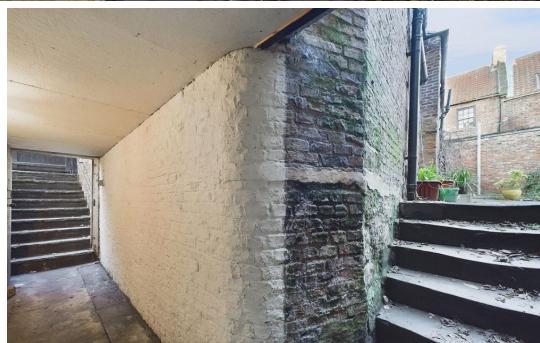
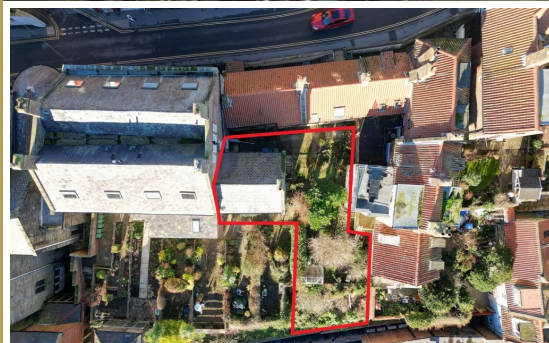
www.hopeandbraimstateagents.co.uk



PAROCHIAL COTTAGE, WHITBY- 2 bed Cottage -£189,950



Hope & Braim are delighted to present Parochial Cottage on Brunswick Street to the market. Dating from the mid 1700's, this period cottage is now in need of refurbishment and comes with a surprisingly large garden for a property in the town centre. Access is via steps down from Brunswick Street to a hidden tunnel that lies underneath 10 Brunswick Street, a Grade II Listed building that was formerly a Gentleman's Club. The cottage is attached to No.10, which was converted into apartments, and shares the same building materials, that of red brick and a slate roof. Inside the cottage is a traditional two-up, two-down layout with a lounge and kitchen downstairs, and two bedrooms and a bathroom upstairs. The lounge is well-proportioned and has a fireplace and two windows to the rear elevation that look over the gardens and rooftops of the town centre. The galley kitchen has some simple cabinets with a ceramic sink and could be opened to create an open plan lounge/kitchen. The two bedrooms comprise a large double and a small single, plus there is a bathroom with a three-piece bathroom suite, all benefiting from having gas central heating throughout. The garden is the real star of this property as its hidden away, enjoys a southerly aspect, and has views across to Whitby's Abbey.



PAROCHIAL COTTAGE, WHITBY- 2 bed Cottage -£189,950



Floor 0

Floor 1

Approximate total area⁽¹⁾

614.82 ft²

Reduced headroom

12.61 ft²

(1) Excluding balconies and terraces

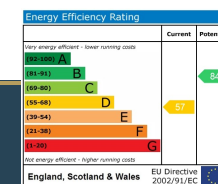
Reduced headroom

..... Below 5 ft

While every attempt has been made to ensure accuracy, all measurements are approximate, not to scale. This floor plan is for illustrative purposes only.

Calculations are based on RICS IPMS 3C standard.

GIRAFFE360



Disclaimer: This brochure and property details are a representation of the property offered for sale or rent, as a guide only.

Brochure content must not be relied upon as fact and does not form any part of a contract. Measurements are approximate.

No fixtures or fittings, heating system or appliances have been tested, nor are they warranted by Hope & Braim or any staff member in any way as being functional or regulation compliant.

Hope & Braim do not accept any liability for any loss that may be caused directly or indirectly by the brochure content, all interested parties must rely on their own, their surveyor's or solicitor's findings.

We advise all interested parties to check with the local planning office for details of any application or decisions that may be consequential to your decision to purchase or rent any property.

Any floor plans provided should be used for illustrative purposes only and should be used as such by any interested party.

