



01947 601301

APARTMENT 7, KENILWORTH HOUSE

2 BED APARTMENT



WWW.HOPEANDBRAIMESTATEAGENTS.CO.UK



PROPERTY FEATURES

- Penthouse Apartment with Sea Views
- Georgian Period Building with Lift Access
- Open Plan Living with a Lounge/Diner
- Fitted Kitchen with Integrated Appliances
- 2 Bedrooms & 2 Bathrooms, including an En-Suite
- Gas Central Heating & Double-Glazing Throughout
- Fully Furnished Holiday Let with Bookings
- 999 Year Lease from 2009 with a Service Charge of £750 (approx.)

Type: **APARTMENT**
Availability: **FOR SALE**
Bedrooms: **2**
Bathrooms: **2**
Reception Rooms: **1**
Tenure: **LEASEHOLD**

01947 601301

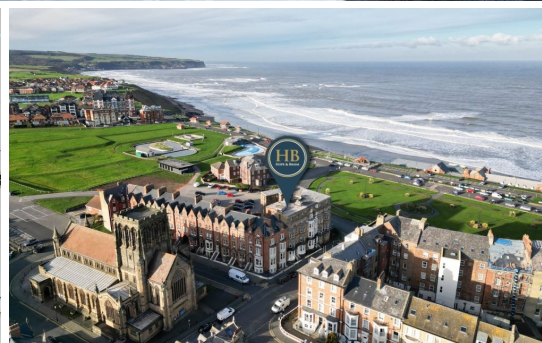
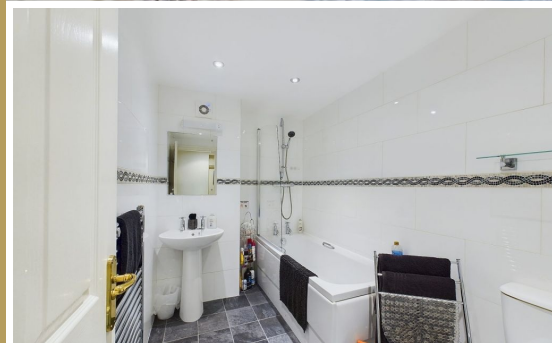
www.hopeandbraimstateagents.co.uk



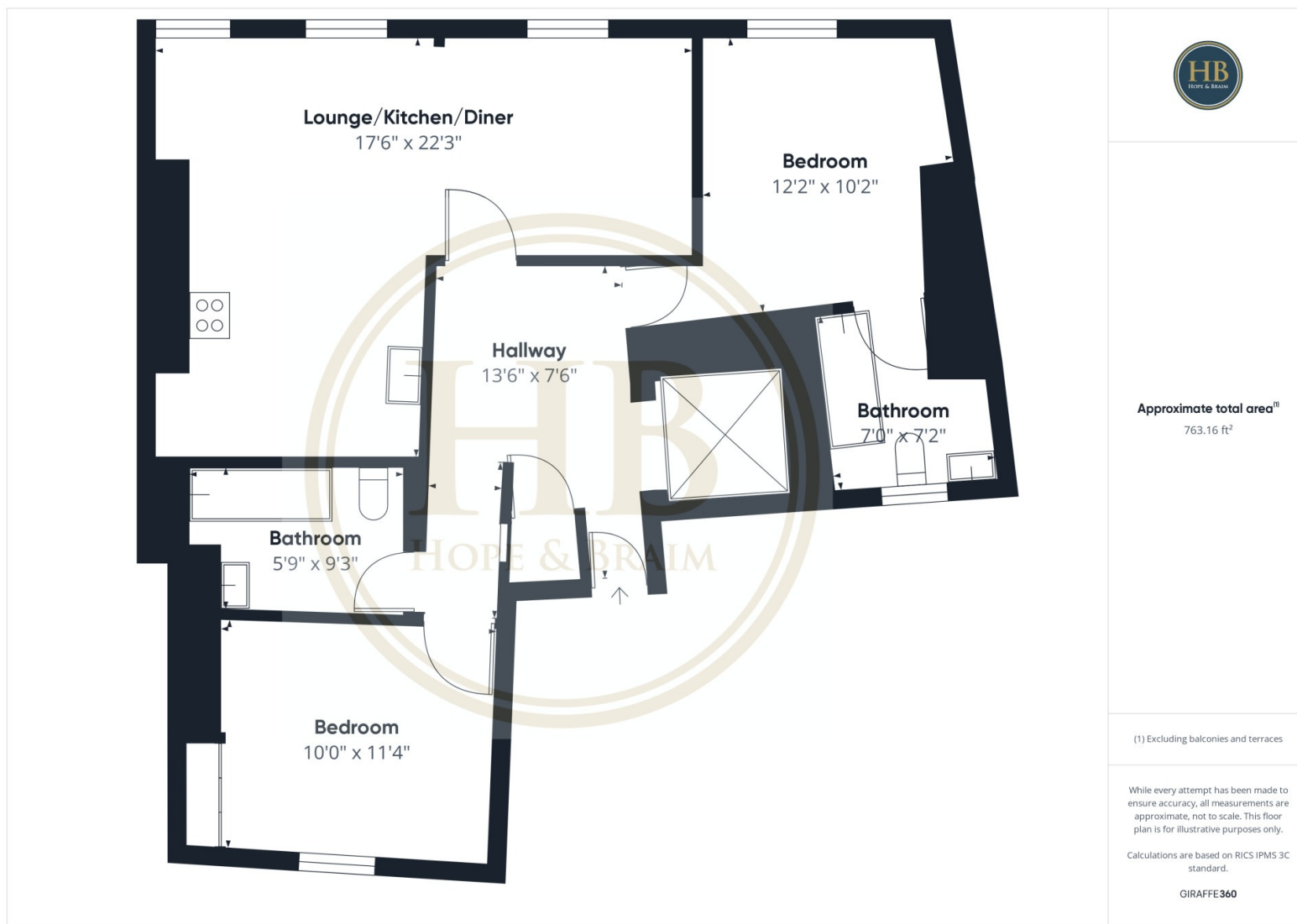
APARTMENT 7, KENILWORTH HOUSE- 2 bed Apartment -£285,000



Hope & Braim are delighted to present Apartment 7 at Kenilworth House to the market. Kenilworth House is a grand Georgian property that stands proudly on Whitby's Westcliff with sea views to the front. The building was formerly a hotel that was converted into seven luxury apartments in 2000 that benefit from having gas central heating and double-glazing throughout and are served by a lift. Apartment 7 is the Penthouse and has open plan living and two bedrooms with two bathrooms. The lift opens directly into the spacious entrance hall that leads to the accommodation. The living space is an L-Shape room with a corner sofa and a dining table that enjoys sea views. The kitchen has a full range of cabinets with integrated appliances. There are two double bedrooms comprising a double and a twin bedroom with two bathrooms, including an en-suite. Both bathrooms are fully tiled and have three-piece suites including a bath with a shower over. The apartment is very well-maintained and is a fully furnished holiday let that does have forward bookings making it an attractive buy-to-let investment, or it could be a permanent residence for those wanting one-level living on the coast.



APARTMENT 7, KENILWORTH HOUSE- 2 bed Apartment -£285,000



Disclaimer: This brochure and property details are a representation of the property offered for sale or rent, as a guide only. Brochure content must not be relied upon as fact and does not form any part of a contract. Measurements are approximate. No fixtures or fittings, heating system or appliances have been tested, nor are they warranted by Hope & Braim or any staff member in any way as being functional or regulation compliant. Hope & Braim do not accept any liability for any loss that may be caused directly or indirectly by the brochure content, all interested parties must rely on their own, their surveyor's or solicitor's findings. We advise all interested parties to check with the local planning office for details of any application or decisions that may be consequential to your decision to purchase or rent any property. Any floor plans provided should be used for illustrative purposes only and should be used as such by any interested party.