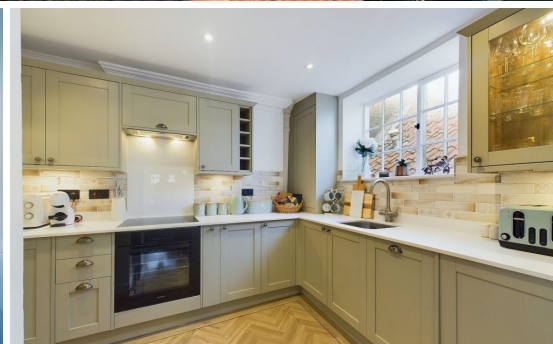




01947 601301

MARKET QUARTERS, WHITBY

3 BED APARTMENT



WWW.HOPEANDBRAIMESTATEAGENTS.CO.UK



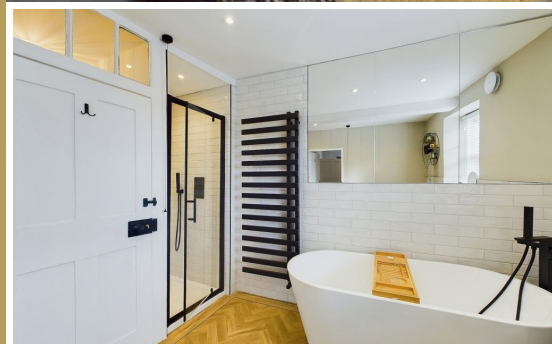
PROPERTY FEATURES

- Spacious Apartment in the Town Centre
- 2 Reception Rooms & Separate Kitchen
- 3 Bedrooms & Family Bathroom with a 4-Piece Suite
- Period Features including Exposed Stonework & Beamed Ceilings
- Fully Furnished Holiday Let with Bookings
- Located in the Heart of Whitby's Old Town

Type: **APARTMENT**
Availability: **FOR SALE**
Bedrooms: **3**
Bathrooms: **1**
Reception Rooms: **2**
Tenure: **LEASEHOLD**

01947 601301

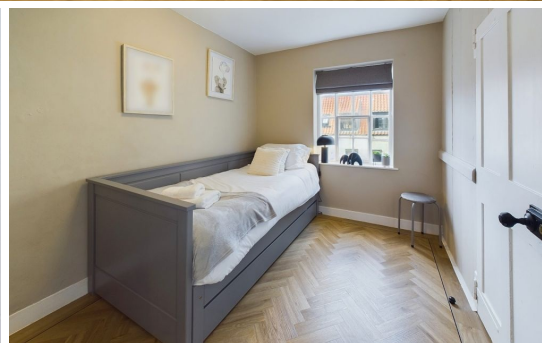
www.hopeandbraimstateagents.co.uk



MARKET QUARTERS, WHITBY- 3 bed Apartment -£299,950



Hope & Braim are delighted to present Market Quarters in Whitby's Old Market Square to the market. This grade II listed property has been brought back to life by a sympathetic refurbishment that showcases its features and provides spacious living in the heart of the old town. The apartment's accommodation is spread over three floors and is above a retail shop on the ground floor and has its own private entrance. There is an elegant lounge with pannelled walls and feature fireplace and windows with window seats that look out onto the hustle and bustle of the market square. Next door is a dining room and has real character from the bold décor and feature lighting and ample space for a dining table with seating for six. The kitchen has a good range of cabinets with marble-effect worktops and integrated appliances. On the floor above there are two bedrooms and a luxurious bathroom suite with a free-standing bath and a walk-in shower, whilst on the top floor is a third bedroom within the eaves of the roof and has the features of exposed stonework and beams. The apartment is currently a successful holiday let and is offered as a fully furnished turnkey property, making for an attractive investment in this ever popular coastal town.



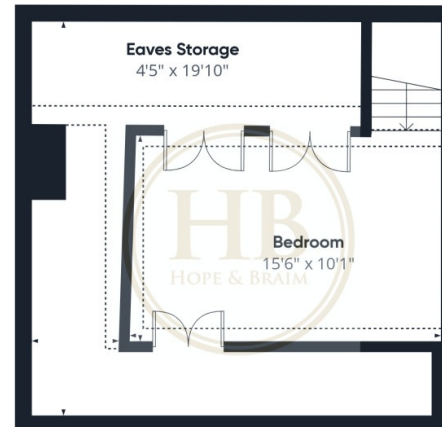
MARKET QUARTERS, WHITBY- 3 bed Apartment -£299,950



Floor 0



Floor 1



Floor 2



Approximate total area⁽¹⁾

997.28 ft²

Reduced headroom

193.43 ft²

(1) Excluding balconies and terraces

Reduced headroom

..... Below 5 ft

While every attempt has been made to ensure accuracy, all measurements are approximate, not to scale. This floor plan is for illustrative purposes only.

Calculations are based on RICS IPMS 3C standard.

GIRAFFE360

Disclaimer: This brochure and property details are a representation of the property offered for sale or rent, as a guide only.

Brochure content must not be relied upon as fact and does not form any part of a contract. Measurements are approximate.

No fixtures or fittings, heating system or appliances have been tested, nor are they warranted by Hope & Braim or any staff member in any way as being functional or regulation compliant.

Hope & Braim do not accept any liability for any loss that may be caused directly or indirectly by the brochure content, all interested parties must rely on their own, their surveyor's or solicitor's findings.

We advise all interested parties to check with the local planning office for details of any application or decisions that may be consequential to your decision to purchase or rent any property.

Any floor plans provided should be used for illustrative purposes only and should be used as such by any interested party.

