



01947 601301



## HUTTON HOUSE, 15 WELL CLOSE TERRACE

4 BED END OF TERRACE HOUSE



[WWW.HOPEANDBRAIMESTATEAGENTS.CO.UK](http://WWW.HOPEANDBRAIMESTATEAGENTS.CO.UK)





## PROPERTY FEATURES

- Victorian House with Contemporary Interiors
- Open Plan Living with Log Burning Stove
- Well-Equipped Kitchen with Granite Worktops & Integral Appliances
- 4 Bedrooms & 2 Bathrooms including an En-Suite
- Modern Gas Central Heating & Double-Glazing
- Enclosed Yard with Sun Deck & Outbuilding

Type: **END OF TERRACE HOUSE**

Availability: **FOR SALE**

Bedrooms: **4**

Bathrooms: **2**

Reception Rooms: **2**

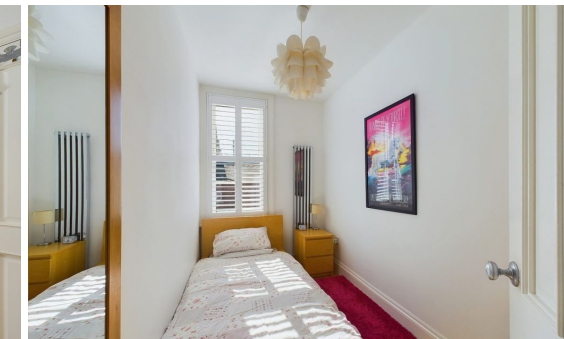
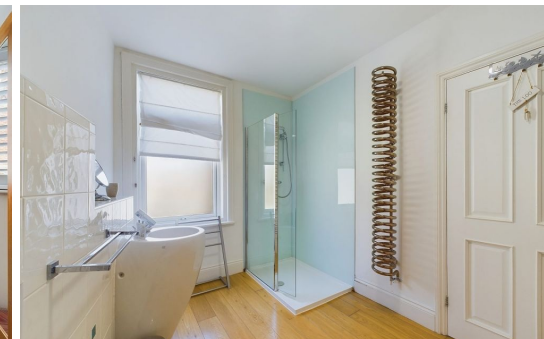
Parking: **ON ROAD PARKING**

Outside Space: **YARD**

Tenure: **FREEHOLD**

01947 601301

[www.hopeandbraimstateagents.co.uk](http://www.hopeandbraimstateagents.co.uk)

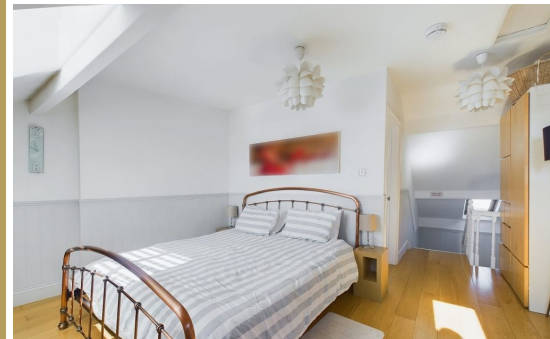


HUTTON HOUSE, 15 WELL CLOSE TERRACE- 4 bed End of Terrace House -£375,000

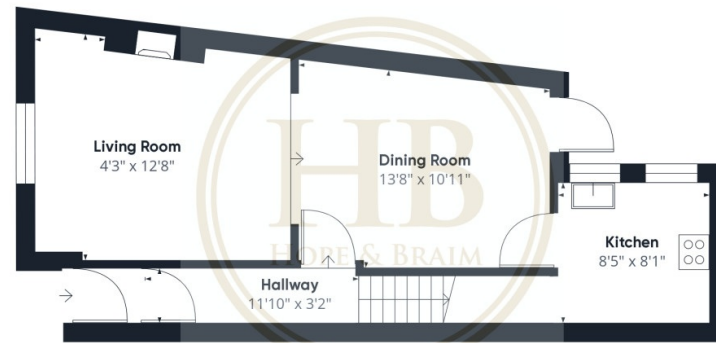




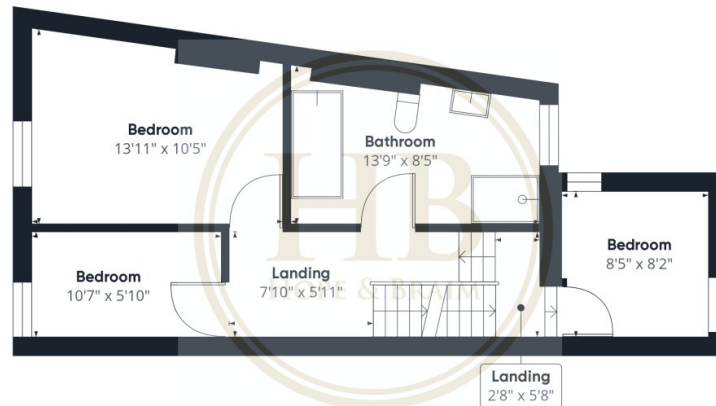
Hope & Braim are delighted to present Hutton House at 15 Well Close Terrace in Whitby. This Victorian end of terrace house is a period home with contemporary interiors and an enclosed yard with an outbuilding located in the town centre. The property is both light and spacious with three floors of accommodation and south-facing glazing and benefits from having gas central heating and double-glazing with plantation shutters. Downstairs there is an open plan layout comprising a cosy lounge with an attractive fireplace and log burner with a separate dining room connected via a large opening. At the back of the property is a well-equipped kitchen with granite worktops and integrated appliances. On the first floor there are three bedrooms comprising a double, single and bunkroom, plus a family bathroom that has a free-standing bath and walk-in shower. On the top floor there is the principal bedroom that has an en-suite shower room. Outside there is a yard that has a timber sundeck with outside seating and a brick-built outbuilding, useful for additional storage. The house has been a successful holiday let in the past but would equally make a great family home that has the town and local schools on its doorstep.



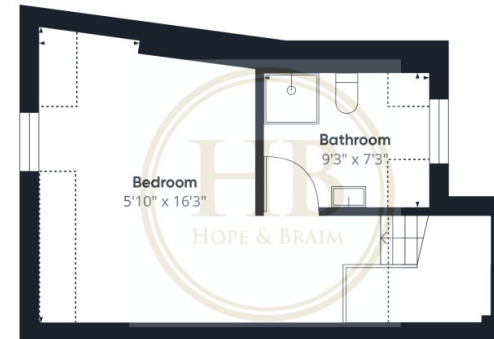
HUTTON HOUSE, 15 WELL CLOSE TERRACE- 4 bed End of Terrace House -£375,000



Floor 0



Floor 1



Floor 2

Approximate total area<sup>(1)</sup>  
1193.39 ft<sup>2</sup>  
Reduced headroom  
66.63 ft<sup>2</sup>

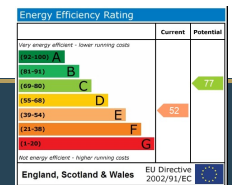
(1) Excluding balconies and terraces

Reduced headroom  
..... Below 5 ft

While every attempt has been made to ensure accuracy, all measurements are approximate, not to scale. This floor plan is for illustrative purposes only.

Calculations are based on RICS IPMS 3C standard.

GIRAFFE360



Disclaimer: This brochure and property details are a representation of the property offered for sale or rent, as a guide only.

Brochure content must not be relied upon as fact and does not form any part of a contract. Measurements are approximate.

No fixtures or fittings, heating system or appliances have been tested, nor are they warranted by Hope & Braim or any staff member in any way as being functional or regulation compliant.

Hope & Braim do not accept any liability for any loss that may be caused directly or indirectly by the brochure content, all interested parties must rely on their own, their surveyor's or solicitor's findings.

We advise all interested parties to check with the local planning office for details of any application or decisions that may be consequential to your decision to purchase or rent any property.

Any floor plans provided should be used for illustrative purposes only and should be used as such by any interested party.

