



01947 601301



CINTRA HOUSE, 5 WELL CLOSE SQUARE, WHITBY

3 BED TOWN HOUSE



WWW.HOPEANDBRAIMESTATEAGENTS.CO.UK



PROPERTY FEATURES

- Georgian Townhouse With Original Features
- Currently A Successful Holiday Let That Can Be Sold As a Going Concern
- Beautifully Renovated Throughout
- Modern Kitchen With Intergrated Appliances
- 3 Bedrooms & 2 Bathrooms Including An En-Suite & Downstairs W/C

Type: TOWN HOUSE
Availability: FOR SALE
Bedrooms: 3
Bathrooms: 2
Reception Rooms: 1
Outside Space: TERRACE
Tenure: FREEHOLD

01947 601301

www.hopeandbraimstateagents.co.uk



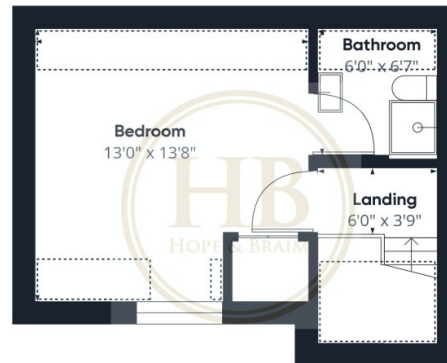
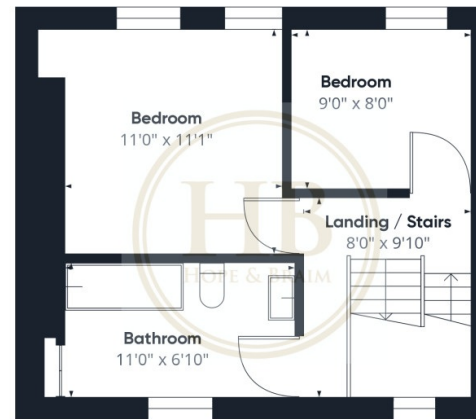
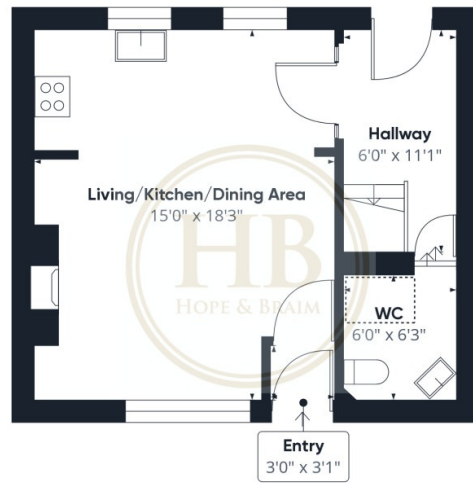
CINTRA HOUSE, 5 WELL CLOSE SQUARE, WHITBY- 3 bed Town House -£425,000



Hope & Braim are delighted to present Cintra House in Whitby to the market. A Georgian Townhouse which is situated on Well Close Square in the heart of Whitby, just off Skinner Street. This beautiful 3-bed property has been tastefully renovated to a very high standard and includes a generous sized terrace at the rear. This property benefits from having modern gas central heating, double glazed sash windows & original features throughout. Upon entrance is a modern living/kitchen/dining area that is filled with natural light. The wooden kitchen has got built in appliances, including an electric oven & hob. Through the magnificent wood & glass panelled door leads you to a spacious hallway. Off the hallway is the back door which leads you out onto a large, sunny, paved garden. Also, off the hallway a downstairs W/C. Onto the first floor, it brings you to the single & large double bedrooms, also off these rooms is a family 3-piece bathroom, with over bath shower. Up to the second floor is where the master bedroom is including an en-suite shower room. This property is currently a successful holiday let that can come fully furnished and with forward bookings making this an ideal turn-key investment or alternatively would make an amazing permanent home/second home.



CINTRA HOUSE, 5 WELL CLOSE SQUARE, WHITBY- 3 bed Town House -£425,000



Approximate total area⁽¹⁾

994.37 ft²

Reduced headroom

57.48 ft²

(1) Excluding balconies and terraces

 Reduced headroom
(below 1.5m/4.92ft)

While every attempt has been made to ensure accuracy, all measurements are approximate, not to scale. This floor plan is for illustrative purposes only.

GIRAFFE360

Disclaimer: This brochure and property details are a representation of the property offered for sale or rent, as a guide only.

Brochure content must not be relied upon as fact and does not form any part of a contract. Measurements are approximate.

No fixtures or fittings, heating system or appliances have been tested, nor are they warranted by Hope & Braim or any staff member in any way as being functional or regulation compliant.

Hope & Braim do not accept any liability for any loss that may be caused directly or indirectly by the brochure content, all interested parties must rely on their own, their surveyor's or solicitor's findings.

We advise all interested parties to check with the local planning office for details of any application or decisions that may be consequential to your decision to purchase or rent any property.

Any floor plans provided should be used for illustrative purposes only and should be used as such by any interested party.

