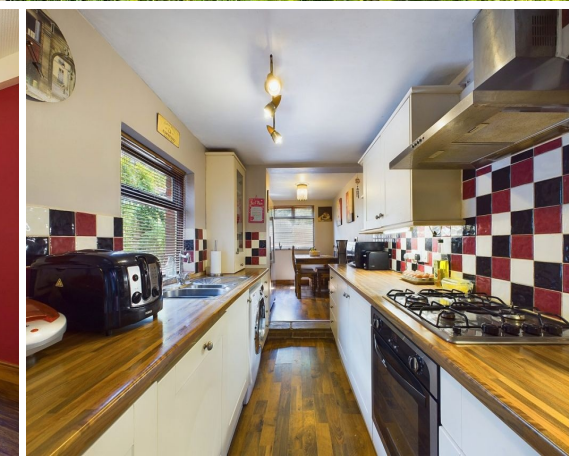
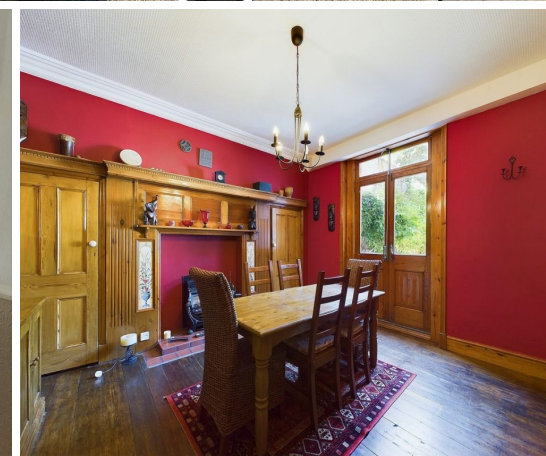




01947 601301



10 HANOVER TERRACE, WHITBY

7 BED TOWN HOUSE



WWW.HOPEANDBRAIMESTATEAGENTS.CO.UK



PROPERTY FEATURES

- Substantial Victorian Terrace with Ample Parking
- 4 Floors of Accommodation with Period Features
- Undeveloped Lower Ground Floor with Separate Access
- 2 Reception Rooms with Fireplaces & High Ceilings
- 7 Bedrooms & 3 Bathrooms, including an En-Suite
- Partial Central Heating & Single-Glazed Sash Windows
- Garden to the front and a Yard to the rear
- Off-Street Parking for Several Vehicles

Type: **TOWN HOUSE**
Availability: **FOR SALE**

Bedrooms: **7**

Bathrooms: **3**

Reception Rooms: **2**

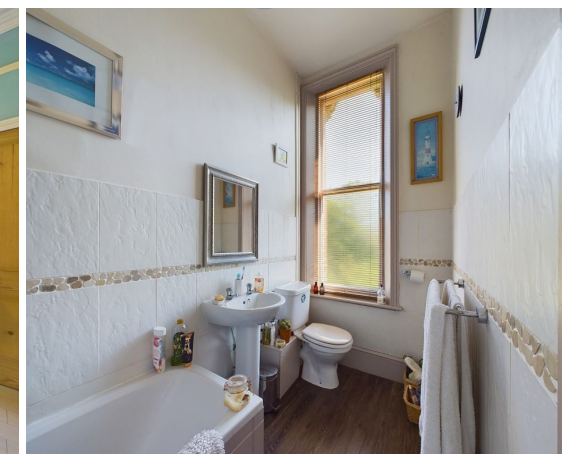
Parking: **DRIVEWAY**

Outside Space: **GARDEN, YARD**

Tenure: **FREEHOLD**

01947 601301

www.hopeandbraimstateagents.co.uk



10 HANOVER TERRACE, WHITBY- 7 bed Town House -£475,000



Hope & Braim are delighted to present 10 Hanover Terrace in Whitby to the market. A substantial Victorian Townhouse with spacious interiors and a garden plus ample parking located close to the town centre. There is nearly 3,000 sq ft over five floors including a lower ground floor that has a separate entrance and great potential to be developed into either an annexe or more accommodation. There is an elegant lounge at the front of the house with an attractive fireplace and a large bay window that floods the room with natural light. The second reception room is a formal dining room that also has a period fireplace and shares the same high ceilings. There is also a glazed door that leads out to the private courtyard to the rear. A kitchen extension houses the galley kitchen with integrated appliances and the breakfast room. Over the three upper floors there are a total of seven bedrooms and three bathrooms, including an en-suite bathroom to the principal bedroom. The property benefits from having period features including fireplaces, sash windows and a curved balustrade, plus having modern gas central heating on the lower three floors. Outside there is a garden to the front and a rear courtyard plus a hardstanding on the other side of the rear access road that offers parking for several cars.



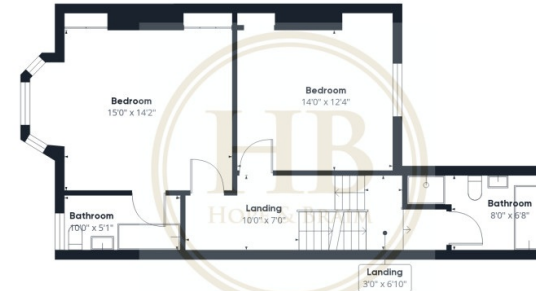
10 HANOVER TERRACE, WHITBY- 7 bed Town House -£475,000



Floor 0



Floor 1



Floor 2



Floor 3



Floor 4

Approximate total area⁽¹⁾

2928.43 ft²

Reduced headroom

69 ft²

(1) Excluding balconies and terraces

Reduced headroom
(below 1.5m/4.92ft)

While every attempt has been made to ensure accuracy, all measurements are approximate, not to scale. This floor plan is for illustrative purposes only.

GIRAFFE360

Disclaimer: This brochure and property details are a representation of the property offered for sale or rent, as a guide only.

Brochure content must not be relied upon as fact and does not form any part of a contract. Measurements are approximate.

No fixtures or fittings, heating system or appliances have been tested, nor are they warranted by Hope & Braim or any staff member in any way as being functional or regulation compliant.

Hope & Braim do not accept any liability for any loss that may be caused directly or indirectly by the brochure content, all interested parties must rely on their own, their surveyor's or solicitor's findings.

We advise all interested parties to check with the local planning office for details of any application or decisions that may be consequential to your decision to purchase or rent any property.

Any floor plans provided should be used for illustrative purposes only and should be used as such by any interested party.

