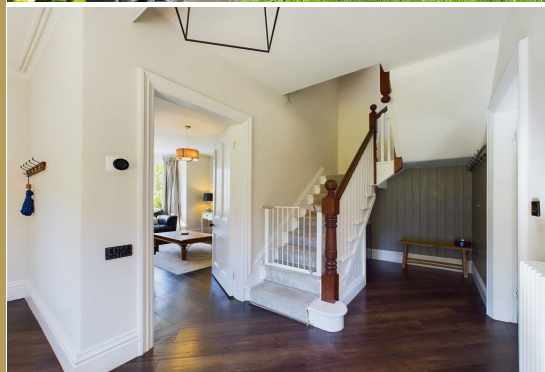




01947 601301



10 LOWDALE LANE,  
SLEIGHTS  
5 BED SEMI-DETACHED HOUSE



[WWW.HOPEANDBRAIMESTATEAGENTS.CO.UK](http://WWW.HOPEANDBRAIMESTATEAGENTS.CO.UK)



## PROPERTY FEATURES

- Semi-Detached Stone Victorian Villa
- Beautifully Presented Period Home with Features
- 1,700 sq ft over 3 Floors of Accommodation
- Cosy Lounge with Log Burner & Bay Window
- Open Plan Kitchen/Diner with Integrated Appliances
- 5 Double Bedrooms & 2 Bathrooms
- Gas Central Heating & Double-Glazing Throughout
- South-Facing Rear Garden with Patio
- Garage, Car Port & Driveway with Parking for 2 Cars
- Fully Furnished Holiday Let with Bookings

Type: SEMI-DETACHED HOUSE

Availability: FOR SALE

Bedrooms: 5

Bathrooms: 2

Reception Rooms: 1

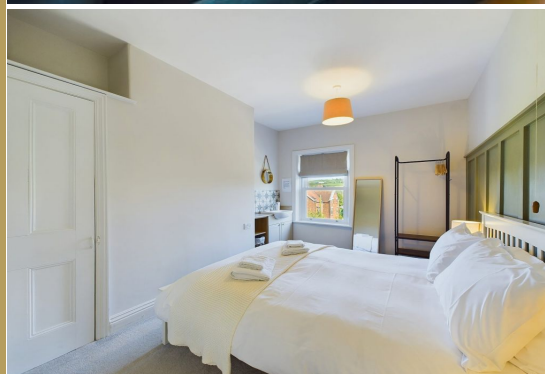
Parking: CARPORT, DRIVEWAY, GARAGE

Outside Space: GARDEN, PATIO

Tenure: FREEHOLD

01947 601301

[www.hopeandbraimestateagents.co.uk](http://www.hopeandbraimestateagents.co.uk)



10 LOWDALE LANE, SLEIGHTS - 5 bed Semi-Detached House - £475,000



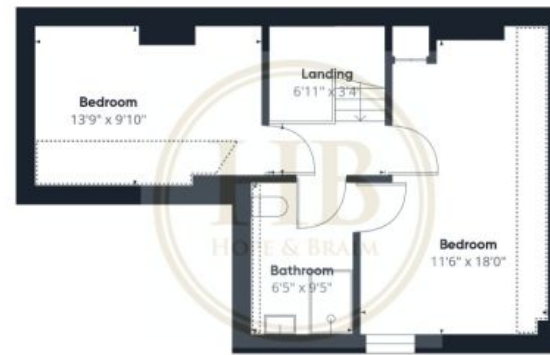
10 LOWDALE LANE, SLEIGHTS - 5 bed Semi-Detached House - £475,000



Floor 0



Floor 1



Floor 2

Approximate total area<sup>(1)</sup>  
1693.25 ft<sup>2</sup>

Reduced headroom  
88.96 ft<sup>2</sup>

(1) Excluding balconies and terraces

Reduced headroom:  
(below 1.5m/4.92ft)

While every attempt has been made to ensure accuracy, all measurements are approximate, not to scale. This floor plan is for illustrative purposes only.

GIRAFFE360

Disclaimer: This brochure and property details are a representation of the property offered for sale or rent, as a guide only.

Brochure content must not be relied upon as fact and does not form any part of a contract. Measurements are approximate.

No fixtures or fittings, heating system or appliances have been tested, nor are they warranted by Hope & Braim or any staff member in any way as being functional or regulation compliant.

Hope & Braim do not accept any liability for any loss that may be caused directly or indirectly by the brochure content, all interested parties must rely on their own, their surveyor's or solicitor's findings.

We advise all interested parties to check with the local planning office for details of any application or decisions that may be consequential to your decision to purchase or rent any property.

Any floor plans provided should be used for illustrative purposes only and should be used as such by any interested party.

