

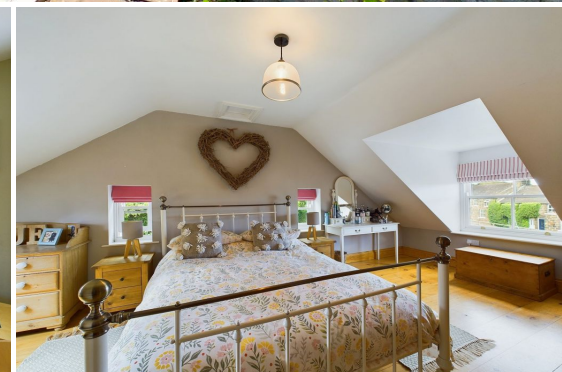
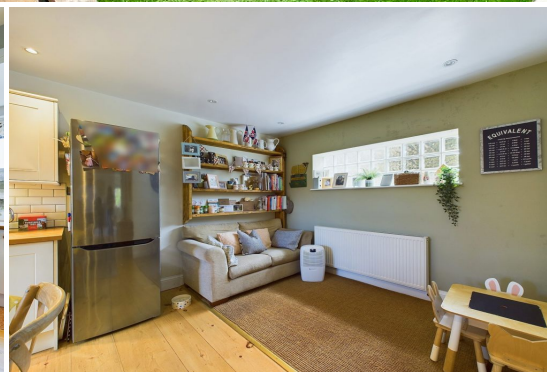


01947 601301



MITRE COTTAGE,
GLAISDALE

3 BED COTTAGE



WWW.HOPEANDBRAIMESTATEAGENTS.CO.UK



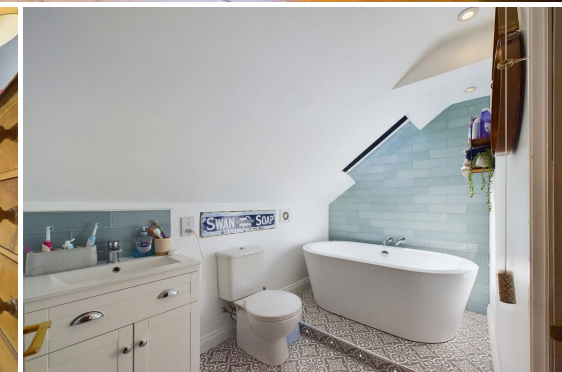
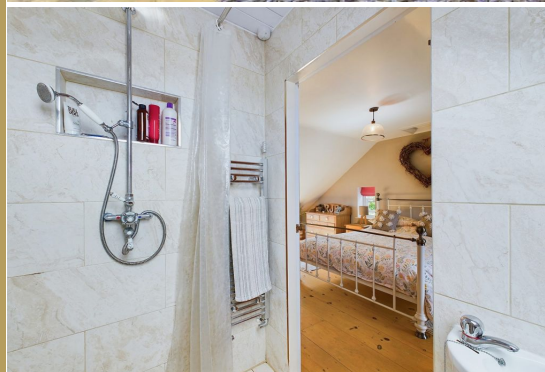
PROPERTY FEATURES

- Stone Cottage with a Garden & Parking
- Former Public House converted into 3 Cottages
- Open Plan Living with Lounge & Kitchen/Diner
- 3 Bedrooms & 2 Bathrooms including an En-Suite
- LPG Central Heating & Double-Glazing
- Private Garden with Artificial Lawn & Patio

Type: **COTTAGE**
Availability: **FOR SALE**
Bedrooms: **3**
Bathrooms: **2**
Reception Rooms: **1**
Parking: **ALLOCATED PARKING**
Outside Space: **GARDEN, TERRACE**
Tenure: **FREEHOLD**

01947 601301

www.hopeandbraimstateagents.co.uk



MITRE COTTAGE, GLAISDALE - 3 bed Cottage - £325,000



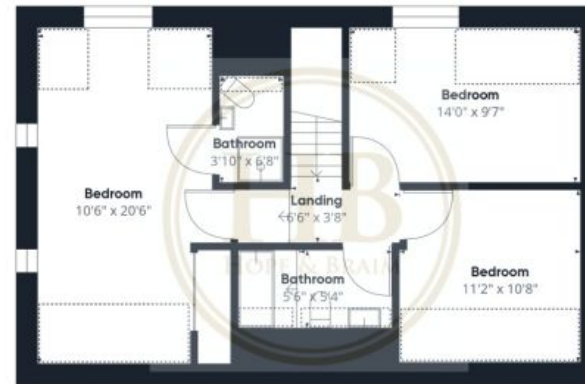
Hope & Braim are delighted to present Mitre Cottage in Glaisdale to the market. An attractive stone cottage with open plan living and private gardens and parking located on an elevated plot at the heart of this North Yorks Moors Village. What was formerly the Public House "The Mitre" was converted into three dwellings that all have their own gardens and share a car park to the rear of the properties. The cottage is surprisingly light and spacious, which is helped by having an open plan layout downstairs with large windows on two sides. There is a large living room that has a brick fireplace with a LPG burning stove set within which keeps the room cosy when it is cooler. When the sun shines there are glazed doors that lead out onto a sheltered patio, perfect for family BBQs or pizza nights. A large opening leads through to the kitchen/diner that has shaker-style cabinets, integrated appliances, and Oak Worktops. There is also space for a dining table and a snug area with a sofa, plus there is a utility room with downstairs WC and a porch for storing boots and coats. Upstairs there are three bedrooms and two bathrooms, including the principal bedroom having its own en-suite shower and the family bathroom having a free-standing bath. Outside the garden is low-maintenance with an artificial lawn and stone-flagged patio and pathways. We feel this would make an excellent family home with the rare amenity for a cottage in this village of having a garden and parking.



MITRE COTTAGE, GLAISDALE - 3 bed Cottage - £325,000



Floor 0



Floor 1

Approximate total area⁽¹⁾
1300.27 ft²

Reduced headroom
142.05 ft²

(1) Excluding balconies and terraces

Reduced headroom:
(below 1.5m/4.92ft)

While every attempt has been made to ensure accuracy, all measurements are approximate, not to scale. This floor plan is for illustrative purposes only.

GIRAFFE360



Disclaimer: This brochure and property details are a representation of the property offered for sale or rent, as a guide only.

Brochure content must not be relied upon as fact and does not form any part of a contract. Measurements are approximate.

No fixtures or fittings, heating system or appliances have been tested, nor are they warranted by Hope & Braim or any staff member in any way as being functional or regulation compliant.

Hope & Braim do not accept any liability for any loss that may be caused directly or indirectly by the brochure content, all interested parties must rely on their own, their surveyor's or solicitor's findings.

We advise all interested parties to check with the local planning office for details of any application or decisions that may be consequential to your decision to purchase or rent any property.

Any floor plans provided should be used for illustrative purposes only and should be used as such by any interested party.