

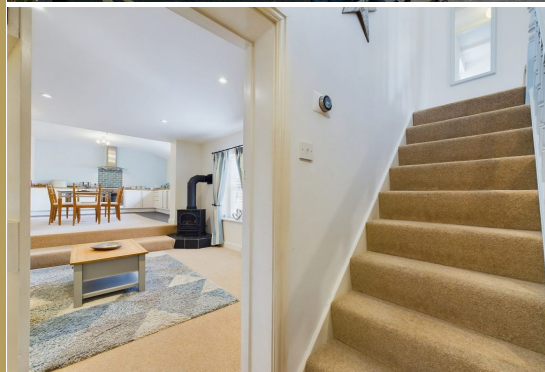


01947 601301



CAROL'S COTTAGE, 49 FLOWERGATE

2 BED MAISONETTE



WWW.HOPEANDBRAIMESTATEAGENTS.CO.UK



PROPERTY FEATURES

- Luxurious Apartment with Abbey Views
- Open Plan with Lounge & Kitchen/Diner
- 2 Double Bedrooms & 2 Bathrooms
- Stylish Interiors with Quality Fixtures & Fittings
- Fully Furnished Holiday Let with Bookings
- Town Centre Location close to Cafes, Pubs & Shops

Type: MAISONETTE
Availability: FOR SALE
Bedrooms: 2
Bathrooms: 2
Reception Rooms: 1
Tenure: FREEHOLD

01947 601301

www.hopeandbraimestateagents.co.uk



CAROL'S COTTAGE, 49 FLOWERGATE - 2 bed Maisonette - £285,000



The apartment has separate access to the rear of the building off a private shared yard. The apartment is surprisingly light and spacious, largely due to the rear extension on the first floor that comprises an open plan lounge and kitchen/diner that has elevated views across the rooftops and out to sea. The lounge area has a log burning stove that creates a warm and cosy atmosphere with a split level leading through to the kitchen/diner that has fitted cabinets and integrated appliances. Upstairs there are two double bedrooms with the first floor bedroom having a beamed ceiling and large Georgian Sash Window on the front elevation, whilst the top floor bedroom has a Dormer Window that has views over Whitby's Old Town. Both bedrooms have their own luxurious bathrooms that are fully tiled and having quality white suites. The apartment is exceptionally well presented and with its convenient location in the town centre close to the cafes, pubs and shops. The apartment is currently a holiday let, called "Carol's Cottage" and is offered fully furnished and with bookings, making this an attractive buy-to-let investment.



CAROL'S COTTAGE, 49 FLOWERGATE - 2 bed Maisonette - £285,000



Floor 0



Floor 1



Floor 2

Approximate total area⁽¹⁾
881.18 ft²

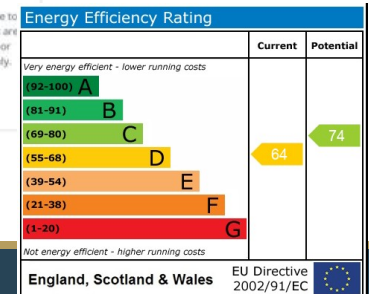
Reduced headroom
52.39 ft²

(1) Excluding balconies and terraces

☐ Reduced headroom:
(below 1.5m/4.92ft)

While every attempt has been made to ensure accuracy, all measurements are approximate, not to scale. This floor plan is for illustrative purposes only.

GIRAFFE360



Disclaimer: This brochure and property details are a representation of the property offered for sale or rent, as a guide only. Brochure content must not be relied upon as fact and does not form any part of a contract. Measurements are approximate. No fixtures or fittings, heating system or appliances have been tested, nor are they warranted by Hope & Braim or any staff member in any way as being functional or regulation compliant. Hope & Braim do not accept any liability for any loss that may be caused directly or indirectly by the brochure content, all interested parties must rely on their own, their surveyor's or solicitor's findings. We advise all interested parties to check with the local planning office for details of any application or decisions that may be consequential to your decision to purchase or rent any property. Any floor plans provided should be used for illustrative purposes only and should be used as such by any interested party.

