

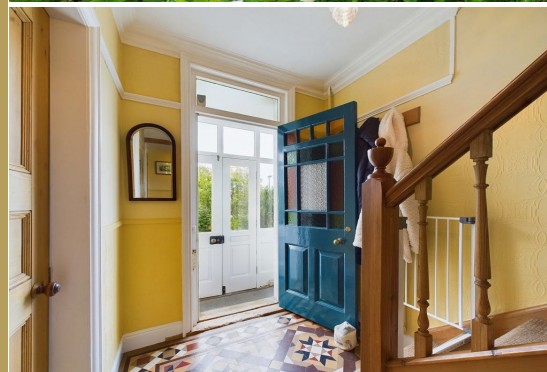


01947 601301



6 ELM GROVE, ROBIN HOODS BAY

5 BED TERRACED HOUSE



WWW.HOPEANDBRAIMESTATEAGENTS.CO.UK



## PROPERTY FEATURES

- Edwardian Terrace with a Garden & Garage
- Beautifully Presented Period Home with Features
- 2 Well Proportioned Reception Rooms with Bays
- Breakfast Kitchen with Utility & Downstairs Shower
- 5 Double Bedrooms & 3 Bathrooms, including an En-Suite
- Gas Central Heating & Double-Glazing Throughout
- South-Facing Garden & Allotment Garden
- Garage & Private Parking for 2 Cars

Type: **TERRACED HOUSE**  
Availability: **FOR SALE**  
Bedrooms: **5**  
Bathrooms: **3**  
Reception Rooms: **2**  
Parking: **DRIVEWAY, GARAGE**  
Outside Space: **GARDEN**  
Tenure: **FREEHOLD**

01947 601301

[www.hopeandbraimestateagents.co.uk](http://www.hopeandbraimestateagents.co.uk)



6 ELM GROVE, ROBIN HOODS BAY - 5 bed Terraced House - £495,000



Hope & Braim are delighted to present 6 Elm Grove in Robin Hoods Bay to the market. This Edwardian Terrace is a stunning period home full of character and has the benefit of a south-facing garden and private parking, making it a rare find in this popular coastal village. The property has been beautifully refurbished with great care to preserve the Arts & Crafts features including the original tiled hallway floor, carved balustrade and fireplaces. The owner has also chosen suitable furnishings and furniture to match the period by using William Morris wallpaper and Mackintosh furniture. There are two equally well-proportioned reception rooms, both with Bay windows at the front that flood the house with natural light. To the rear of the ground floor there is a breakfast kitchen that has newly installed shaker-style cabinets with hard-wearing composite worktops, plus an extension that contains a utility room and downstairs shower room. On the first floor there are three double bedrooms and two bathrooms, including an en-suite, and on the top floor there are a further two double bedrooms, both with dormers that have views across to Ravenscar. Elm Grove is a private road that runs parallel to the former rail line and have the benefit of parking and a garage behind the terrace and a well-kept garden to the front with an additional garden plot where the rail line once ran.



6 ELM GROVE, ROBIN HOODS BAY - 5 bed Terraced House - £495,000



Disclaimer: This brochure and property details are a representation of the property offered for sale or rent, as a guide only. Brochure content must not be relied upon as fact and does not form any part of a contract. Measurements are approximate. No fixtures or fittings, heating system or appliances have been tested, nor are they warranted by Hope & Braim or any staff member in any way as being functional or regulation compliant. Hope & Braim do not accept any liability for any loss that may be caused directly or indirectly by the brochure content, all interested parties must rely on their own, their surveyor's or solicitor's findings. We advise all interested parties to check with the local planning office for details of any application or decisions that may be consequential to your decision to purchase or rent any property. Any floor plans provided should be used for illustrative purposes only and should be used as such by any interested party.