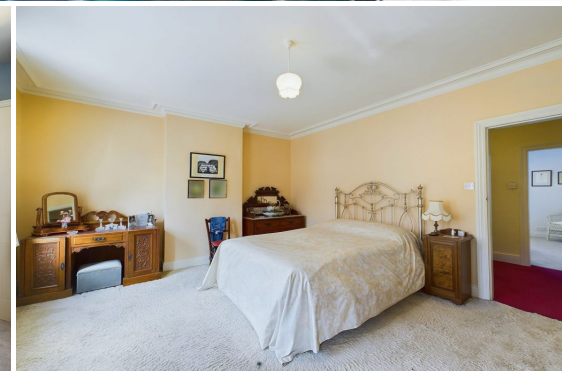
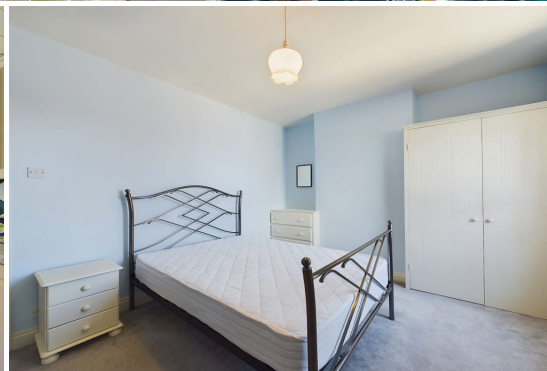




01947 601301



5 WELL CLOSE TERRACE, WHITBY

4 BED TOWN HOUSE



WWW.HOPEANDBRAIMESTATEAGENTS.CO.UK



PROPERTY FEATURES

- Victorian Terrace with Private Yard
- Period Features including High Ceilings & Fireplaces
- 2 Reception Rooms & Separate Kitchen
- 4 Double Bedrooms & House Bathroom
- Gas Central Heating & Double-Glazing Throughout
- Town Centre Location close to Cafes, Pubs & Shops

Type: TOWN HOUSE
Availability: FOR SALE
Bedrooms: 4
Bathrooms: 1
Reception Rooms: 2
Parking: ON ROAD PARKING
Outside Space: YARD
Tenure: FREEHOLD

01947 601301

www.hopeandbraimstateagents.co.uk



5 WELL CLOSE TERRACE, WHITBY - 4 bed Town House - £375,000



Hope & Braim are delighted to present 5 Well Close Terrace in Whitby to the market. This Victorian Terrace has the features you could want from a period home having well-proportioned rooms with high ceilings and fireplaces, all just a short stroll from the town's many attractions. The property is spacious with accommodation spread over three floors with a carved balustrade staircase and generous hall and landings. There are two reception rooms comprising a lounge at the front with a large bay window and a grand marble fireplace, whilst to the rear is the second reception room that is used as a sitting room that also has a fireplace. A rear extension houses the kitchen that has a range of painted pine cabinets with space for a gas range cooker and a door leading onto the private yard. On the first floor are two double bedrooms and the house bathroom that has a four-piece suite including a roll-top bath and a walk-in shower. On the top floor are two further double bedrooms both with dormer windows with the rear bedroom having views of Whitby's Abbey and a glimpse of the sea. There is also a large airing cupboard that could be easily converted into a second bathroom, if desired. As mentioned before there is a private yard at the rear of the property that is enclosed and has gated access so could store cycles and motorcycles with enough space for secure storage.



5 WELL CLOSE TERRACE, WHITBY - 4 bed Town House - £375,000



Approximate total area⁽¹⁾
1646.66 ft²



(1) Excluding balconies and terraces

While every attempt has been made to ensure accuracy, all measurements are approximate, not to scale. This floor plan is for illustrative purposes only.

GIRAFFE360



Disclaimer: This brochure and property details are a representation of the property offered for sale or rent, as a guide only. Brochure content must not be relied upon as fact and does not form any part of a contract. Measurements are approximate. No fixtures or fittings, heating system or appliances have been tested, nor are they warranted by Hope & Braim or any staff member in any way as being functional or regulation compliant. Hope & Braim do not accept any liability for any loss that may be caused directly or indirectly by the brochure content, all interested parties must rely on their own, their surveyor's or solicitor's findings. We advise all interested parties to check with the local planning office for details of any application or decisions that may be consequential to your decision to purchase or rent any property. Any floor plans provided should be used for illustrative purposes only and should be used as such by any interested party.