

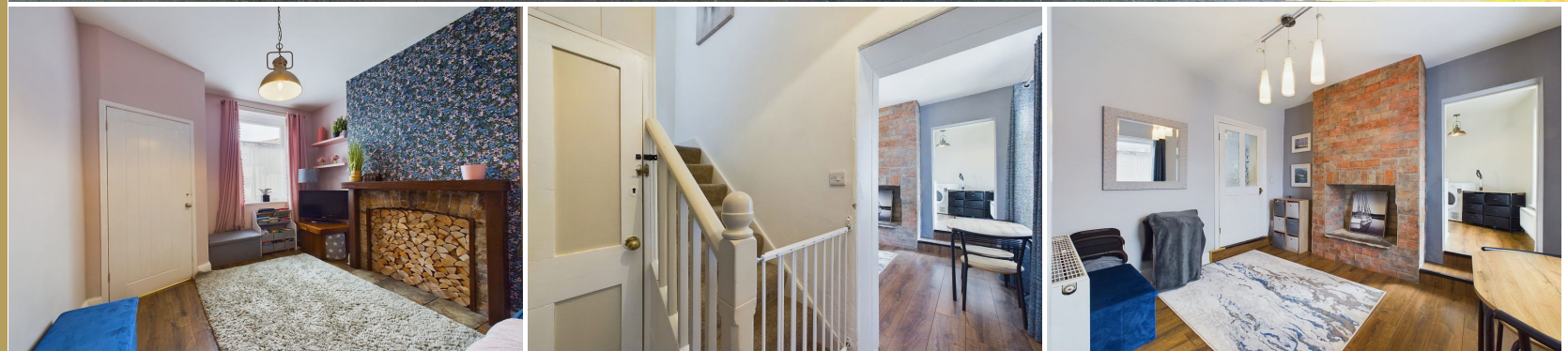


01947 601301



7 SPITAL BRIDGE, WHITBY

3 BED END OF TERRACE HOUSE



[WWW.HOPEANDBRAIMESTATEAGENTS.CO.UK](http://WWW.HOPEANDBRAIMESTATEAGENTS.CO.UK)



## PROPERTY FEATURES

- End of Terrace Cottage with Harbour Views
- 2 Reception Rooms with Fireplaces & Separate Kitchen
- 3 Double Bedrooms, Bathroom & Downstairs WC
- Gas Central Heating & Double-Glazing
- Enclosed Rear Yard with Outbuilding
- Within Walking Distance of the Town Centre
- Suitable as a Permanent Residence or a Holiday Home

Type: END OF TERRACE HOUSE

Availability: FOR SALE

Bedrooms: 3

Bathrooms: 1

Reception Rooms: 2

Outside Space: YARD

Tenure: FREEHOLD

01947 601301

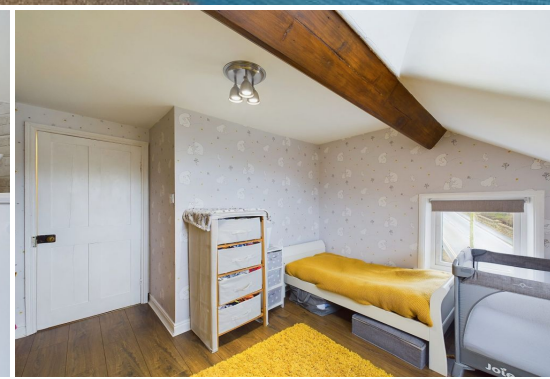
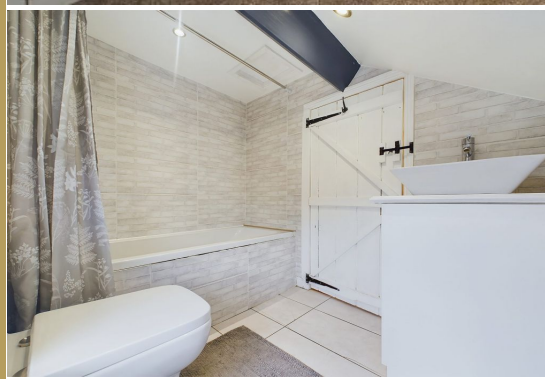
[www.hopeandbraimestateagents.co.uk](http://www.hopeandbraimestateagents.co.uk)



7 SPITAL BRIDGE, WHITBY - 3 bed End of Terrace House - £225,000

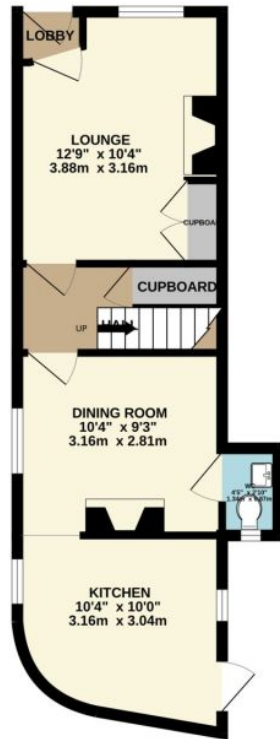


Hope & Braim are delighted to present 7 Spital Bridge in Whitby to the market. With its pretty blue façade and harbour views this end-of-terrace cottage is perfectly situated as it's just a short walk away from the bustling town centre. Step inside, and you'll be greeted by the timeless charm of this cottage. Two inviting reception rooms feature fireplaces, creating a warm and cozy atmosphere. The separate kitchen is well-equipped with fitted cabinets and integrated appliances and a back door leads out to the enclosed yard. Upstairs, three spacious double bedrooms ensure a peaceful night's sleep, and a well-appointed bathroom caters to your daily needs. Plus, a handy downstairs WC adds extra convenience to this delightful home. Enjoy year-round comfort with gas central heating and the practicality of double-glazed windows. Outside, an enclosed rear yard provides a private retreat, with an outbuilding offering versatile possibilities. Whether you're seeking a permanent residence or a holiday getaway, this cottage is your dream come true. Live the coastal lifestyle and savour those splendid harbour views. Embrace the town's amenities while knowing that your peaceful cottage retreat is just a stone's throw away.

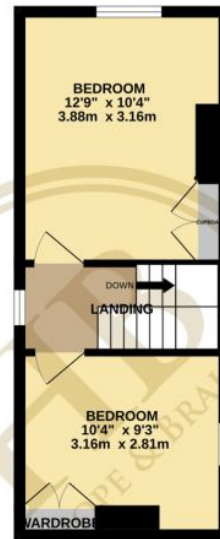


7 SPITAL BRIDGE, WHITBY - 3 bed End of Terrace House - £225,000

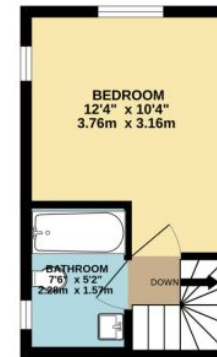
GROUND FLOOR  
364 sq.ft. (33.9 sq.m.) approx.



1ST FLOOR  
266 sq.ft. (24.7 sq.m.) approx.



2ND FLOOR  
178 sq.ft. (16.6 sq.m.) approx.



TOTAL FLOOR AREA : 808 sq.ft. (75.1 sq.m.) approx.

Whilst every attempt has been made to ensure the accuracy of the floorplans contained here, measurements of doors, windows, rooms and any other items are approximate and no responsibility is taken for any error, omission or mis-statement. This plan is for illustrative purposes only and should be used as such by any prospective purchaser. The services, systems and appliances shown have not been tested and no guarantee as to their operability or efficiency can be given.  
Made with Metropix ©2023



Energy Efficiency Rating		
	Current	Potential
Very energy efficient - lower running costs		
(92-100) <b>A</b>		84
(81-91) <b>B</b>		
(69-80) <b>C</b>		61
(55-68) <b>D</b>		
(39-54) <b>E</b>		61
(21-38) <b>F</b>		
(1-20) <b>G</b>		
Not energy efficient - higher running costs		
England, Scotland & Wales	EU Directive 2002/91/EC	



Disclaimer: This brochure and property details are a representation of the property offered for sale or rent, as a guide only.

Brochure content must not be relied upon as fact and does not form any part of a contract. Measurements are approximate.

No fixtures or fittings, heating system or appliances have been tested, nor are they warranted by Hope & Braim or any staff member in any way as being functional or regulation compliant.

Hope & Braim do not accept any liability for any loss that may be caused directly or indirectly by the brochure content, all interested parties must rely on their own, their surveyor's or solicitor's findings.

We advise all interested parties to check with the local planning office for details of any application or decisions that may be consequential to your decision to purchase or rent any property.

Any floor plans provided should be used for illustrative purposes only and should be used as such by any interested party.