



Ty Arth St. David's Lane, Blackwood NP12 0PJ

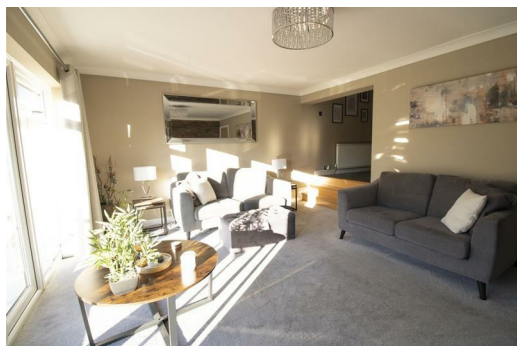
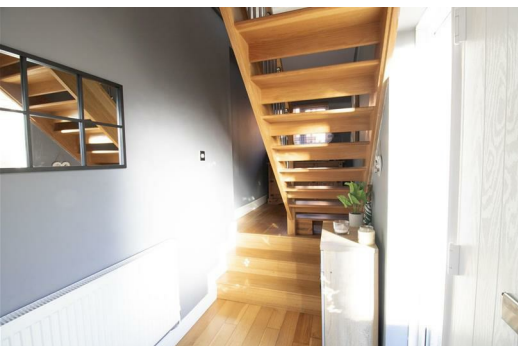
Offers over £300,000

****IMMACULATE MODERN FIVE BEDROOM DETACHED HOUSE** MUST BE VIEWED****

Nestled in the charming area of Woodfieldside, Blackwood, this extremely well presented house offers a perfect blend of comfort and style. With four/five spacious bedrooms, this property is ideal for families seeking a welcoming home with plenty of versatile space. The two well-appointed bathrooms ensure convenience for all residents, making morning routines a breeze. The heart of the home features an inviting lounge with French doors leading to balcony, well positioned to take advantage of the fantastic views, modern fitted kitchen/dining room with integrated appliances perfect for relaxation and entertaining guests. Whether you prefer a cosy evening in or hosting lively gatherings, these versatile areas cater to your every need.

Outside, the property boasts parking for two vehicles, a valuable asset in today's busy world, the enclosed rear garden boasts a fantastic decked balcony to drink in the beautiful views of the surrounding area. The surrounding neighbourhood is known for its lovely walks, friendly atmosphere and community spirit, making it an excellent choice for those looking to settle down in a peaceful yet vibrant location. This house in Woodfieldside is not just a place to live; it is a place to create lasting memories. With its generous living space and convenient amenities, it presents an exceptional opportunity for anyone looking to embrace a comfortable lifestyle in Blackwood, close to the town centre, local amenities, schools and excellent road/rail links to Cardiff, Newport and M4 corridor.

Don't miss the chance to make this lovely property your new home.



Entrance Hall

4'7" x 17'2" (1.4 x 5.25)

Composite door with glass side panel, UPVC double glazed window, plaster walls and ceiling, radiator, power points, solid oak and chrome staircase, wood flooring.

Lounge

12'5" x 17'1" (3.8 x 5.23)

UPVC French doors with side panels to balcony, plaster walls and ceiling, decorative feature wall, radiator, power points, carpet to flooring.

Kitchen /Dining Room

11'9" x 15'8" (3.59 x 4.8)

UPVC double glazed door to rear with glass panel, UPVC double glazed window to rear aspect, modern high gloss fitted kitchen with matching floor/wall units, under counter lighting. breakfast bar, integrated fridge/freezer and dish washer, built in electric oven with 4 ring gas hob and extractor fan, stainless steel bowl and a half drainer sink with mixer tap, plaster walls and ceiling, tiles to splash back, radiator, power points, ceramic tiles to flooring.

Lower Ground Floor Hallway

4'3" x 12'8" (1.3 x 3.87)

Plaster walls and ceiling, carpeted stairs, under stairs storage space.

Master Bedroom

8'10" x 15'1" (2.7 x 4.6)

UPVC double glazed French doors and windows to front, built in wardrobes with glass sliding doors and double doors to utility space with plumbing for automatic washing machine, storage cupboard, plaster walls and ceiling, radiator, power points, carpeted.

Shower Room

4'4" x 7'10" (1.34 x 2.39)

Three piece suite comprising of walk in shower with glass shower screen and rain shower, built in low level WC with sink in vanity unit with storage, PVC panelling to walls and ceiling, extractor fan, chrome heated towel rail.

First Floor Landing

7'6" x 10'7" (2.3 x 3.24)

Plaster walls and ceiling, carpeted.

Bedroom 2

7'2" x 12'9" (2.2 x 3.9)

UPVC double glazed window to front, plaster walls and ceiling, radiator, power points, carpeted.

Bedroom 3

8'10" x 9'2" (2.7 x 2.81)

UPVC double glazed window to front, plaster walls and ceiling, radiator, power points, carpeted.

Bedroom 4

7'6" x 9'6" (2.29 x 2.9)

UPVC double glazed window to rear, plaster walls and ceiling, radiator, power points, carpeted.

Bedroom 5/Dressing Room/Office

6'11" x 7'6" (2.11 x 2.29)

UPVC double glazed French doors to Juliet balcony, plaster walls and ceiling, radiator, power points, carpeted, built in wardrobes,.

Bathroom

8'2" x 9'5" (2.51 x 2.88)

2 x UPVC double glazed windows to side, modern four piece bathroom suite comprising of freestanding bath, pedestal wash hand basin, low level WC and separate walk in shower cubicle., plaster ceiling with inset spotlights, tile finish to walls and flooring, modern chrome radiator.

External

To the front: Off road parking for up-to two vehicles, Steps leading to side access to entrance/rear of the property with decking area and enclosed tiered rear garden with built in planters, lovely decked and glass balcony.

