



## 1 Wood View, Crumlin Newbridge NP11 3AR

**£144,950**

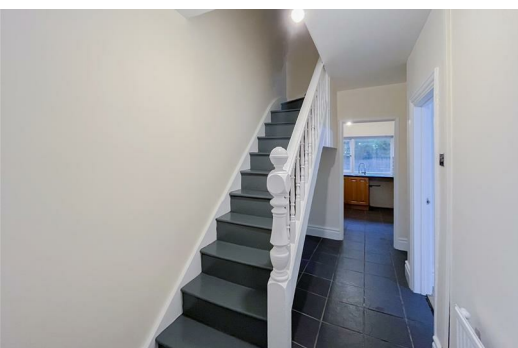
**\*\*EXCELLENT FIRST TIME BUY\*\***

Welcome to Wood View situated in a lovely sought after location on the edge of Treowen - a charming end terrace house that is sure to capture your heart! This delightful property boasts large lounge/dining room, perfect for entertaining guests or simply relaxing with your loved ones. With three bedrooms, there's plenty of space for the whole family to make this house a home.

Situated in a peaceful neighbourhood, this property offers a retreat from the hustle and bustle of everyday life.

Whether you're looking to settle down in a quaint location or seeking a new investment opportunity, this end terrace house has the potential. Don't miss out on the chance to make Wood View your new address - a place where memories are made and dreams come true.

TENURE: We are advised Freehold  
EPC: D  
COUNCIL TAX BAND: B



### Entrance Hall

14'7" x 5'10" (4.45 x 1.80)

Double glazed entrance door, plaster walls and ceiling, tiled floor, stairs to first floor.

### Kitchen

8'5" x 6'3" (2.58 x 1.92)

UPVC double glazed window to rear, fitted base and wall units, works surface over, plaster walls and ceiling, radiator, power points, tiled floor, splash back tiling.

### Lounge/Dining Room

24'5" x 13'2" (widest point) (7.45 x 4.02 (widest point))

UPVC double glazed window to front and rear, plaster walls and ceiling, laminate flooring, radiator, power points.

### Rear Lobby

3'4" x 5'0" (1.03 x 1.54)

UPVC double glazed door to rear,

### Bathroom

5'0" x 5'0" (1.54 x 1.54)

Wet room, shower, low level wc, sink, tiled around.

### Landing

### Bedroom One

11'1" x 18'8" (3.40 x 5.69)

UPVC double glazed windows to front, plaster walls and ceiling, radiator, power points, wood floor.

### Bedroom Two

12'11" x 11'2" (3.96 x 3.42)

UPVC double glazed window, plaster walls and ceiling, radiator, power points, gas central heating boiler, carpeted.

### Bedroom Three

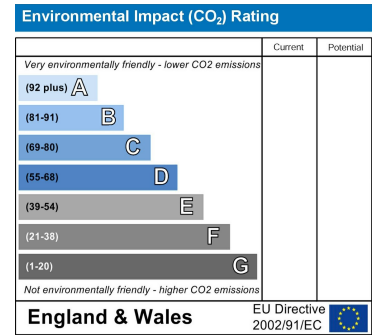
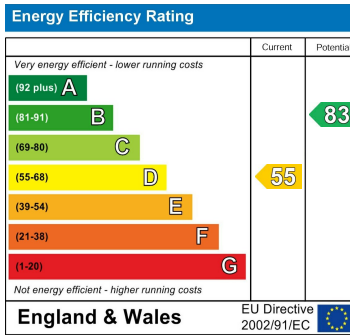
9'6" x 7'7" (2.91 x 2.32)

UPVC double glazed window, plaster walls and ceiling, radiator, power points, wood floor.

### External

To the front: Steps leading to front forecourt

To the rear: Large rear courtyard area side access, tiered garden



Authorised and Regulated by the Financial Conduct Authority in Respect of Insurance Mediation Only. William Parkman & Daughters Ltd Registered in England & Wales No. 5401197. Registered Office: as above.