



Fistral House, Esplanade Road, Newquay - FISTRAL BEACHSIDE!

Offers In Region Of £625,000

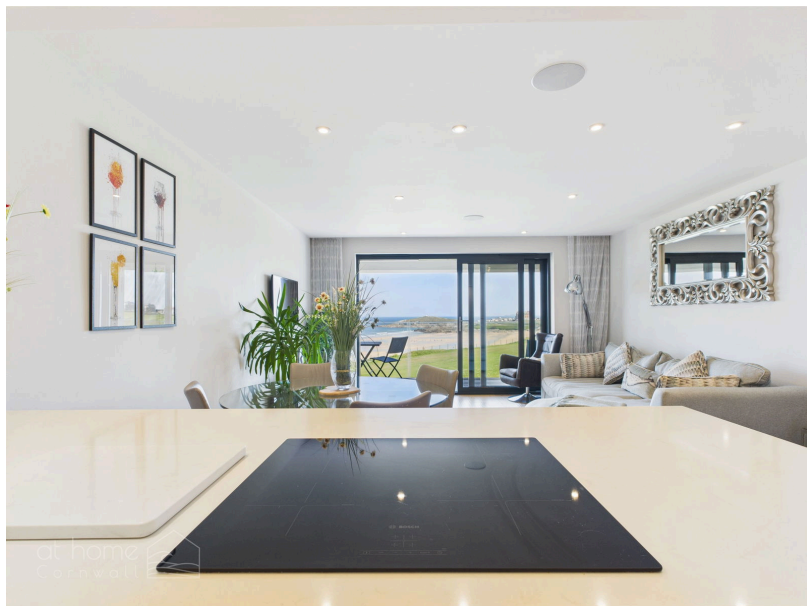
🛏 2 🚿 2 🛋 1

- Stunning second-floor, two-bedroom luxury BEACHSIDE apartment
- Contemporary coastal living at its finest
- NO ONWARD CHAIN
- Private gated parking
- Secure entry systems, ensuring both convenience and peace of mind.
- Panoramic views over the world-renowned Fistral Beach and Newquay Golf Course
- Floor-to-ceiling windows and sliding doors open onto a private balcony
- NHBC 10 Year Warranty
- A communal surf shower
- Underfloor heating, Sonos ceiling-mounted speakers, luxury tiles, unique feature lighting.



Stunning second-floor, two-bedroom luxury BEACHSIDE apartment - AVAILABLE WITH NO ONWARD CHAIN | Panoramic views over the world-renowned Fistral Beach, Newquay Golf Course and The Headland Hotel | Contemporary coastal living at its finest | Floor-to-ceiling windows and sliding doors open onto a private balcony, inviting the outdoors in and providing the perfect setting to relax and soak in the sea breeze | Master En-Suite | Underfloor heating, Sonos ceiling-mounted speakers, luxury tiles from Mandarin Stone, and unique feature lighting | Private gated parking | A communal surf shower | Secure entry systems, ensuring both convenience and peace of mind | NHBC 10 year warranty | SHARE OF FREEHOLD |

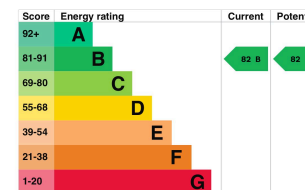




Energy rating and score

This property's energy rating is B. It has the potential to be B.

[See how to improve this property's energy efficiency.](#)



The graph shows this property's current and potential energy rating.

Properties get a rating from A (best) to G (worst) and a score. The better the rating and score, the lower your energy bills are likely to be.

For properties in England and Wales:

- the average energy rating is D
- the average energy score is 60

01872 571 119
info@athomecornwall.co.uk

At Home Cornwall Ltd Company Reg: 12746530

athomecornwall.co.uk

Agents Note: Whilst every care has been taken to prepare these sales particulars, they are for guidance purposes only. All measurements are approximate are for general guidance purposes only and whilst every care has been taken to ensure their accuracy, they should not be relied upon and potential buyers are advised to recheck the measurements