



Treseders Gardens, Moresk, Truro, TR1

Offers In Region Of £895,000

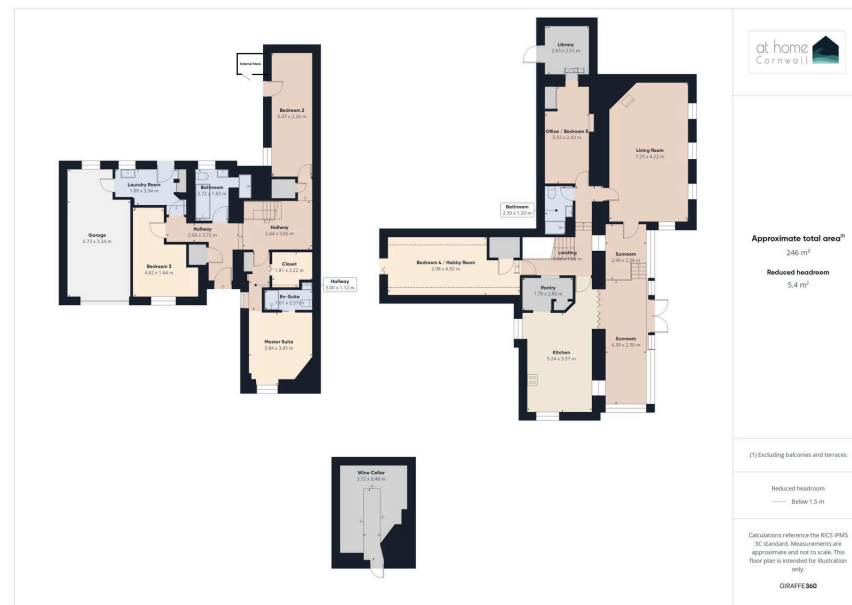
🛏 5 🍷 3 🛋 2

- Elegant 4/5-bedroom detached residence in the heart of Truro
- Two-tiered sunroom & alfresco dining terrace – perfect for entertaining
- Elegant lounge with modern log burner and full garden views
- Well-equipped utility room with ample storage and garage access, Wine Cellar!
- Versatile home office, library & guest rooms – ideal for remote work, guests, or hobbies
- Stunning family bathroom with freestanding bath and separate walk-in shower
- Open-plan Shaker-style kitchen with Belfast sink, island, and walk-in pantry
- Meticulously maintained wrap-around gardens with rare historic plantings
- Sweeping driveway, integral garage with electric door and vast off-road parkin
- Tranquil yet central location in the heart of Truro, near top schools, shops, and both coasts



Daubuz Lodge – An Elegant 4/5-Bedroom Detached Residence with Wrap-Around Gardens in the Heart of Truro | 4/5
Generously Sized Bedrooms including a luxurious master with walk-in wardrobe and en-suite | Stunning Family Bathroom with freestanding bath and separate walk-in shower | Open-Plan Shaker-Style Kitchen with Belfast sink, island, and walk-in pantry | Two-Tiered Sunroom & Alfresco Dining Terrace – perfect for entertaining | Elegant Lounge with Modern Log Burner and full garden views | Meticulously Maintained Wrap-Around Gardens with rare plantings from the historic Treseder Nursery | Well-Equipped Utility Room with ample storage and garage access | Sweeping Driveway & Integral Garage with electric door and off-road parking | Versatile Home Office, Library & Guest Rooms – ideal for remote work, guests, or hobbies | Tranquil Yet Central Location in the heart of Truro, near top schools, shops, and both coasts | Separate under house wine cellar |

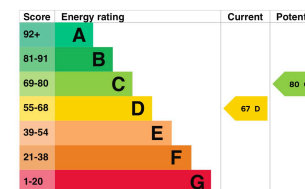




Energy rating and score

This property's energy rating is D. It has the potential to be C.

[See how to improve this property's energy efficiency.](#)



The graph shows this property's current and potential energy rating.

Properties get a rating from A (best) to G (worst) and a score. The better the rating and score, the lower your energy bills are likely to be.

For properties in England and Wales:

- the average energy rating is D
- the average energy score is 60

01872 571 119
info@athomecornwall.co.uk

At Home Cornwall Ltd Company Reg: 12746530

athomecornwall.co.uk

Agents Note: Whilst every care has been taken to prepare these sales particulars, they are for guidance purposes only. All measurements are approximate are for general guidance purposes only and whilst every care has been taken to ensure their accuracy, they should not be relied upon and potential buyers are advised to recheck the measurements