



Newham, Truro, TR1 - Riverside

Offers In Region Of £549,950

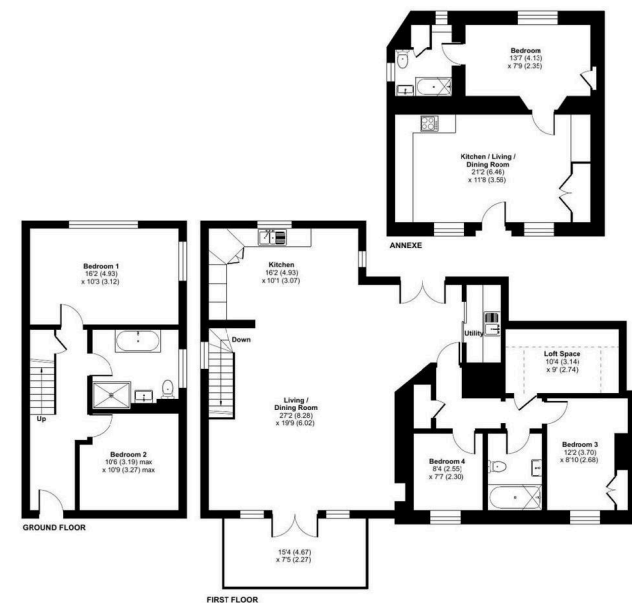
🛏 5 🍳 3 🛋 2

- Exceptional 4 Bedroom Riverside Retreat - 1 bedroom self-contained annexe
- Panoramic Cityscape, Cathedral and River Views
- Gated, off-road, driveway parking
- Just a short stroll from the heart of Truro
- Ground floor and first floor family sized contemporary bathrooms
- Impressive Open plan Lounge/Kitchen/Diner
- Beautiful Self Contained 1 Bed Annexe
- Balcony - Alfresco dining area with Cathedral, cityscape and river views!
- Separate utility area
- Beautifully renovated and impeccably presented throughout, this home offers a seamless blend of charm, space, and sophistication.



Exceptional 4 Bedroom Riverside Retreat with 1 bedroom self-contained annexe | Impressive Open plan Lounge/Kitchen/Diner | Panoramic Cityscape, Cathedral and River Views | Beautiful Self Contained 1 Bed Annexe | Gated, off-road, driveway parking | Balcony - Alfresco dining area with Cathedral, cityscape and river views! | Just a short stroll from the heart of Truro | Separate utility area | Ground floor and first floor family sized contemporary bathrooms | Beautifully renovated and impeccably presented throughout, this home offers a seamless blend of charm, space, and sophistication |

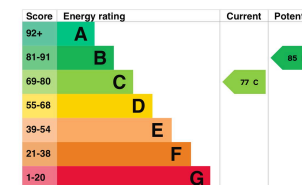




Energy rating and score

This property's energy rating is C. It has the potential to be B.

[See how to improve this property's energy efficiency.](#)



The graph shows this property's current and potential energy rating.

Properties get a rating from A (best) to G (worst) and a score. The better the rating and score, the lower your energy bills are likely to be.

For properties in England and Wales:

- the average energy rating is D
- the average energy score is 60

01872 571 119
info@athomecornwall.co.uk

At Home Cornwall Ltd Company Reg: 12746530

athomecornwall.co.uk

Agents Note: Whilst every care has been taken to prepare these sales particulars, they are for guidance purposes only. All measurements are approximate are for general guidance purposes only and whilst every care has been taken to ensure their accuracy, they should not be relied upon and potential buyers are advised to recheck the measurements