

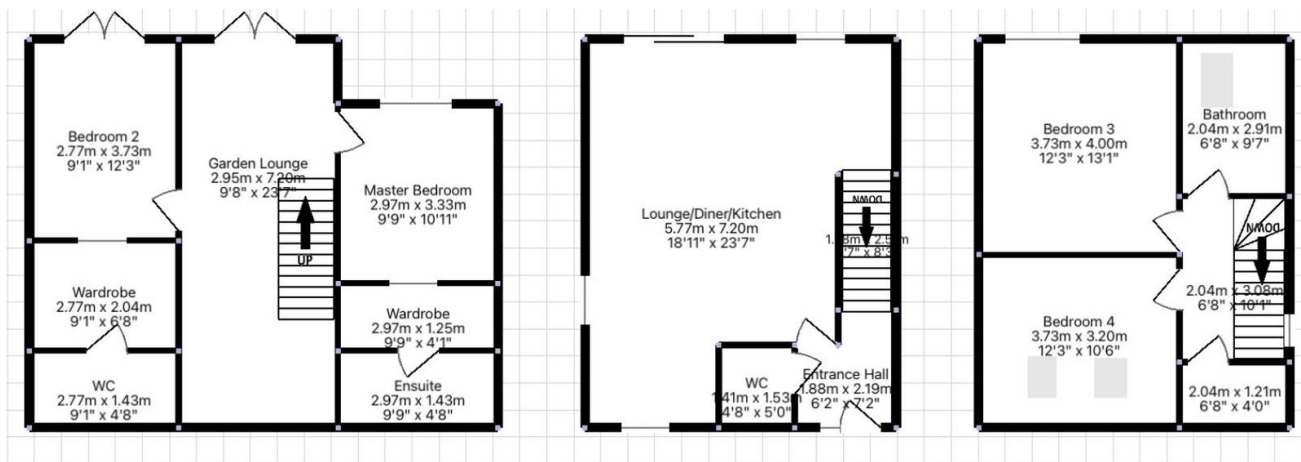
Bethan View, Perranporth, TR6 - Coastal, Stunning Valley Views!

Offers In Region Of £559,000

4 3 2



- Impressive, landscaped, garden is a true highlight - an oasis of calm!
- Stunning open plan kitchen/diner (perfectly balanced for modern family life)
- Off-road brick driveway parking for three cars
- Far reaching valley views
- NO CHAIN
- Air Source Heating - Underfloor
- Fantastic, versatile living spaces - 142 sqm!
- Walking distance to the centre of Perranporth the incredible beach and local amenities
- 2 x incredible SUITE BEDROOMS with walk in wardrobes, en suites and stunning valley views
- Detached, 4-bedroom COASTAL family home



Contemporary, stunning, detached, 4-bedroom family home | Coastal | 2 incredible suite bedrooms with walk in wardrobes, en suites and stunning valley views! | Walking distance to the centre of Perranporth | NO CHAIN | Stunning open plan kitchen/diner (perfectly balanced for modern family life) | Fantastic, versatile living spaces | Off road brick driveway parking for three cars! | Air Source Heating | Deceptively spacious | Landscaped, terraced garden is a true highlight: stylish alfresco patio area—perfect for outdoor dining—with a handy storage shed and steps leading to the driveway. The sun-soaked patio leads down to a level lawn, framed by lush



shrub borders, tropical palms, and ornamental grasses, leading to a decked sun terrace and secret garden!