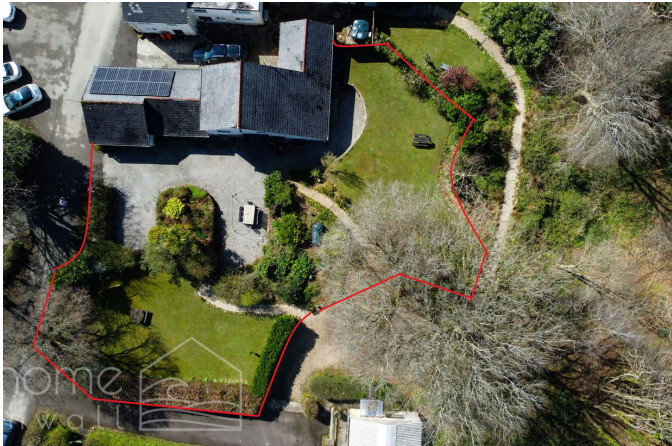


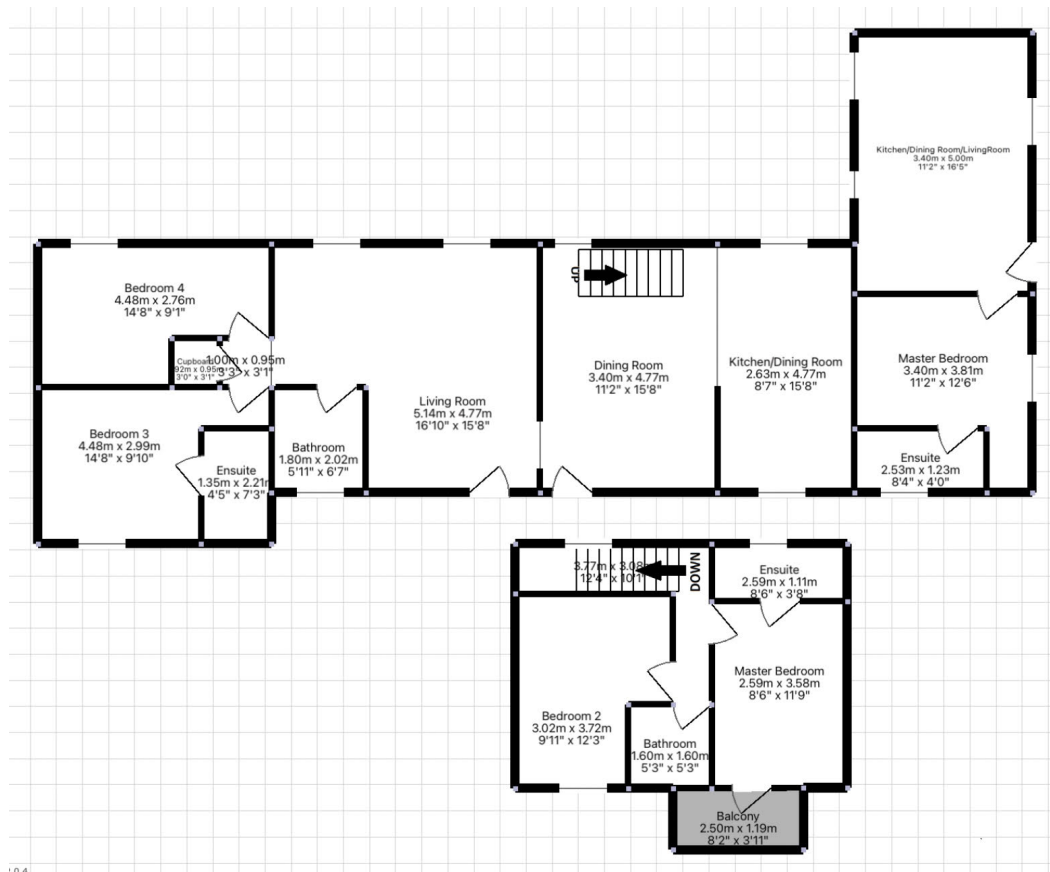
Mount, Bodmin, PL30 - Direct Access to woodland and Bodmin Moor

Offers In Region Of £599,000

 4  4  2



- Idyllic and charming four-bedroom detached home set amongst stunning, mature, gardens and grounds.
- Extremely private position
- Master Suite with balcony and en-suite shower room
- Direct access to woodland walks and open moor beyond
- Versatile living accommodation - Perfect for multigenerational families
- 1-bedroom self-contained annexe with own private west facing garden.
- Four shower rooms (2 En-Suite)
- Off-road driveway gated parking for numerous vehicles
- Separate dual aspect lounge with garden views
- Idyllic settings for alfresco dining and summer gatherings.



An idyllic and charming four-bedroom detached home set amidst stunning, mature gardens and grounds | One-bedroom self-contained annexe with its own drive, parking, and private west-facing garden | Extremely private position | Four shower rooms (two en-suite) | Master suite with balcony and en-suite shower room | Off-road driveway with gated parking for numerous vehicles | Direct access to woodland walks and open moor beyond | Separate dual aspect lounge with



garden views | Versatile living accommodation, perfect for multigenerational families | Idyllic settings for alfresco dining and summer gatherings |