

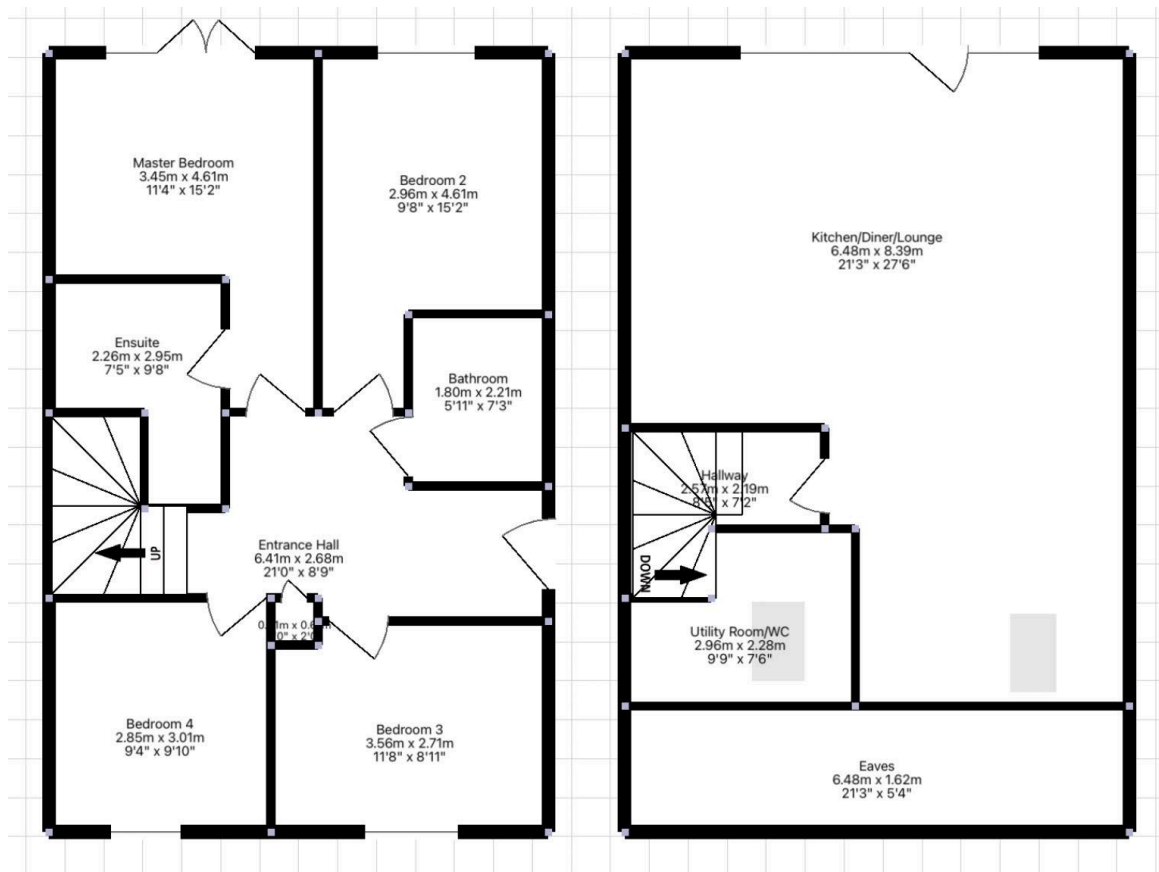
Somerville Road, Perranporth, TR6 - PANORAMIC SEA VIEWS

Offers In Region Of £625,000

4 2 1



- Contemporary, stunning, semi-detached, 4-bedroom family home.
- Far reaching views over Perranporth and the beach from the floor to ceiling gable end windows and balcony
- Full width balcony perfect for watching the sunset and checking the surf!
- Stunning open plan kitchen/diner (perfectly balanced for modern family life)
- Enclosed, level, low maintenance garden.
- Coastal
- Centre of Perranporth – 5-minute walk to Perranporth beach and local amenities
- Deceptively spacious - 360 TOUR AVAILABLE – CLICK THE LINK!
- Off road parking for three cars
- Master En-suite with sea views and access onto the garden.



Contemporary, stunning, immaculately presented semi-detached, 4-bedroom family home | Coastal | Far reaching views over Perranporth and the beach from the floor to ceiling gable end windows and balcony | Centre of Perranporth – 5-minute walk to Perranporth beach and local amenities | Full width balcony perfect for watching the sunset and checking the surf | Deceptively spacious - 360 TOUR AVAILABLE – CLICK THE LINK | Stunning open plan kitchen/diner (perfectly balanced for modern family life) | Off road parking for three cars | Separate utility/w/c |



Enclosed, level, low maintenance garden | Fantastic living space | Master En-suite with sea views and access onto the garden.