

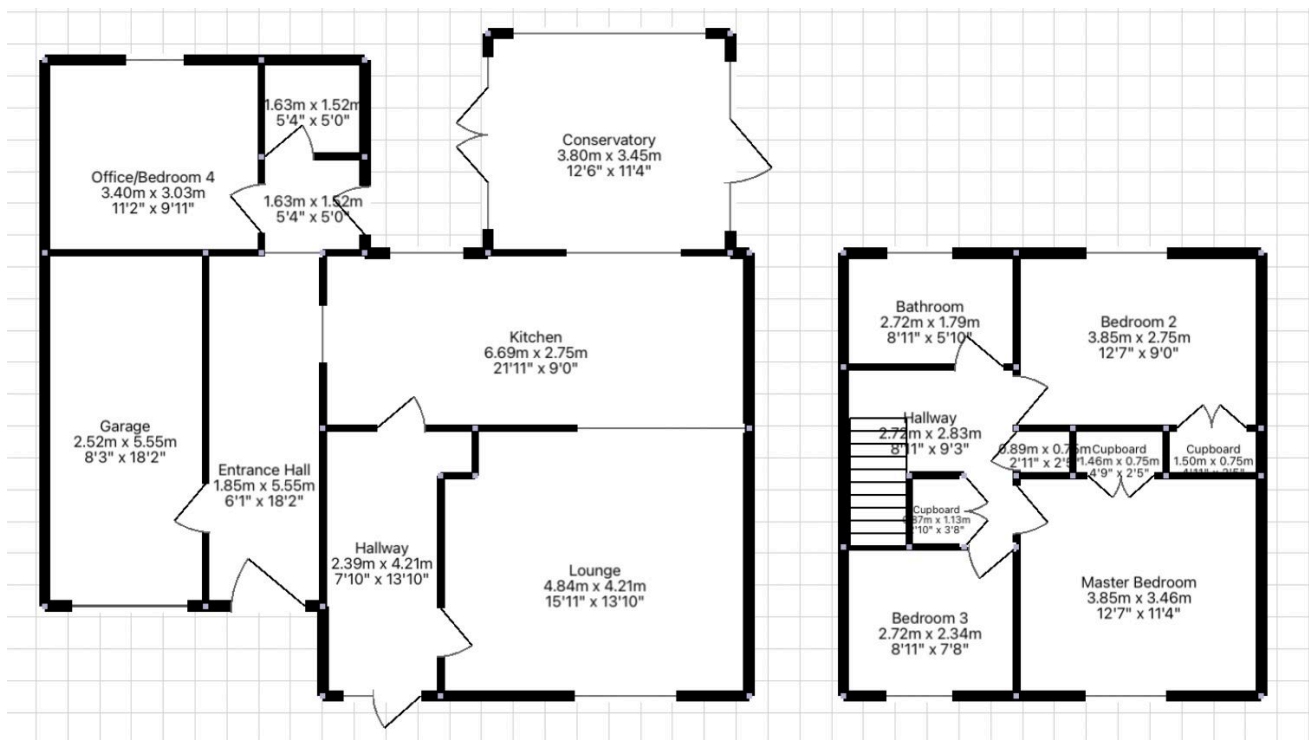
## Bosvean Gardens, Truro

Offers In Region Of £549,950

🛏 4 🚿 2 🛋 2



- Immaculate, executive detached family home with four generously sized bedrooms
- Integrated garage & driveway off-road parking for multiple vehicles
- Highly Sought after quiet location - and yet is within easy walking distance to the city centre/train station.
- Landscaped garden is a private oasis – with sun terraces, level lawn, a decked area with a glass-fronted fish tank feature
- Remodelled and renovated to an exceptional standard
- Stylish open-plan living area perfect for entertaining
- Immaculately Presented throughout
- 360 Tour - [CLICK THE LINK!](#)
- Beautiful wooden shutters installed in lounge and all 4 bedrooms
- Doors open directly onto the rear garden, seamlessly blending indoor and outdoor living setting the stage for seamless living and entertaining



Immaculately presented, executive detached home offers four generously sized bedrooms | Remodelled to an exceptional standard throughout | Stylish open-plan living area is perfect for entertaining | Beautifully landscaped private garden with sun terraces, a level lawn, decked area and a unique glass-fronted fish tank feature | Integrated garage | Ample off-road parking add modern convenience | Highly sought-after, peaceful area, yet just a short walk to the city centre, train station and Sainsbury's | Elegant wooden shutters dress the lounge and all bedrooms, while



the indoor-outdoor flow creates a stunning setting for both everyday living and entertaining. This home perfectly blends luxury, comfort and practicality in an unbeatable location | 360 Tour - [CLICK THE LINK!](#)