

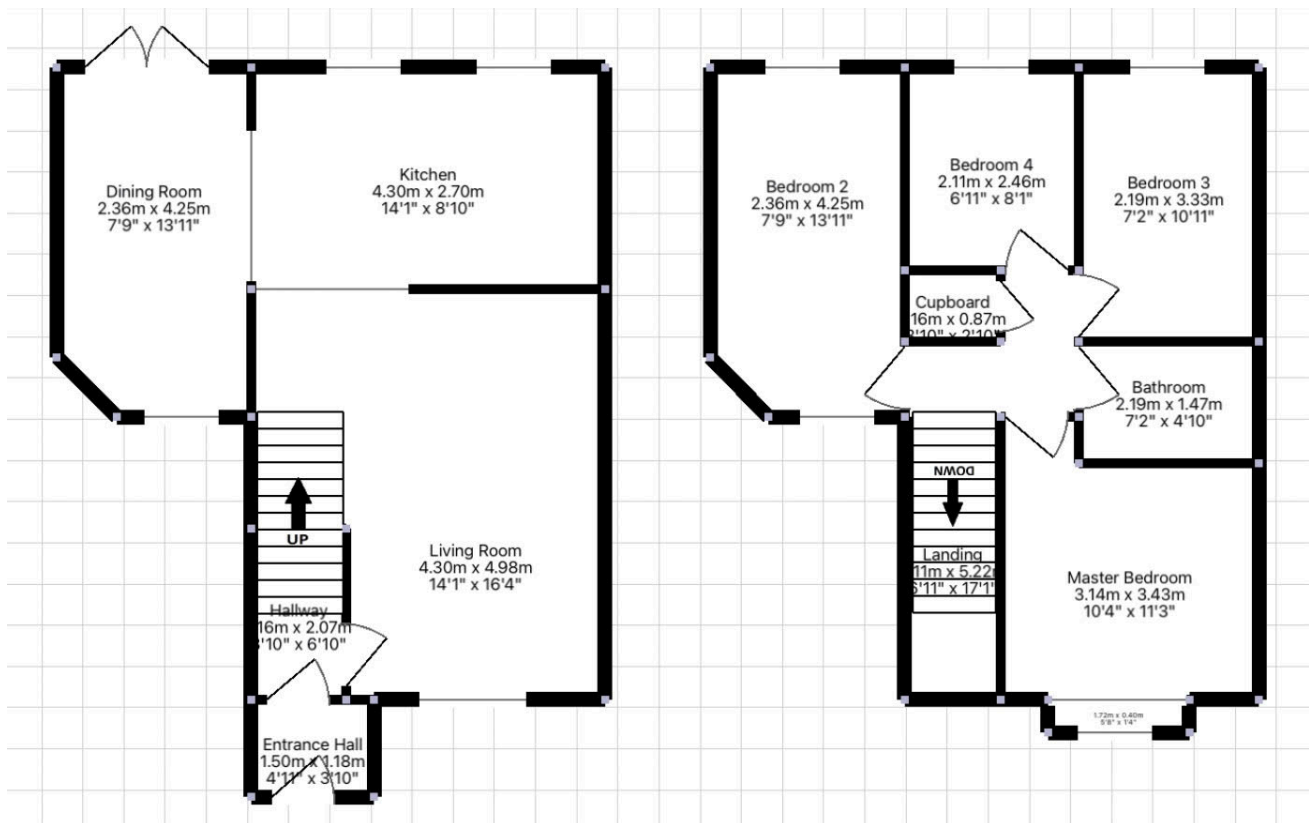
Miners Court, Perranporth - Central Perranporth!

Offers In Region Of £395,000

4 1 1



- Contemporary, stunning, semi-detached, 4-bedroom family home.
- Prime central location in Perranporth
- Deceptively spacious
- Off road, driveway parking
- Extended dining room with garden access
- Coastal
- 2-minute walk to Perranporth beach and local amenities
- Quiet cul-de-sac setting
- Backing onto park/playing field
- Perfect for permanent residence, long-term rental, or holiday let.



Contemporary, stunning, semi-detached, 4-bedroom family home | Coastal | Prime central location in Perranporth | 2-minute walk to Perranporth beach and local amenities | Deceptively spacious | Quiet cul-de-sac setting | Off road, driveway parking | Backing onto park/playing field | Extended dining room with garden access | Perfect for permanent residence, long-term rental, or holiday let |