

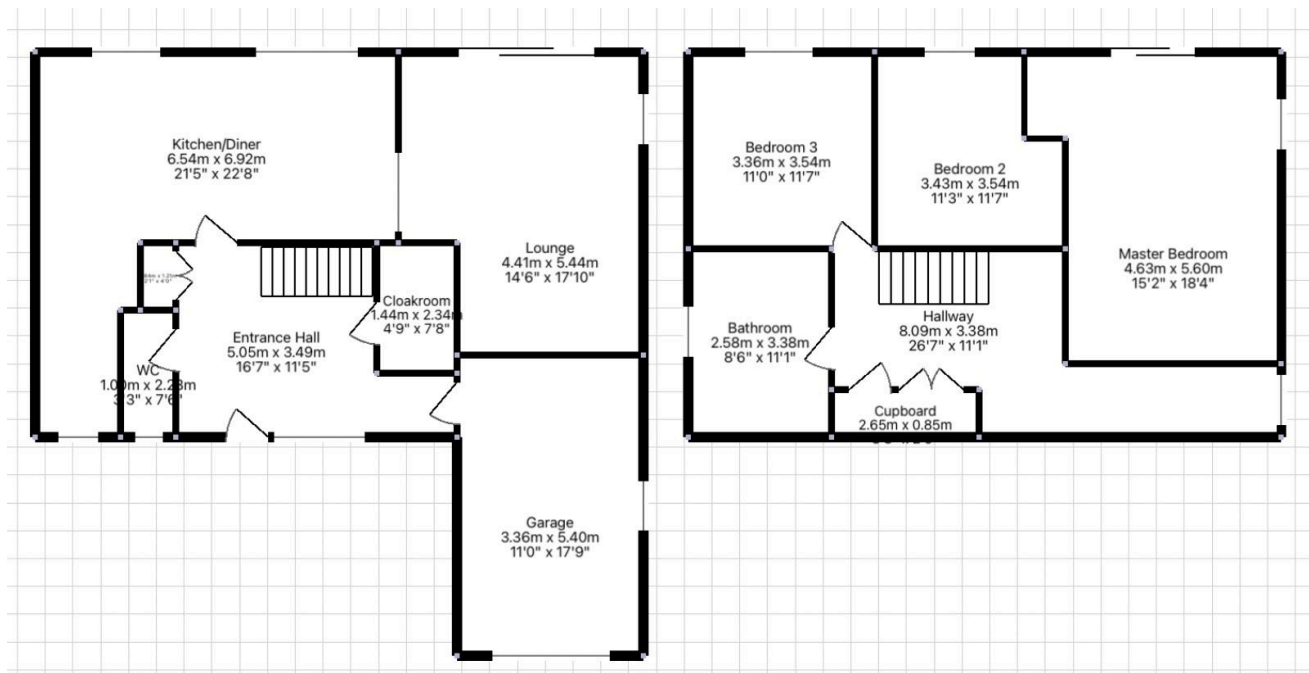
10 Linden Crescent

Offers In Region Of £549,000

🛏 5 🚿 3 🛋 2



- Luxurious, impressive, three storey, 5 bedroom detached family home
- Over 2207 square foot over three floors!
- Impressive open plan lounge, kitchen, diner (perfectly balanced for modern family life)
- Central Newquay location – walking distance to local beaches and all local amenities
- Solar Panels - 2.5k per year earned from feed in tariff till 2032.
- Versatile accommodation with lower ground floor perfectly suited for multigenerational living, guest accommodation, or as a self-contained annexe.
- Stunning, far reaching, panoramic views over the Boating Lake, Newquay and beyond!
- 2 balconies with panoramic views perfect for alfresco dining and breakfast on the terrace!
- Beautifully landscaped rear garden. The outdoor space includes a stunning alfresco dining patio, tiered lawns with shrub borders, and a lower-level sun terrace ideal for enjoying the serene surround



LUXURIOUS and IMPRESSIVE three-storey, FIVE-bedroom DETACHED family home featuring five large double bedrooms, spanning over 2,207 square feet across three floors. Versatile accommodation with a lower ground floor perfectly suited for multigenerational living, guest accommodation, or as a self-contained annexe. Beautifully landscaped rear garden. The outdoor space includes a stunning alfresco dining patio, tiered lawns shrub borders, and a lower-level sun terrace ideal for enjoying the serene surroundings. Impressive open-plan lounge, kitchen and diner, perfectly balanced for modern family life. Stunning, far-reaching, panoramic views over the



Boating Lake, Newquay, and beyond. Central location within walking distance to local beaches and all local amenities. Two balconies with panoramic views perfect for alfresco dining and breakfast on the terrace. Fantastic living space with allocated off-road driveway parking and a single garage. 360 TOUR - [CLICK THE LINK!](#)