

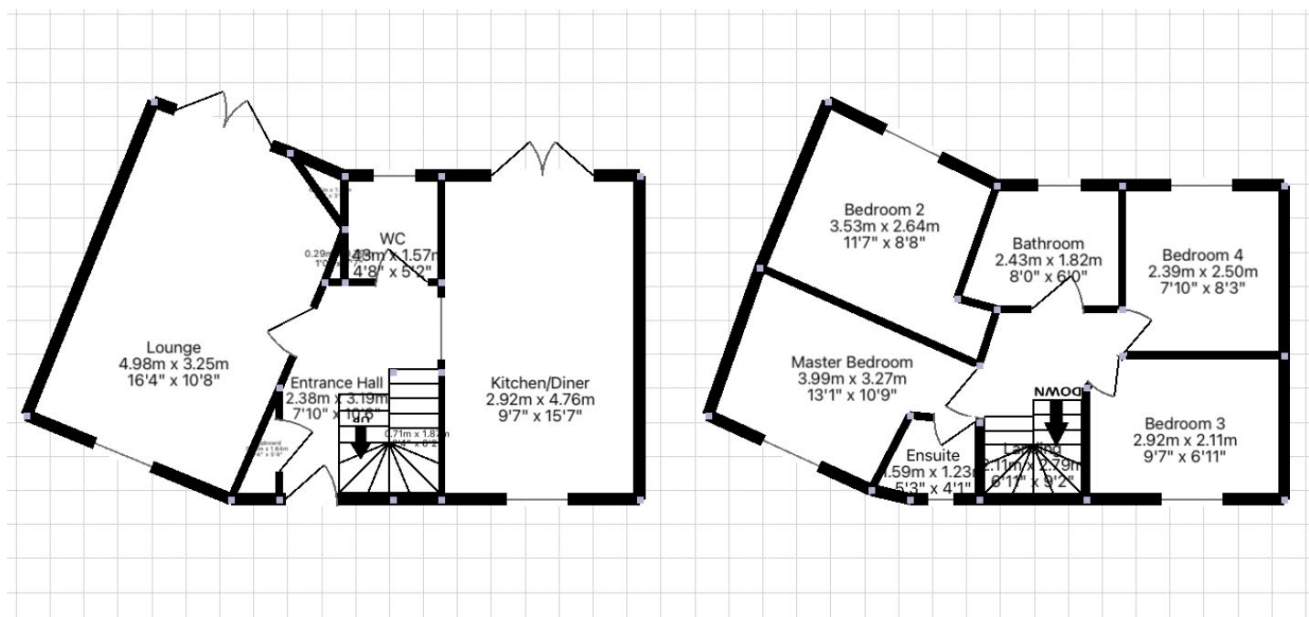
## Fetling Lane. Off Charlestown Road, Charlestown

£349,000

🛏 4 🚿 3 🛋 1



- Pristine and impressive 4-bedroom, semi-detached family home
- MODERN LUXURY, elevated highly sought after development, Above the ICONIC Charlestown Harbour and cove beaches!
- Enclosed, level, courtyard garden with alfresco dining area perfect for a glass of something in the afternoon sun!
- Front and rear gardens
- Master En-Suite shower room
- COASTAL FAMILY HOME
- Minutes' walk to the village amenities, stunning harbour and beaches
- Private Parking & Garage: Allocated driveway parking at the rear and a single garage for convenience.
- Immaculately presented throughout



Pristine and impressive 4-bedroom, semi-detached family home. Coastal family home featuring modern luxury in an elevated, highly sought-after development above the iconic Charlestown Harbour and cove beaches. Just minutes' walk to the village amenities, stunning harbour, and beaches. Beautifully maintained enclosed, level, courtyard garden with alfresco dining area perfect for enjoying a glass of something in the midday sun. Private parking and garage with



allocated driveway parking at the and a single garage for convenience. Front and rear garden. Immaculately presented. Master en-suite. Incredible contemporary, sleek kitchen/diner.