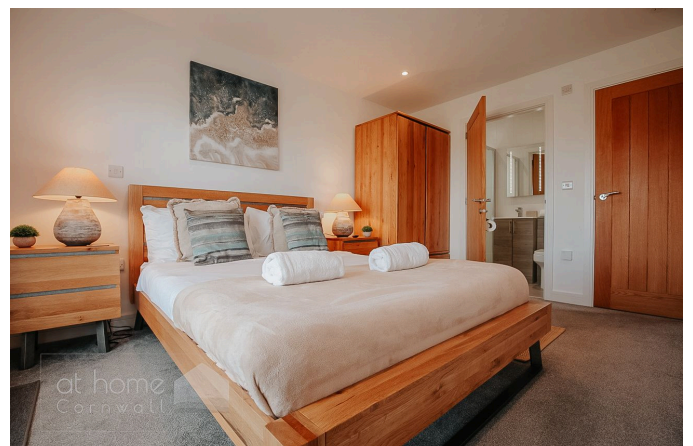


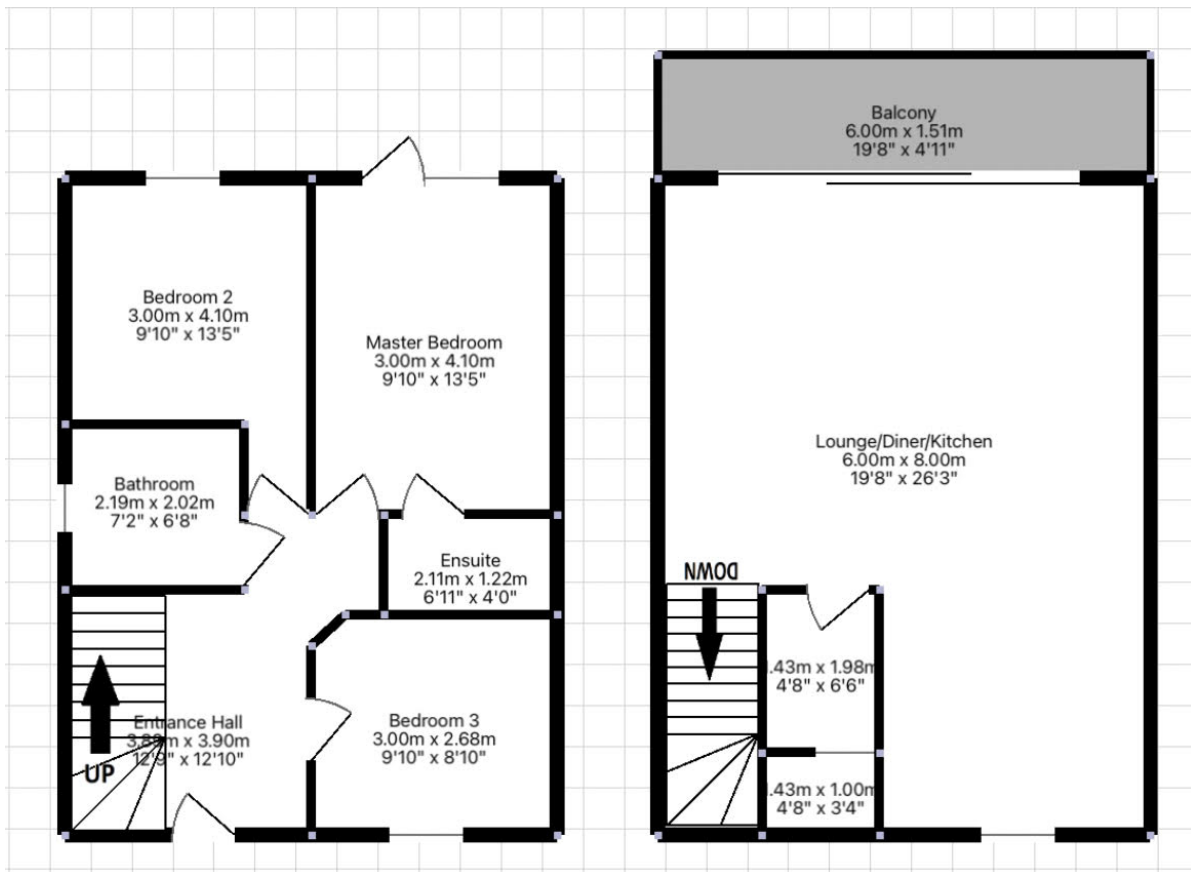
Gwythian Way, Perranporth (Access straight out to coast path, INCREDIBLE VIEWS!)

Offers In Region Of £595,000

3 3 1



- Contemporary, stunning, immaculately presented throughout detached, 3-bedroom family home.
- Breathtaking views of the coastal path, Perranporth and beach from the immense sliding doors and full width balcony!
- Solar Panel Hot Water
- Coastal
- 5-minute walk to Perranporth beach and local amenities
- Deceptively spacious - 360 TOUR AVAILABLE – CLICK THE LINK!
- Stunning open plan lounge/kitchen/diner (perfectly balanced for modern family life)
- Handy outdoor beach wash station, perfect after a day on the sand
- Off road driveway parking for 4 cars!
- An enclosed level front garden, mainly laid to lawn, with a sun terrace



Contemporary, stunning, and immaculately presented throughout, this detached 3-bedroom family home offers breathtaking coastal views over the coast path, Perranporth, and the beach through the immense sliding doors and full-width balcony. It is just 5-minute walk to Perranporth beach and local amenities. The property features solar hot water and is deceptively spacious. A 360-degree tour is available - Click the Link! The stunning open plan lounge/kitchen/diner is perfectly balanced for modern family life. There is off-road driveway parking, a handy outdoor



beach wash station perfect after a day on the sand, and separate utility room. This fantastic living space is just a stone's throw from the coastal path and includes an enclosed level front garden, mainly laid to lawn, with a sun terrace.