




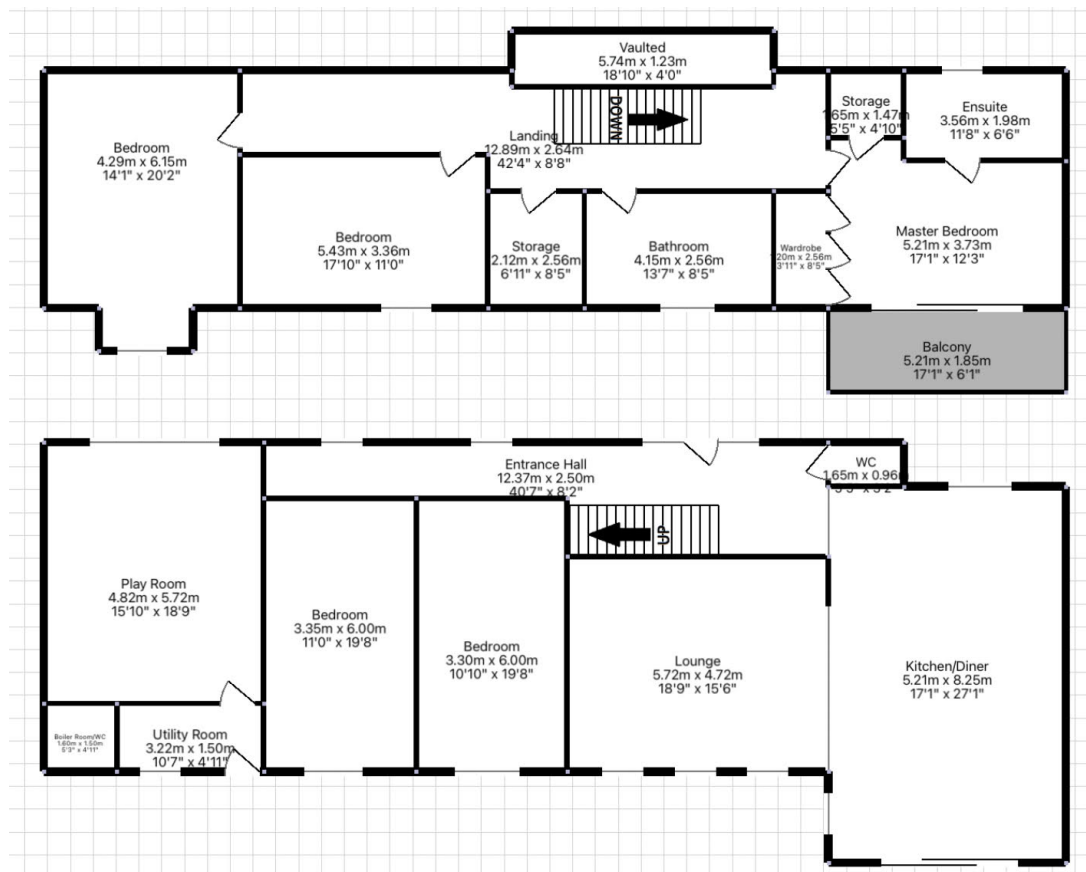
Tolgus Mount, Redruth - 3 Miles from Portreath Beach!

Offers In Region Of £649,950

 6  3  2



- Contemporary, stunning, detached, 5/6 bedroom, expansive and versatile family home.
- Offers flexibility: multigenerational family setup, Main house with one-bedroom annexe for holiday or long-term rentals.
- Stunning open plan lounge/kitchen/diner (perfectly balanced for modern family life)
- Sun terrace/patio area for alfresco dining
- Stunning rear countryside views!
- Boasting outstanding interior design with over 3,000 square feet of versatile living space
- Air Source Heating
- Off road, Driveway parking for numerous cars
- 3 miles to Stunning North Coast Beaches and spectacular coastal paths.
- Fantastic living space



Contemporary and stunning detached 5/6 bedroom family home, boasting outstanding interior design with over 3,000 square feet of versatile living space. Beautifully designed to offer flexibility for multigenerational family setup, including the option to create a private one-bedroom annexe for or long-term rentals (subject to planning). Features Air Source Heating, a stunning open plan kitchen/diner perfectly balanced for modern life, off road parking for numerous cars,



and a sun/patio area for alfresco dining. Located just 3 miles from North Coast beaches and spectacular coastal paths, with beautiful rear countryside views!