

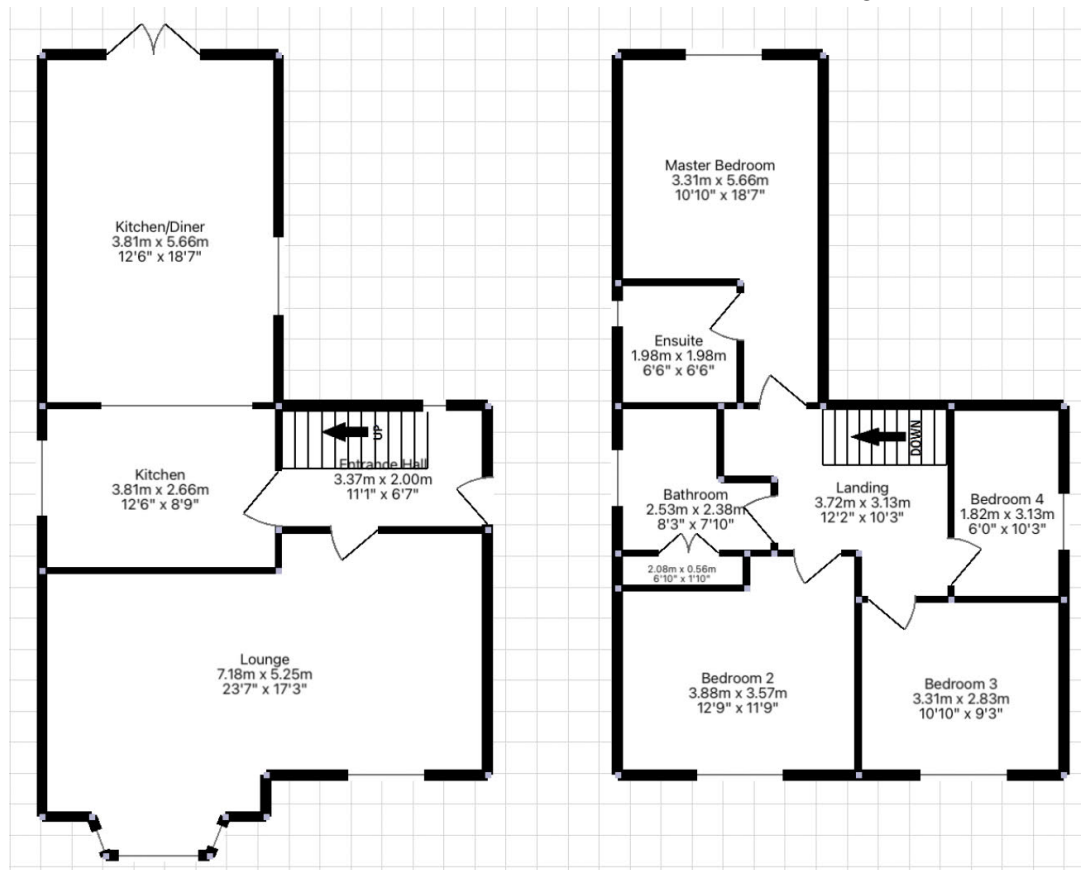
Neeham Road, St Newlyn East, Newquay

Offers In Region Of £550,000

🛏 4 🚗 2 🛋 1



- Stunning, iconic, detached, elegant 4-bedroom family home.
- Off-road driveway parking for 2 cars
- VERY SPACIOUS, APPROX 129 square metres!
- GREAT LOCAL AMENITIES AND SCHOOL NEARBY
- Open plan kitchen/diner, which is a masterpiece of design and flooded with natural light.
- Nestled in a highly sought-after, distinctive location.
- Large master bedroom with en-suite
- Meticulously maintained, thoughtfully designed, and presented in immaculate condition throughout!
- LOVELY VILLAGE LOCATION
- Large, level, PRIVATE enclosed rear garden laid to lawn, with mature shrub borders complete with sun terrace/alfresco dining area.



A stunning, iconic, detached, elegant 4-bedroom family home nestled in a highly sought-after, distinctive location. Off-road driveway parking for 2 cars. Master bedroom with en-suite. Very spacious, 129 square meters. Meticulously maintained, thoughtfully designed, and presented in excellent condition throughout. Great local amenities and schools nearby. village location. Open plan kitchen/diner, a masterpiece of design flooded with natural light. Large, enclosed garden laid to lawn, with mature shrub borders, complete with terrace/alfresco dining area.