

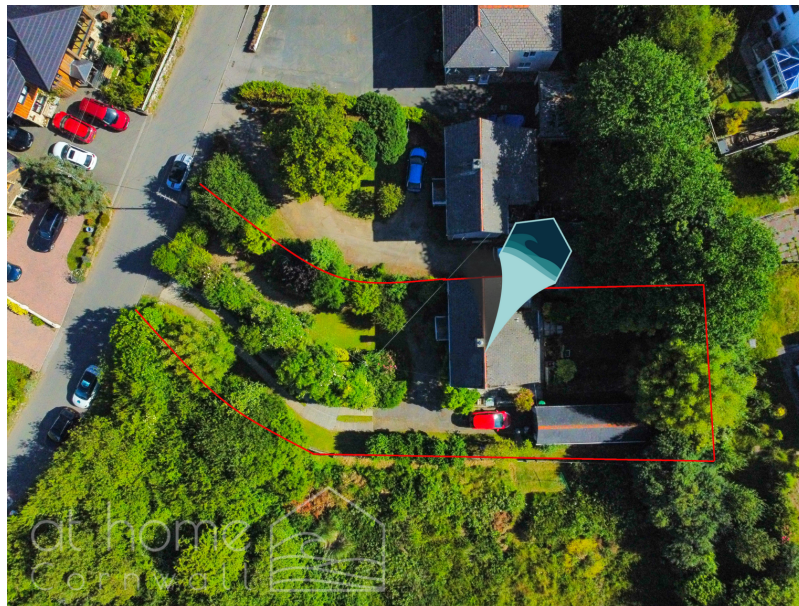


Kernick, Mill Road, Bolingey

Offers In Region Of £475,000

🛏️ 2 🚗 1 🛋️ 2

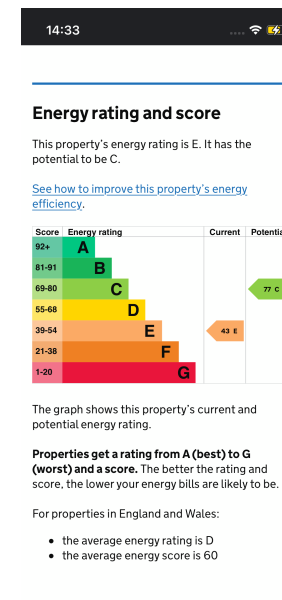
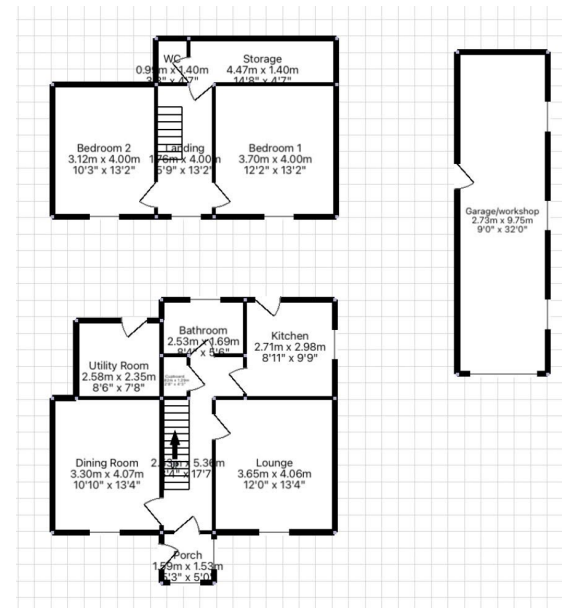
- Detached, 2-bedroom, Coastal family home.
- Set on a beautiful, large plot with a mix of mature planting and an expansive lawned area.
- Rural outlook with far reaching countryside views.
- Fantastic living space
- Scope for extending/remodelling accommodation (subject to relevant planning)
- Minutes from the stunning beaches of Perranporth
- Large, detached garage and workshop
- Off road, driveway parking for numerous cars
- NO ONGOING CHAIN
- Set back from main road, offering safety and security for children and pets



Detached, 2-bedroom COASTAL family home, Minutes from the stunning beaches of Perranporth! Set on a beautiful, large plot with a mix of mature planting and lawned areas. Large, detached garage and workshop. Rural outlook with far reaching countryside views. Deceptively spacious. Off road, driveway parking for numerous cars. Perfectly positioned 'a stone's throw' from the popular 'Saints Trail' cycle path which opened last year connecting Perranporth to Goonhavern, its now easier than ever to take advantage of all that the local area has to offer.

Fantastic living space, Highly sought-after location. NO ONGOING CHAIN. Scope for extending accommodation (subject to relevant planning). Set back from main road, offering safety and security for children and pets





01872 571 119
info@athomecornwall.co.uk

athomecornwall.co.uk

At Home Cornwall Ltd Company Reg: 12746530

Agents Note: Whilst every care has been taken to prepare these sales particulars, they are for guidance purposes only. All measurements are approximate are for general guidance purposes only and whilst every care has been taken to ensure their accuracy, they should not be relied upon and potential buyers are advised to recheck the measurements