



3 Alexandra Road, Illogan

Guide Price £499,950

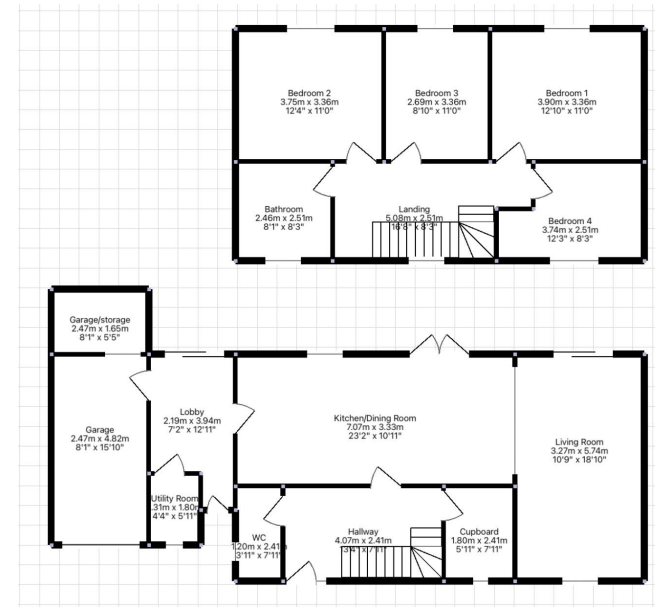
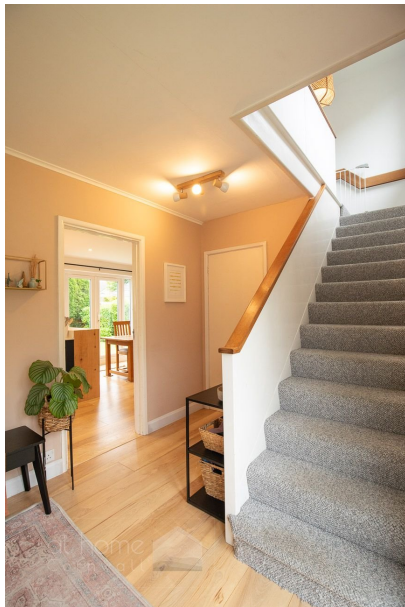
🛏️ 4 🚗 2 🛋️ 1

- Immaculately presented 4-bedroom detached family home
- Integral garage and parking for 3 cars
- Enclosed, large, level wraparound garden accompanied by a patio
- Close proximity to stunning North Coast Beaches and spectacular coastal paths
- Fantastic living space – Open plan lounge/kitchen/diner perfect for modern day living!
- Coastal – 2 miles from the beach!
- Popular, quiet, leafy location – Still close to local amenities
- Semi-rural, spacious interiors,
- Expansive, bright and airy
- Stylish and contemporary living space



Presenting an immaculate 4-bedroom detached family home, just 2 miles from the coast! It features an integral garage with parking for three cars. Nestled in a popular, tranquil, and verdant area, it remains conveniently close to local amenities. The property boasts a large, enclosed, level rear garden with a patio area perfect for alfresco dining, offering an ideal setting for family events and relaxation. Its semi-rural location, spacious interiors, and peaceful outdoor areas epitomise family living. Located near stunning North Coast beaches and breathtaking coastal paths, the home is expansive, luminous, and welcoming. It includes a sun terrace with an alfresco dining space. The fantastic living area is impeccably presented with a contemporary flair that makes a memorable impact. The stunning open-plan lounge/kitchen/diner is ideal for contemporary lifestyles. This stylish and modern living space is a captivating 4-bedroom home, thoughtfully designed for comfort and convenience, embodying modern sophistication.

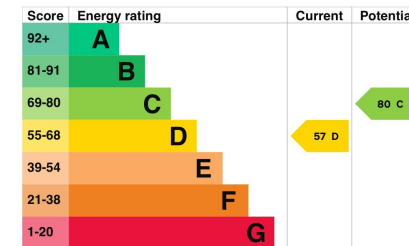




Energy rating and score

This property's energy rating is D. It has the potential to be C.

[See how to improve this property's energy efficiency.](#)



The graph shows this property's current and potential energy rating.

01872 571 119
info@athomecornwall.co.uk

At Home Cornwall Ltd Company Reg: 12746530

athomecornwall.co.uk

Agents Note: Whilst every care has been taken to prepare these sales particulars, they are for guidance purposes only. All measurements are approximate are for general guidance purposes only and whilst every care has been taken to ensure their accuracy, they should not be relied upon and potential buyers are advised to recheck the measurements