



Pentreath Terrace, Lanner, Redruth, TR16 6HP

Offers In Region Of £365,000

3 1

Contemporary, stunning, detached, 3-bedroom family home!
Built to an exceptionally high standard and nearing completion.
Central location 2-minute walk to local amenities. Beautifully
designed. Air Source Heating. Stunning open plan kitchen/diner.
Off road Parking!

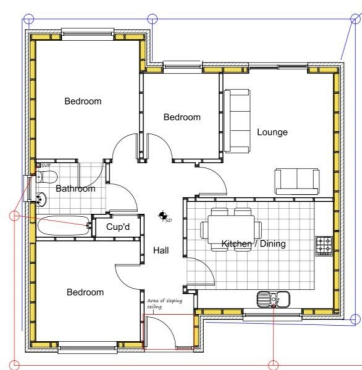


Floor Area: sq. ft.

Tenure: Freehold

Service Charge: £0 per annum

Ground Rent: £0 per annum



335a	
04	
Building Regs	
150	March 2022
Proposed Floor Plan	
Proposed Dwelling & Associated	
Building Regs	
335a	
04	



01872 571 119
info@athomecornwall.co.uk

At Home Cornwall Ltd Company Reg: 12746530

athomecornwall.co.uk

Agents Note: Whilst every care has been taken to prepare these sales particulars, they are for guidance purposes only. All measurements are approximate are for general guidance purposes only and whilst every care has been taken to ensure their accuracy, they should not be relied upon and potential buyers are advised to recheck the measurements