

3 BED

Floorplans, Site Plan and Spec.

There are nine generously-proportioned three-bedroom homes, carefully designed by our award-winning designers to maximise use of space. They comprise: entrance hall with large storage cupboard and cloakroom with low-level WC and wash-hand basin. There's a door to the open-plan living room with French doors to the rear garden and stairs to the first floor. On the landing are doors to a storage cupboard, three bedrooms and a family bathroom with shower over bath. There will be either a parking space or attached garage.

UTILITY/CUPBOARD

0.6 x 2m (1.2m²)

CLOAKROOM TOILET

1.3 x 2.7m (3.5m²)

KITCHEN/LIVING DINING ROOM

L-Shaped 5.4 x 7m (32.5m²)

BEDROOM 1

L-Shaped 4.3 x 3.1m (11.5m²)

ENSUITE

1.9 x 2.4m (3.65m²)

BEDROOM 2

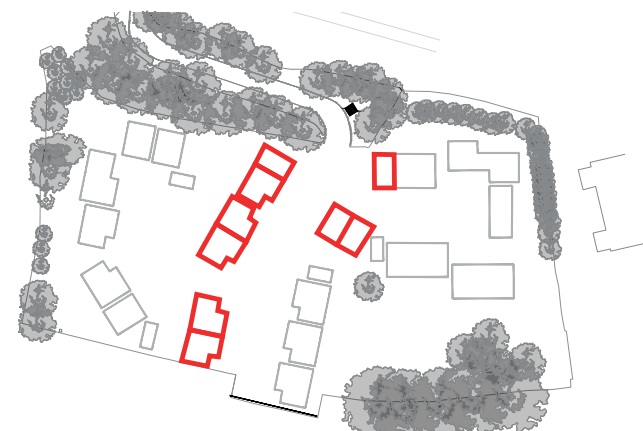
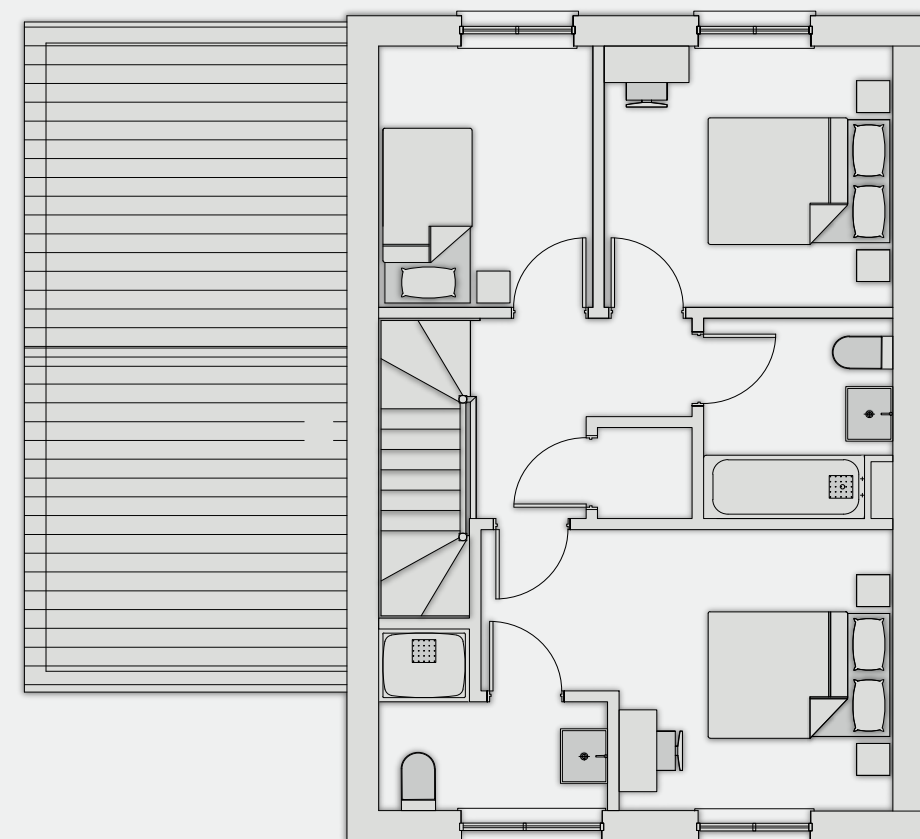
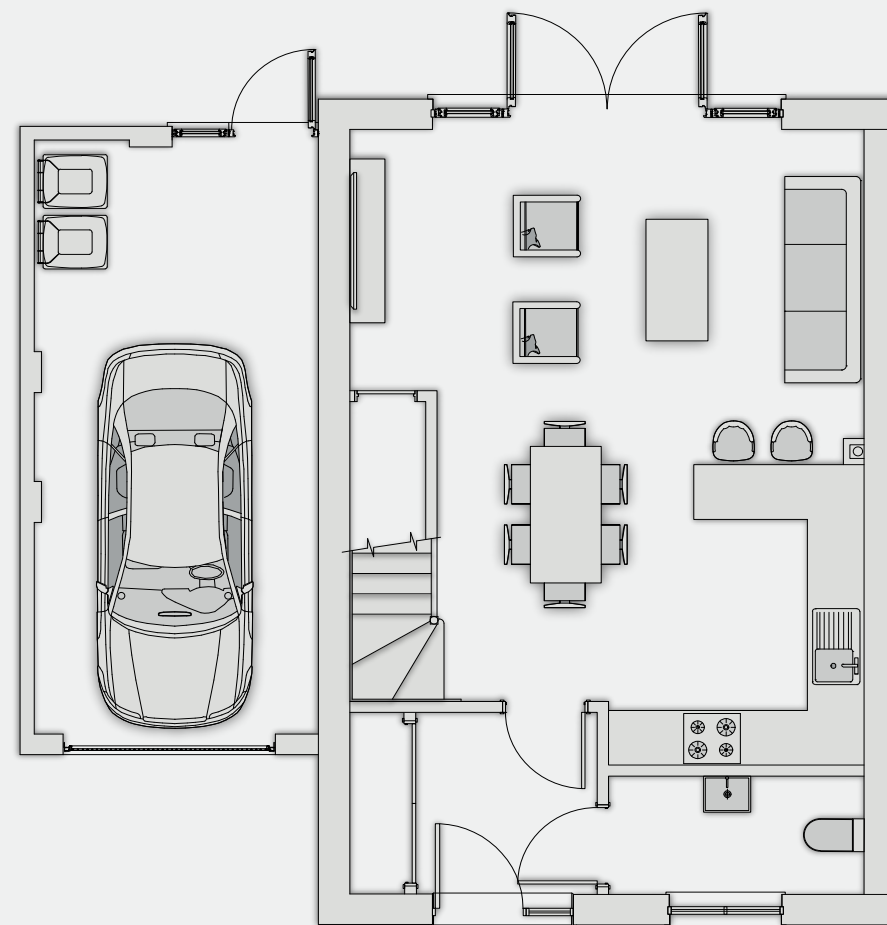
3 x 2.9m (8.7m²)

BEDROOM 3

2.3 x 2.9m (6.67m²)

FAMILY BATHROOM

2 x 2.2m (4.4m²)



Floor plans shown are for reference only and measurements are approximate and may vary. Exact layouts and sizes may vary. Dimensions, internal layouts, furniture, wardrobes, appliance specification and location are indicative only.