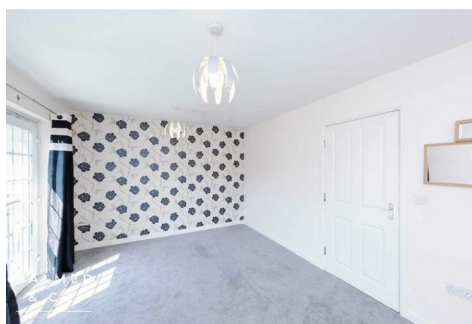


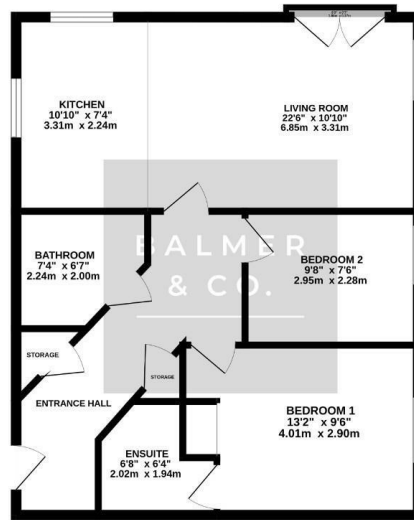
Redfield Croft, Leigh, WN7 1EN
£725 PCM



BALMER & CO are delighted to offer TO RENT this two bedroom first floor apartment. Accommodation comprises in brief, communal and private entrance hallway, sitting room with French doors, open plan fitted kitchen, two bedrooms, master with en-suite shower room, and further bathroom. Allocated and visitor parking.

Floor Plan

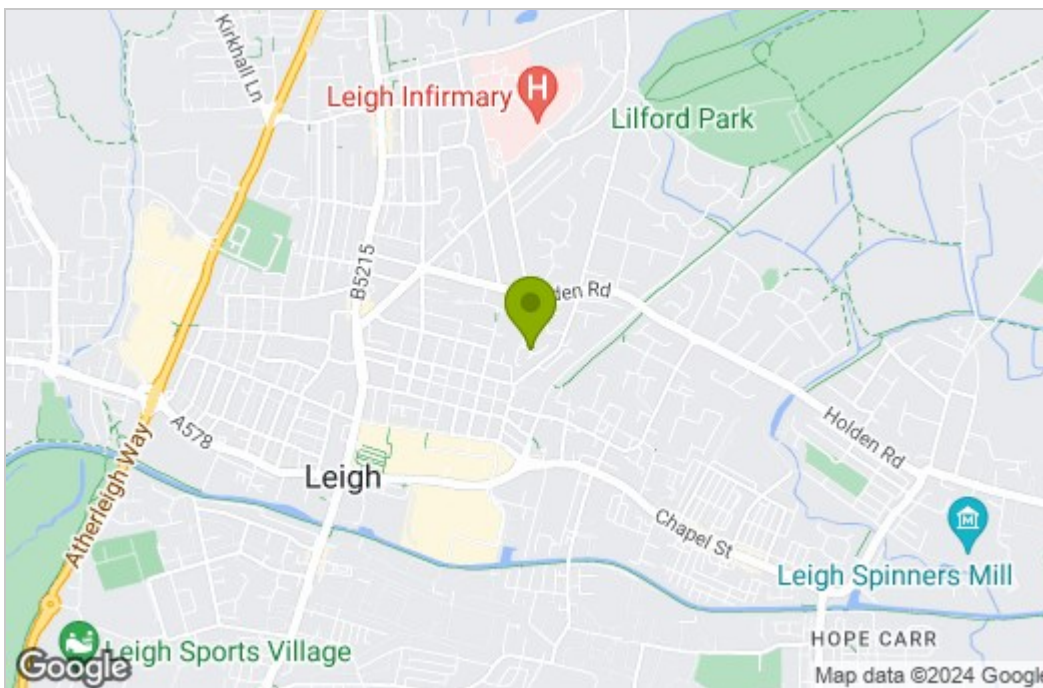
FIRST FLOOR
626 sq.ft. (58.1 sq.m.) approx.



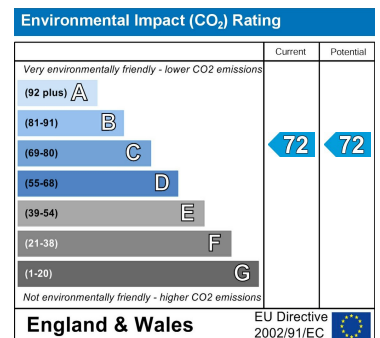
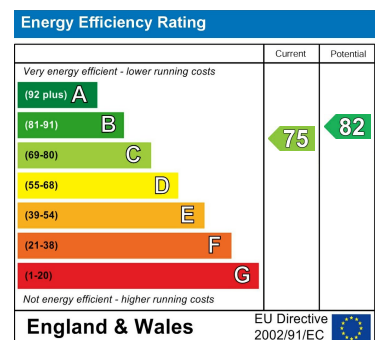
TOTAL FLOOR AREA: 626 sq.ft. (58.1 sq.m.) approx.
While every effort has been made to ensure the accuracy of the description contained here, measurements of rooms, fixtures, fittings and other items are approximate and no responsibility is taken for any error, omission or mis-statement. This plan is for illustrative purposes only and should be used as a guide for the prospective purchaser. The services, systems and appliances shown have not been tested and no guarantee can be made regarding their operation or efficiency. See the plan.
Made with ArchiCAD



Area Map



Energy Efficiency Graph



These particulars, whilst believed to be accurate are set out as a general outline only for guidance and do not constitute any part of an offer or contract. Intending purchasers should not rely on them as statements of representation of fact, but must satisfy themselves by inspection or otherwise as to their accuracy. No person in this firm's employment has the authority to make or give any representation or warranty in respect of the property.