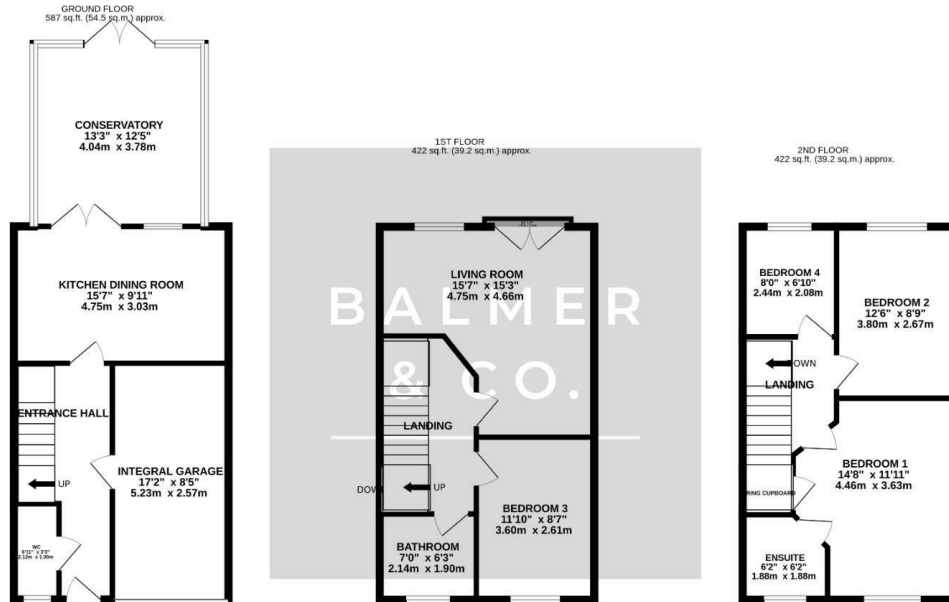


Blakemore Park, Atherton, M46 0EY
£1,095 PCM



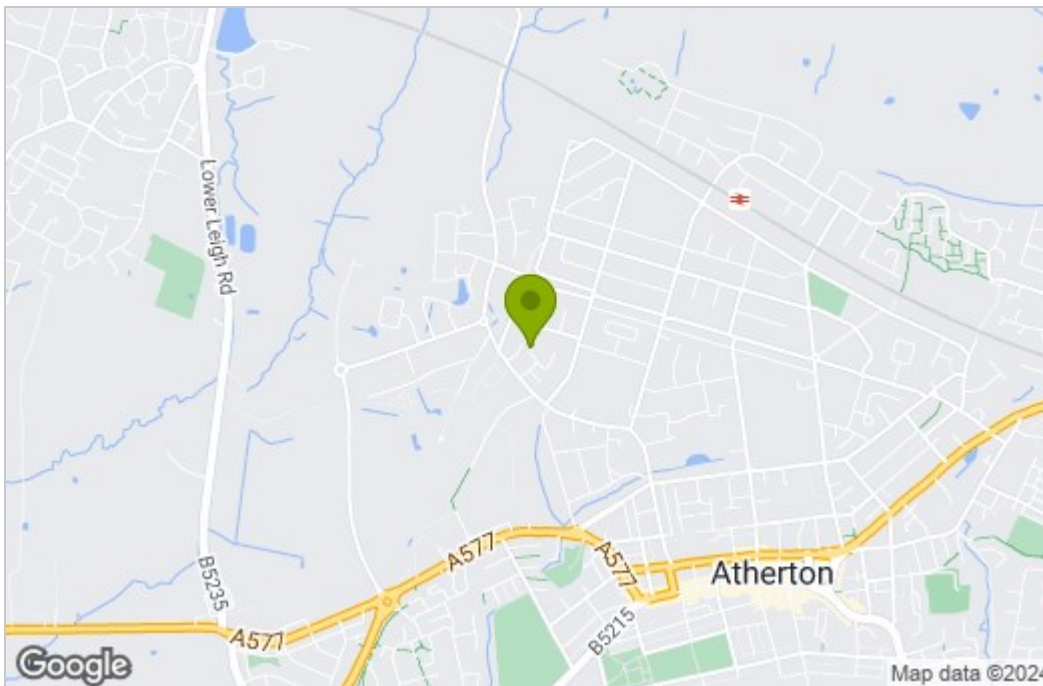
BALMER & CO are delighted to offer TO RENT this four bedroom townhouse available for immediate occupancy. Ground floor accommodation comprises in brief, entrance hall with downstairs cloakroom/W.C, access to an integral garage, kitchen dining room with appliances, and conservatory to rear with French doors opening to the rear gardens. To the first floor is a sitting room with Juliet balcony, one double bedroom, and family bathroom. To the second floor are two double bedrooms, master benefiting from en-suite shower room, and a further single bedroom. Outside are enclosed rear gardens with open plan gardens to front with driveway providing off parking.

Floor Plan

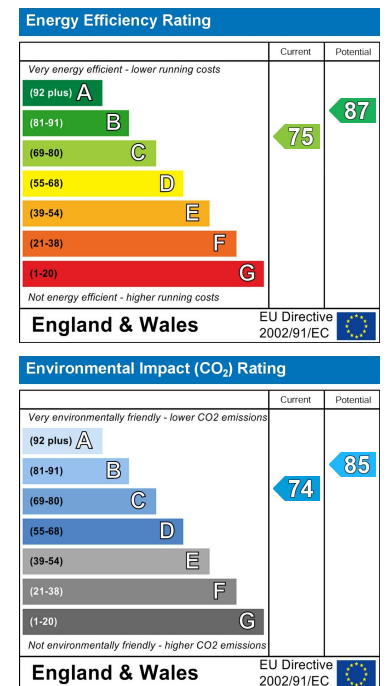


TOTAL FLOOR AREA: 1431 sq.ft. (133.0 sq.m.) approx.
Whilst every attempt has been made to ensure the accuracy of the floorplan contained here, measurements of doors, windows, rooms and any other items are approximate and no responsibility is taken for any error, omission or mis-statement. This plan is for illustrative purposes only and should be used as such by any prospective purchaser. The services, systems and appliances shown have not been tested and no guarantee as to their operability or efficiency can be given.
Made with Metropix ©2024

Area Map



Energy Efficiency Graph



These particulars, whilst believed to be accurate are set out as a general outline only for guidance and do not constitute any part of an offer or contract. Intending purchasers should not rely on them as statements of representation of fact, but must satisfy themselves by inspection or otherwise as to their accuracy. No person in this firm's employment has the authority to make or give any representation or warranty in respect of the property.