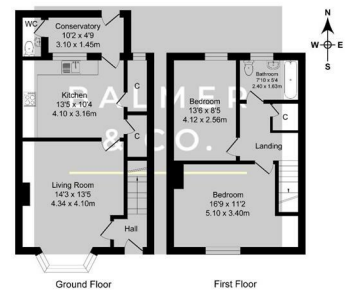


York Street, Leigh, WN7 2NF
£795 PCM



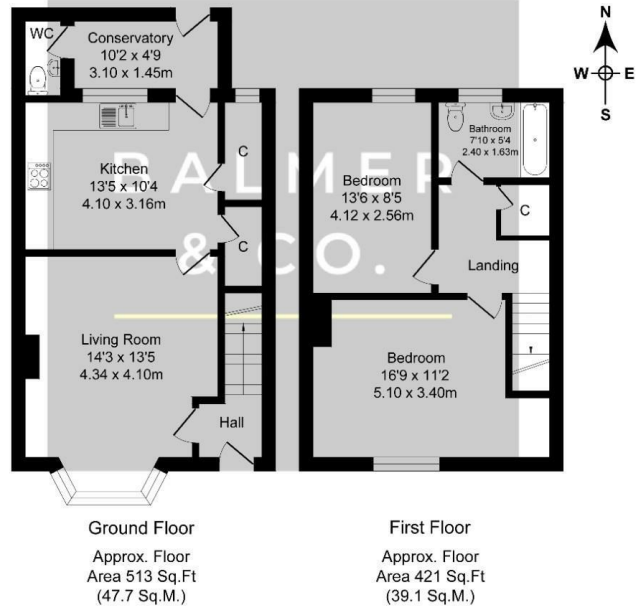
Surveyed and drawn by Lens Media for illustrative purposes only. Not to scale. Whilst every attempt was made to ensure the accuracy of the floor plan, all measurements are approximate and no responsibility is taken for any error.



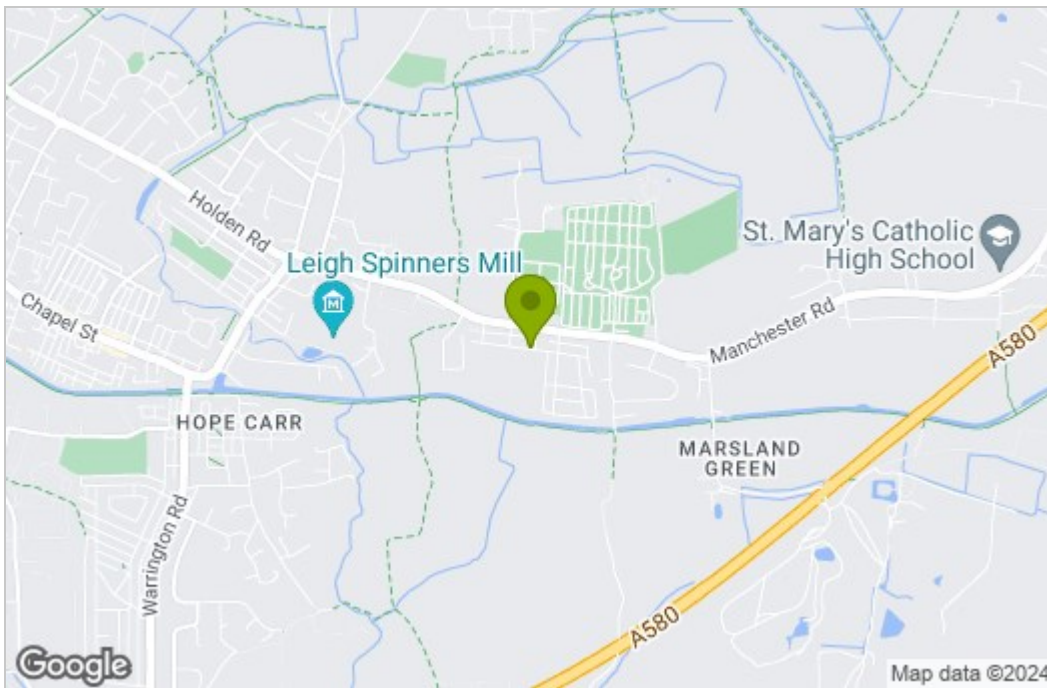
BALMER & CO are delighted to offer TO RENT this two bedroom mid terraced property, available for immediate occupancy. Ground floor accommodation comprises in brief, entrance hall, sitting room, kitchen dining room, and extension to rear with downstairs W.C. To the first floor are two well proportioned bedrooms and bathroom. Outside are enclosed gardens front and rear.

Floor Plan

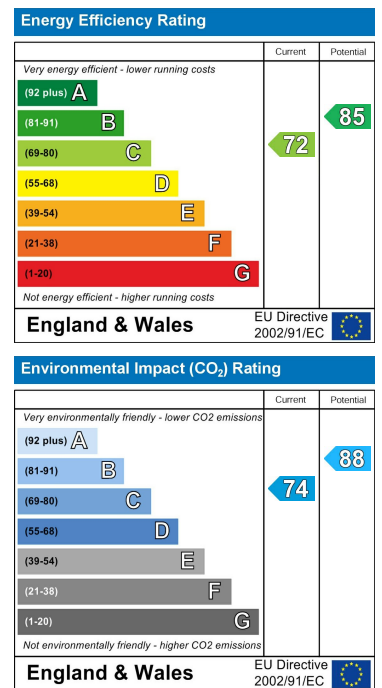
York Road, Leigh
 Total Approx. Floor Area 934 Sq.ft. (86.8 Sq.M.)
 Surveyed and drawn by Lens Media for illustrative purposes only. Not to scale. Whilst every attempt was made to ensure the accuracy of the floor plan, all measurements are approximate and no responsibility is taken for any error.



Area Map



Energy Efficiency Graph



These particulars, whilst believed to be accurate are set out as a general outline only for guidance and do not constitute any part of an offer or contract. Intending purchasers should not rely on them as statements of representation of fact, but must satisfy themselves by inspection or otherwise as to their accuracy. No person in this firm's employment has the authority to make or give any representation or warranty in respect of the property.