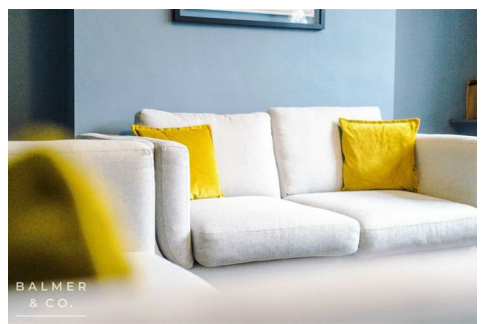
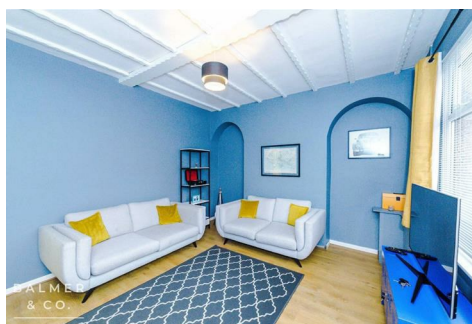
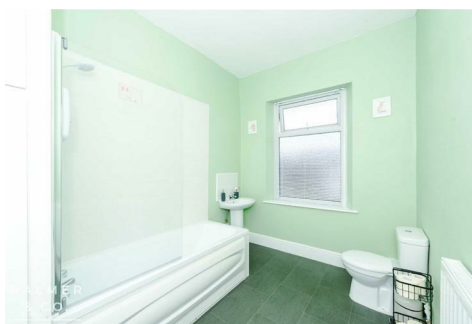
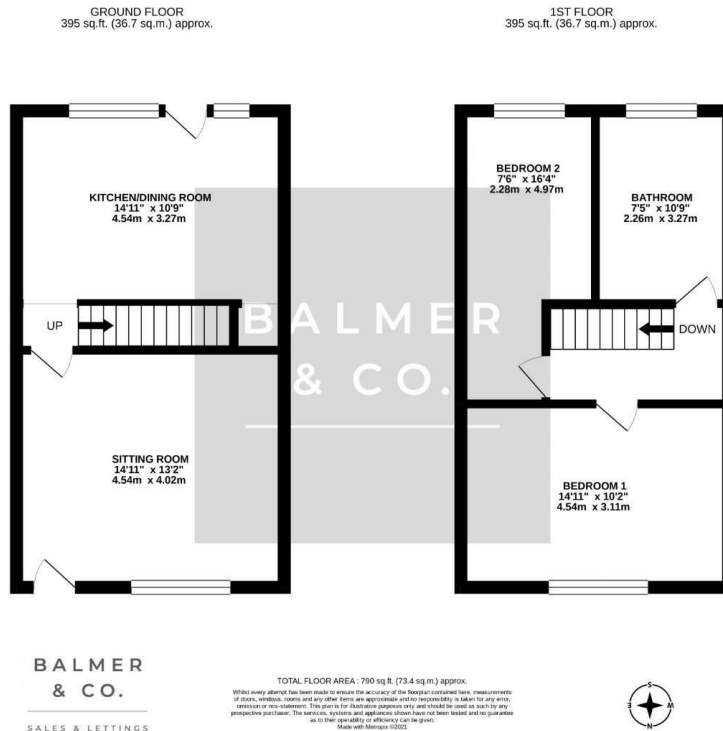


Scott Street, Leigh, WN7 5AL
£750 PCM

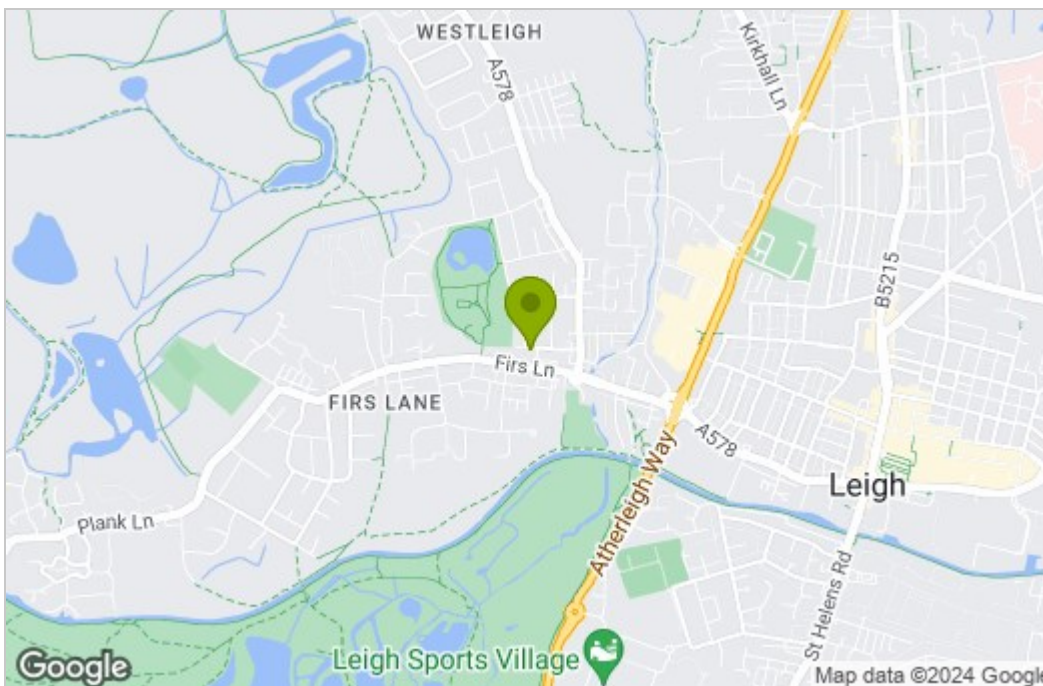


BALMER & CO are delighted to offer TO RENT this two bedroom mid terraced property ready for immediate occupancy. Ground floor accommodation comprises in brief, entrance vestibule, sitting room and kitchen dining room. To the first floor are two well proportioned bedrooms and bathroom. Outside to the rear is an enclosed low maintenance garden.

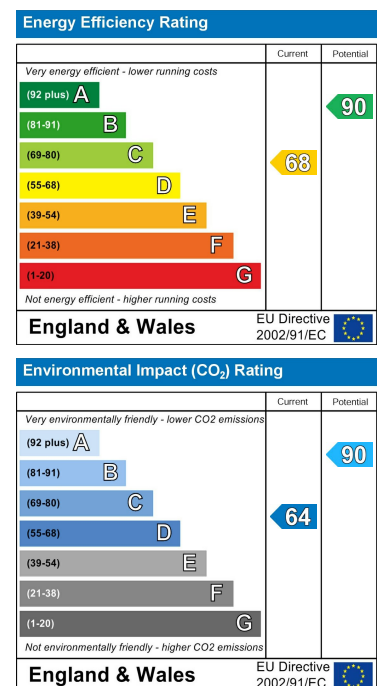
Floor Plan



Area Map



Energy Efficiency Graph



These particulars, whilst believed to be accurate are set out as a general outline only for guidance and do not constitute any part of an offer or contract. Intending purchasers should not rely on them as statements of representation of fact, but must satisfy themselves by inspection or otherwise as to their accuracy. No person in this firm's employment has the authority to make or give any representation or warranty in respect of the property.