



## 4 Mullway, Letchworth Garden City, SG6 4BH

**£365,000**

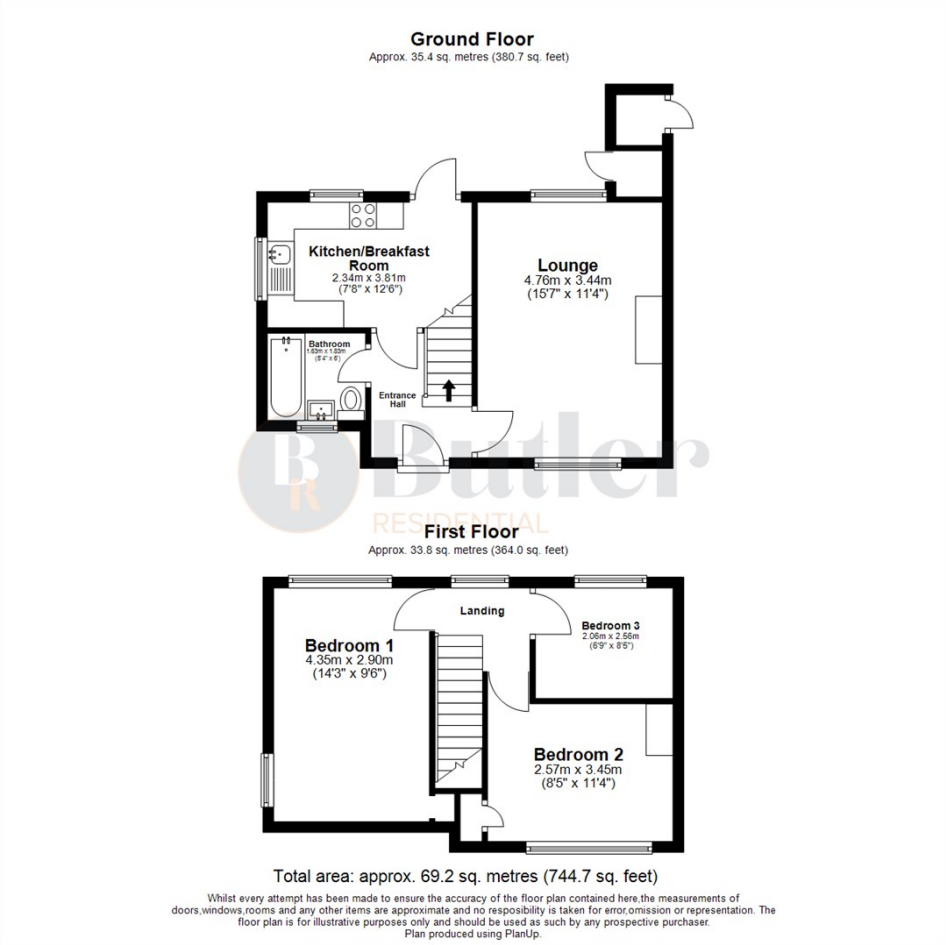
Located in Letchworth Garden City is this freehold, semi-detached property with three bedrooms and off road parking.

Step into a bright and welcoming entrance hall, featuring Karndean flooring underfoot. To the right is a spacious lounge, filled with natural light thanks to dual-aspect windows offering views of both the garden and the front of the property. Continue through to the kitchen, which has been modernised with sleek white gloss cabinets, oak-effect worktops, and classic metro tiles. Appliances include a four-ring gas hob with extractor fan, an eye-level fan oven, and there is space for a fridge-freezer, washing machine, and dishwasher. To the side of the kitchen, there is room for a dining table perfect for family meals.

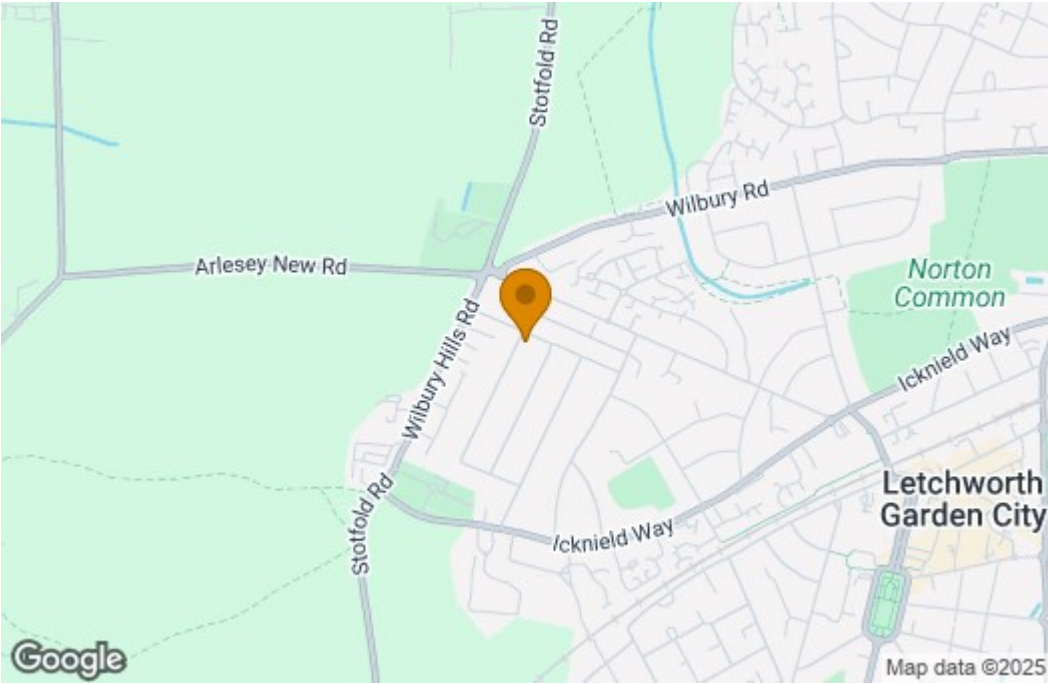
As is typical with properties of this style, the bathroom is located downstairs off the entrance hall. The recently refitted three-piece suite features porcelain tiling, a bath with shower over, and a vanity sink unit.



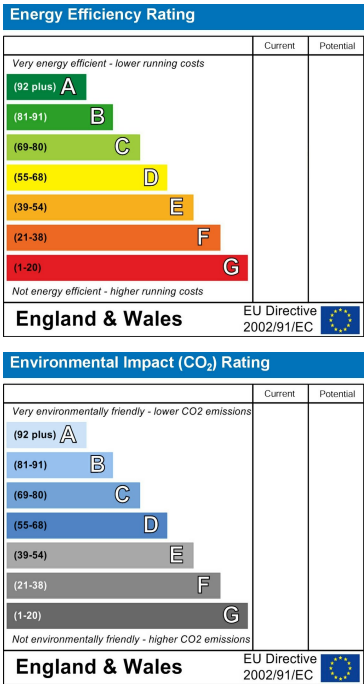
Floor Plan



Area Map



Energy Efficiency Graph



These particulars, whilst believed to be accurate are set out as a general outline only for guidance and do not constitute any part of an offer or contract. Intending purchasers should not rely on them as statements of representation of fact, but must satisfy themselves by inspection or otherwise as to their accuracy. No person in this firms employment has the authority to make or give any representation or warranty in respect of the property.