



**89 Grange Road**  
Blunham, Bedford, MK44 3NS  
**£1,350,000**





## 89 Grange Road

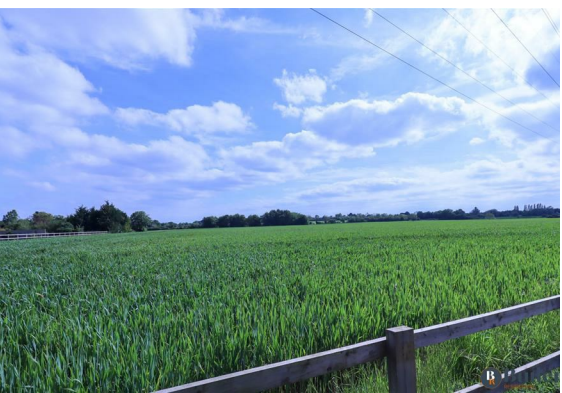
Blunham, Bedford, MK44 3NS

Located in Blunham on the prestigious Grange Road, nestled in the Bedfordshire countryside is this brand new architecturally designed home, due to be completed in December 2024.

Grange View stands as a beacon of contemporary design amidst the rural landscape, with its unique architecture setting it apart from traditional homes in the area.

The modern and spacious layout will be perfect for those who appreciate both aesthetics and functionality. Step inside the welcoming entrance hall and venture through to the heart of the home. The kitchen has been designed with the view in mind, with floor-to-ceiling windows creating a seamless connection with nature. Adjacent to the kitchen will be a large and inviting lounge perfect for relaxation and entertainment, with bi-folding doors across the back flooding the room with natural light, and bringing the outside in. Off the lounge will be a convenient study, the perfect space to work remotely or for those with creative pursuits. Next door a utility room ensures practicality and convenience, and a separate W/C will be positioned off the entrance hall.

To the left of the property will be the inclusion of four bedrooms, two of which are ensuite, providing ample space for family and guests. A dressing room off the principal bedroom will add a touch of luxury to the sleeping quarters. Finally a family bathroom will complete the internal living space.





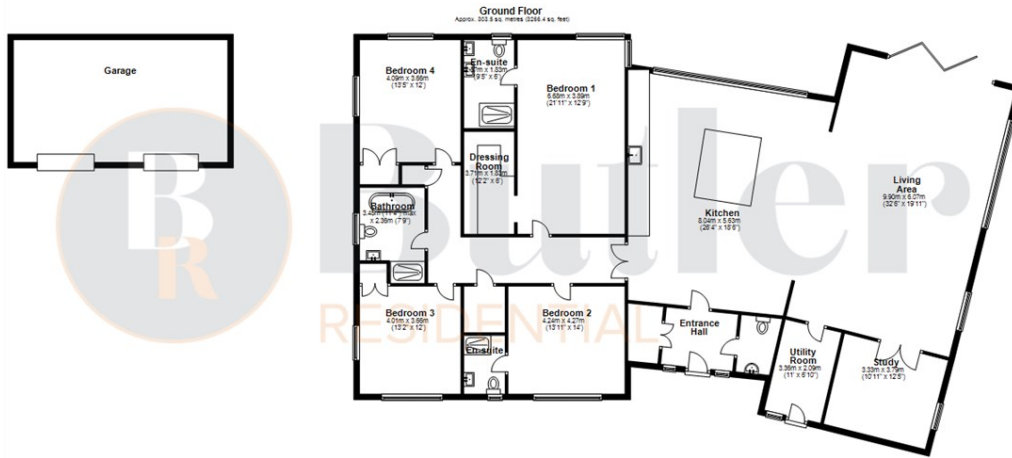


Outside a double garage will be a practical addition, providing storage and shelter for vehicles. And with a wrap-around garden, there is plenty of outdoor space to sit back and enjoy.

Due to be completed in December 2024

Blunham is a popular Bedfordshire village with direct access to the A1 and is well located for commuting via car or train into London's Kings Cross via Sandy train station. The village has a primary school as well as a local convenience store and pub, and many countryside walks along the river Ivel

## Floor Plan



Total area: approx. 303.5 sq. metres (3266.4 sq. feet)

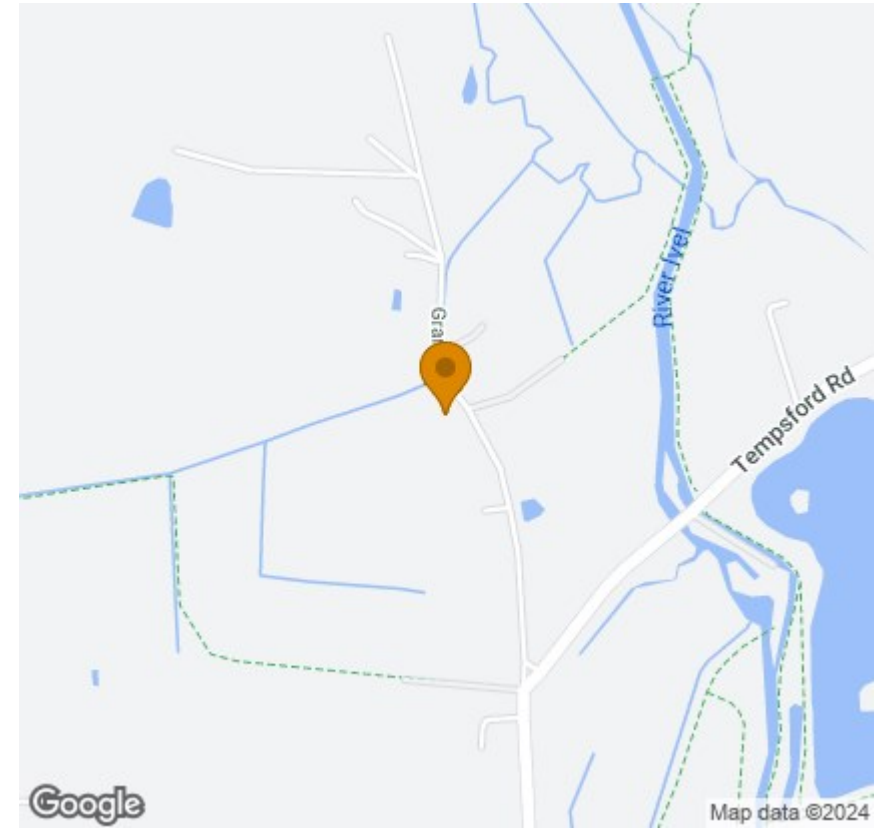
These particulars are intended to provide a general outline only for guidance and do not constitute any part of an offer or contract. Intending purchasers should not rely on them as statements of representation of fact, but must satisfy themselves by inspection or otherwise as to their accuracy. No person in this firm's employment has the authority to make or give any representation or warranty in respect of the property.

## Viewing

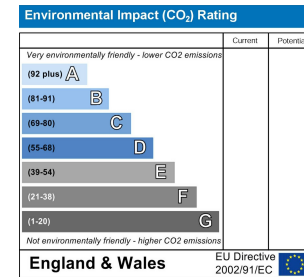
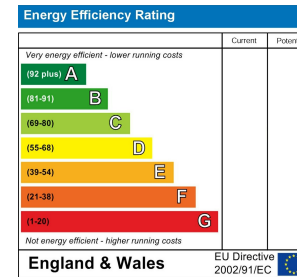
Please contact us on 01438 584400 if you wish to arrange a viewing appointment for this property or require further information.

These particulars, whilst believed to be accurate are set out as a general outline only for guidance and do not constitute any part of an offer or contract. Intending purchasers should not rely on them as statements of representation of fact, but must satisfy themselves by inspection or otherwise as to their accuracy. No person in this firm's employment has the authority to make or give any representation or warranty in respect of the property.

## Area Map



## Energy Efficiency Graph



**Address:** Suite 2, First Floor, Unit B, Balbir House Norton Green Road, Stevenage, SG1 2LP

**Tel:** 01438 584400

**Email:** hello@butlerresidential.co.uk



butlerresidential.co.uk