



ESTATE AGENTS

www.cwestateagents.co.uk



20 Holbury Close, Crewe CW1 3XU

Offers in excess of £85,000

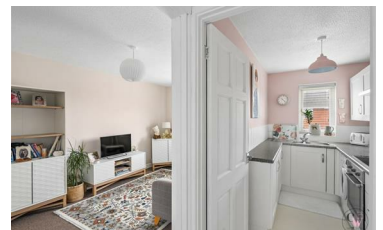


Tucked away in a quiet and sought-after cul-de-sac, this beautifully maintained first floor apartment on Holbury Close offers the perfect blend of comfort, convenience, and style.

Boasting its own private entrance, allocated parking, and a charming garden area, this property feels more like a home than a typical apartment. Once inside, you're welcomed by stairs leading to a bright and spacious interior, thoughtfully designed for modern living.

The apartment features a generous lounge, ideal for relaxing or entertaining, a large double bedroom with built-in storage, and a sleek, contemporary kitchen and bathroom – all finished to a high standard and ready to move into. Externally there is allocated parking and garden area.

- Located on the outskirts of Crewe ideal for train station, Leighton Hospital and Bentley Motors
- Beautifully presented first floor apartment.
- Ideal first time home or buy to let opportunity
- Own front door and entrance hallway.
- Allocated parking and garden area.
- Modern and ready to move into.



01606 514 152



info@cwestateagents.co.uk



@CWestateAgent



@CWestateAgents