



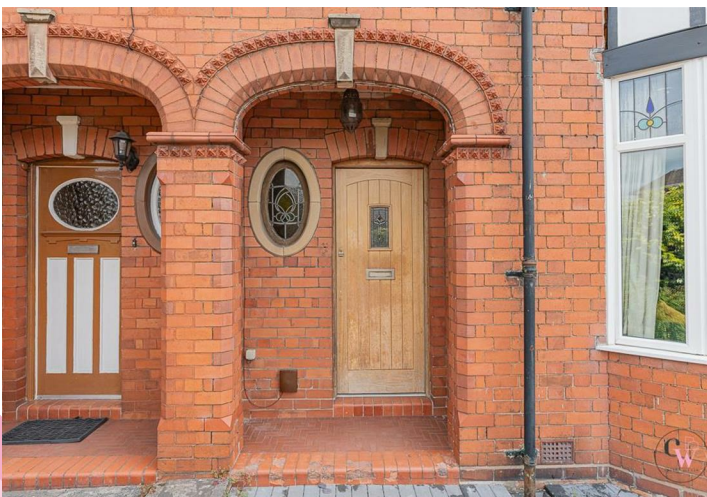
ESTATE AGENTS

www.cwestateagents.co.uk



Swanlow Lane, Winsford CW7 1JB

Offers in excess of £325,000



01606 514 152 info@cwestateagents.co.uk
@CWestateAgent @CWestateAgents

Swanlow Lane

, Winsford, CW7 1JB

Offers in excess of £325,000



Hallway

Lounge

12'4" x 11'9" (3.76m x 3.60m)

Open Plan Breakfast Kitchen With Island

19'8" x 15'6" (6.00m x 4.73m)

Family Area/Breakfast Room

10'2" x 6'9" (3.10m x 2.07m)

Utility Room

11'1" x 6'2" (3.38m x 1.90m)

Landing

Bedroom One

12'4" x 11'9" (3.76m x 3.60m)

Ensuite/Dressing Room

10'9" x 6'8" (3.29m x 2.04m)

All pipework ready for the En-suite should you so wish to keep it that way.

Bedroom Two

11'9" x 11'5" (3.60m x 3.50m)

Bedroom Three

14'8" x 6'8" (4.49m x 2.05m)

Bedroom Four

7'10" x 5'9" (2.41m x 1.76m)

Family Bathroom

8'4" x 6'2" (2.56m x 1.89m)

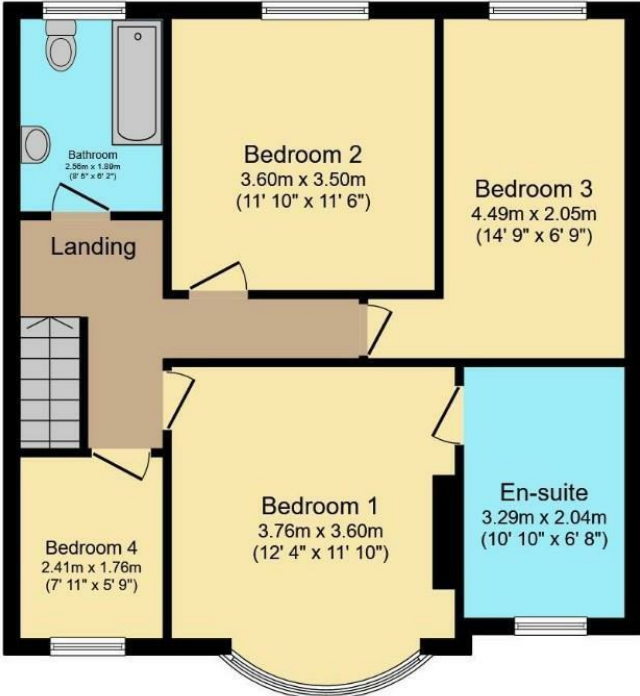
Externally & Gardens



Floor Plan



Ground Floor



First Floor

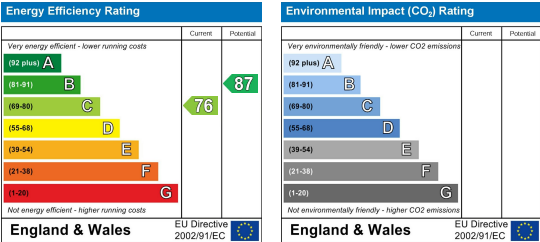
Total floor area 132.3 m² (1,424 sq.ft.) approx

This floor plan is for illustrative purposes only. It is not drawn to scale. Any measurements, floor areas (including any total floor area), openings and orientation are approximate. No details are guaranteed, they cannot be relied upon for any purpose and they do not form part of any agreement. No liability is taken for any error, omission or misstatement. A party must rely upon its own inspection(s). Plan produced for Purplebricks. Powered by www.focalagent.com

Viewing

Please contact us on 01606 514 152 if you wish to arrange a viewing appointment for this property or require further information.

Energy Efficiency Graph



These particulars, whilst believed to be accurate are set out as a general outline only for guidance and do not constitute any part of an offer or contract. Intending purchasers should not rely on them as statements of representation of fact, but must satisfy themselves by inspection or otherwise as to their accuracy. No person in this firm's employment has the authority to make or give any representation or warranty in respect of the property.