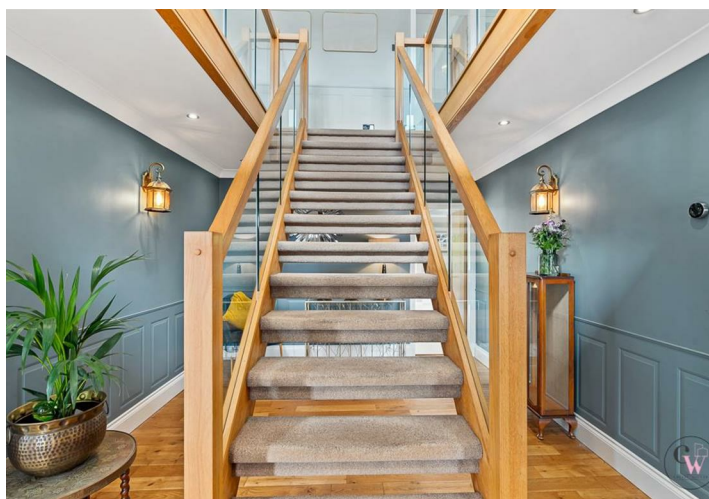




**Hareswood Close, Winsford CW7 2TP**

Asking price £550,000



# Hareswood Close

, Winsford, CW7 2TP

Asking price £550,000



## Entrance Hall

## Lounge

24'4 x 15'11 (7.42m x 4.85m)

## Study/Home Office

12'7 x 12'6 (3.84m x 3.81m)

## Dining Area

15'8 x 10'7 (4.78m x 3.23m)

## Breakfast Kitchen

22'11 x 12'10 (6.99m x 3.91m)

## Utility Room

## Galleried Landing

## Bedroom One

26'9 x 16'0 (8.15m x 4.88m)

## Ensuite

## Bedroom Two

15'11 x 11'1 (4.85m x 3.38m )

## Bedroom Three

13'1 x 12'9 (3.99m x 3.89m )

## Bedroom Four

12'9 x 10'7 (3.89m x 3.23m)

## Family Bathroom

9'3 x 8'8 (2.82m x 2.64m)

## Externally

Attached Double Garage

Summer house





Floor Plan



Viewing

Please contact us on 01606 514 152 if you wish to arrange a viewing appointment for this property or require further information.

These particulars, whilst believed to be accurate are set out as a general outline only for guidance and do not constitute any part of an offer or contract. Intending purchasers should not rely on them as statements of representation of fact, but must satisfy themselves by inspection or otherwise as to their accuracy. No person in this firm's employment has the authority to make or give any representation or warranty in respect of the property.

Energy Efficiency Graph

