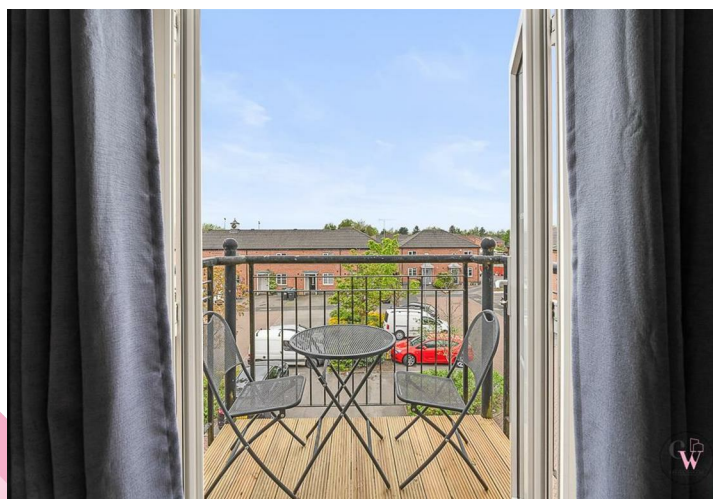




## Lyndale Court, Winsford CW7 3BZ

Offers in excess of £75,000



# Lyndale Court

, Winsford, CW7 3BZ

Offers in excess of £75,000



## Hallway

9'4" x 6'0" (2.852m x 1.843m)

## Lounge

16'1" x 13'4" (4.916m x 4.080)

With French doors onto balcony

## Kitchen

8'8" x 5'9" (2.650m x 1.777m)

## Bedroom One

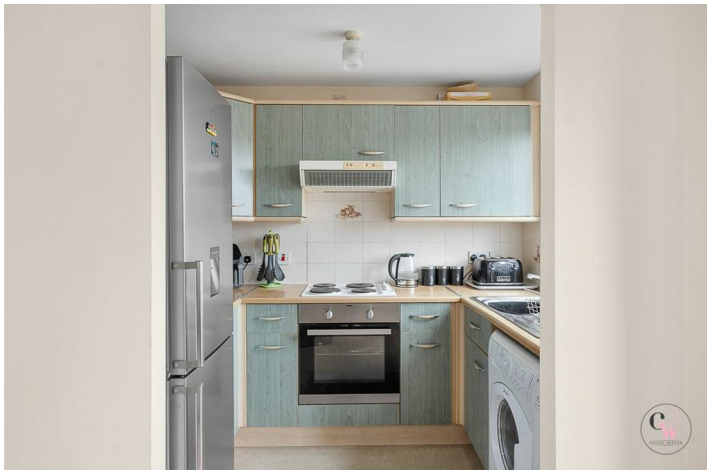
11'9" x 8'5" (3.595m x 2.581m)

## Shower Room

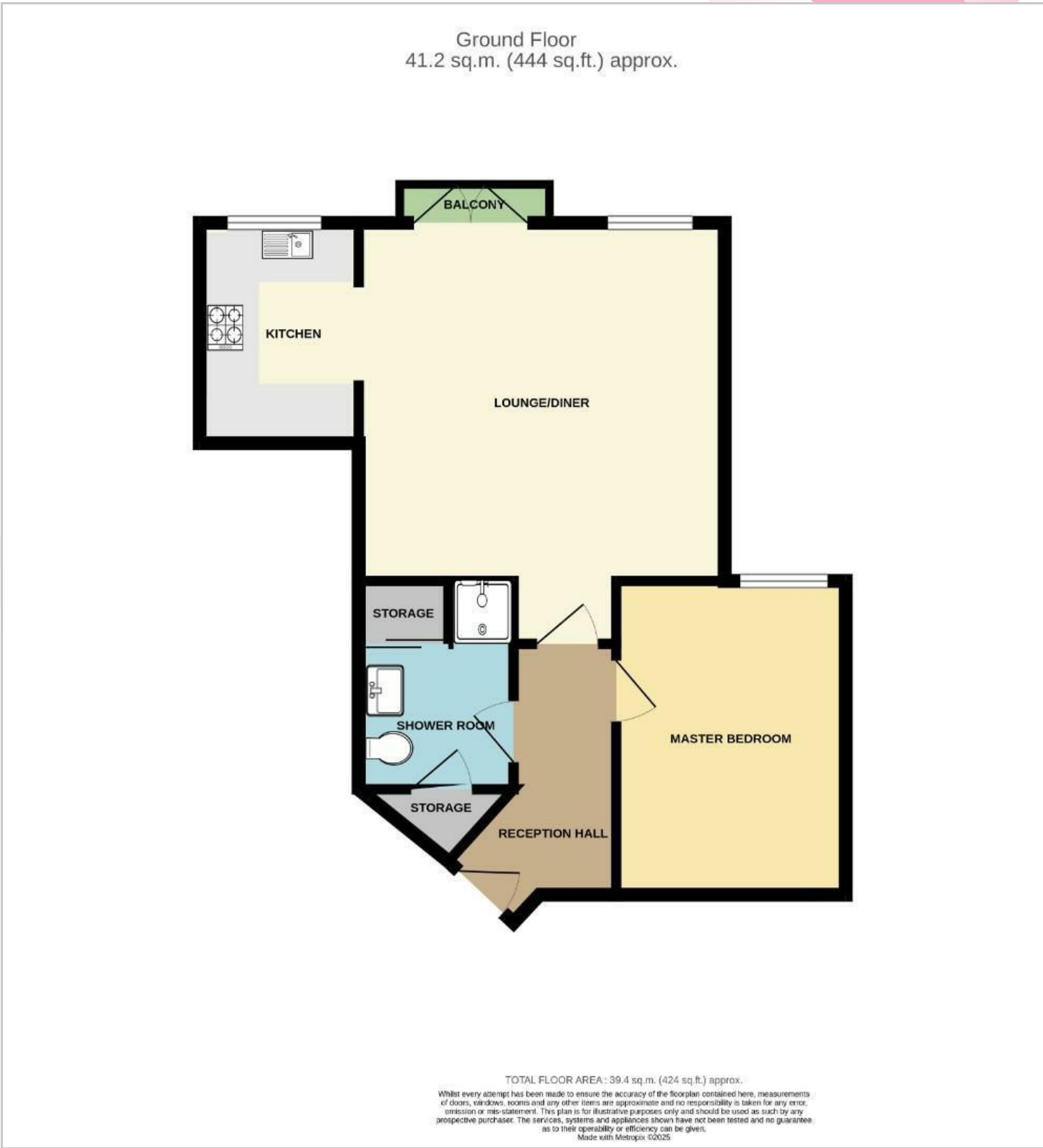
7'5" x 5'8" (2.275m x 1.735m)

## Communal Hallway





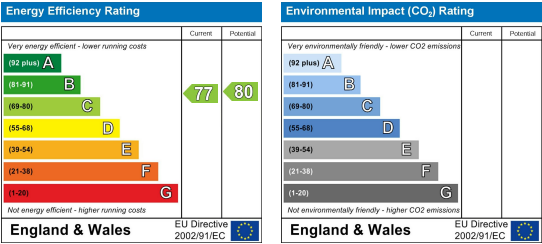
Floor Plan



Viewing

Please contact us on 01606 514 152 if you wish to arrange a viewing appointment for this property or require further information.

Energy Efficiency Graph



These particulars, whilst believed to be accurate are set out as a general outline only for guidance and do not constitute any part of an offer or contract. Intending purchasers should not rely on them as statements of representation of fact, but must satisfy themselves by inspection or otherwise as to their accuracy. No person in this firm's employment has the authority to make or give any representation or warranty in respect of the property.