



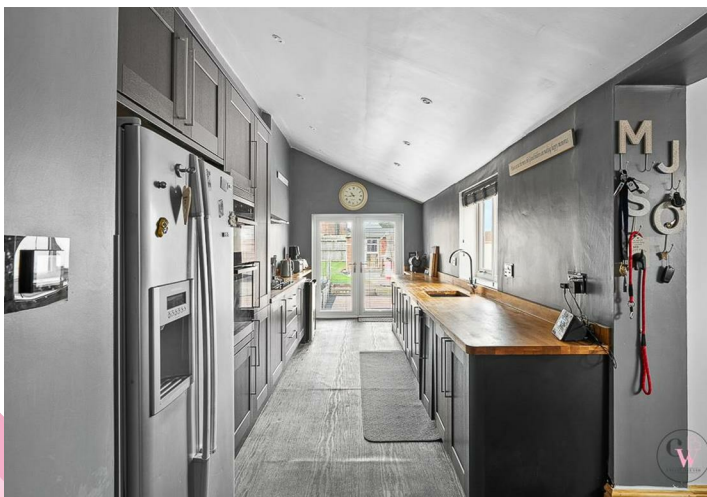
ESTATE AGENTS

[www.cwestateagents.co.uk](http://www.cwestateagents.co.uk)



**Gladstone Street, Winsford CW7 4AT**

Offers in the region of £260,000

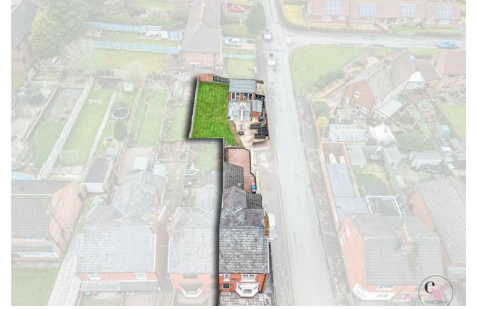


01606 514 152 [info@cwestateagents.co.uk](mailto:info@cwestateagents.co.uk)  
[@CWestateAgent](#) [@CWestateAgents](#)

# Gladstone Street

, Winsford, CW7 4AT

Offers in the region of £260,000



## Entrance Hall

## Lounge

12'5 x 11'7 (3.78m x 3.53m)

## Dining Room

13'4 x 12'4 (4.06m x 3.76m)

## Breakfast Kitchen

33'7 x 16'3 (10.24m x 4.95m )

## Landing

## Bedroom One

12'3 x 10'8 (3.73m x 3.25m )

## Bedroom Two

9'8 x 8'9 (2.95m x 2.67m)

## Bedroom Three

8'6 x 7' (2.59m x 2.13m)

## Family Bathroom

## Externally

Front - paved garden enclosed with timber fence





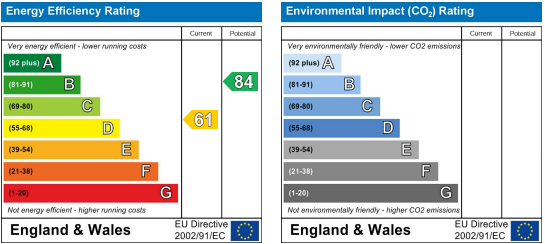
Floor Plan



Viewing

Please contact us on 01606 514 152 if you wish to arrange a viewing appointment for this property or require further information.

Energy Efficiency Graph



These particulars, whilst believed to be accurate are set out as a general outline only for guidance and do not constitute any part of an offer or contract. Intending purchasers should not rely on them as statements of representation of fact, but must satisfy themselves by inspection or otherwise as to their accuracy. No person in this firm's employment has the authority to make or give any representation or warranty in respect of the property.