



ESTATE AGENTS

[www.cwestateagents.co.uk](http://www.cwestateagents.co.uk)



**Swanlow Lane, Winsford CW7 1JJ**

Offers in excess of £550,000



01606 514 152 info@cwestateagents.co.uk  
@CWestateAgent @CWestateAgents

# Swanlow Lane

, Winsford, CW7 1JJ

Offers in excess of £550,000



## Porch

## Hallway

23'6" x 8'2" (7.188m x 2.511)

## Lounge

23'8" x 15'4" (7.235m x 4.688m)

## Breakfast Kitchen With Family Room

25'11" x 16'1" (7.916m x 4.909m)

## Dining Room

15'6" x 15'5" (4.731m x 4.708)

## Snug/Office/Play Room

11'8" x 10'1" (3.570m x 3.083m)

## Downstairs Cloaks

## Cellar

The cellar is split into three parts, one being utilised as a gym and one being used as a utility area, all have power and lighting.

## Landing

## Bedroom One with Walk In Wardrobe

15'3" x 13'5" (4.662m x 4.100m )

## En-Suite

## Bedroom Two with Walk In Wardrobe

16'4" x 15'1" (4.990m x 4.621m )

## Bedroom Three with Walk In Wardrobe

15'11" x 10'11" (4.876m x 3.35)

## Bedroom Four

15'7" x 15'5" (4.766m x 4.703m)

## Family Bathroom

14'6" x 8'8" (4.436m x 2.667m)

## Loft Space Area One

12'5" x 9'0" (3.803m x 2.745m)

## Loft Space Area Two

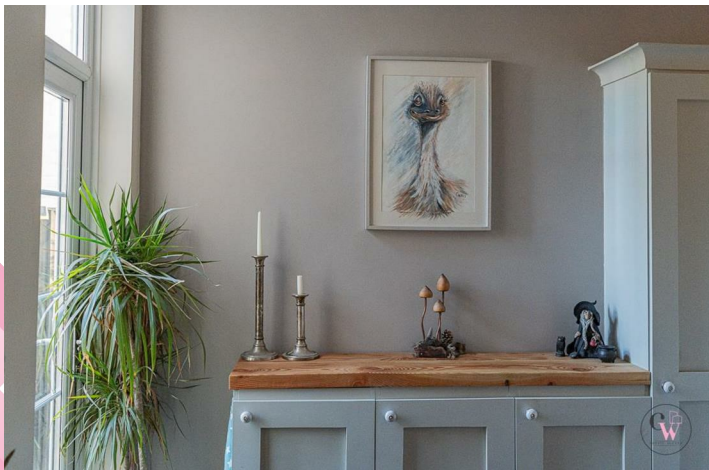
15'10" x 14'3" (4.830m x 4.359m)

## Loft Space Area Three

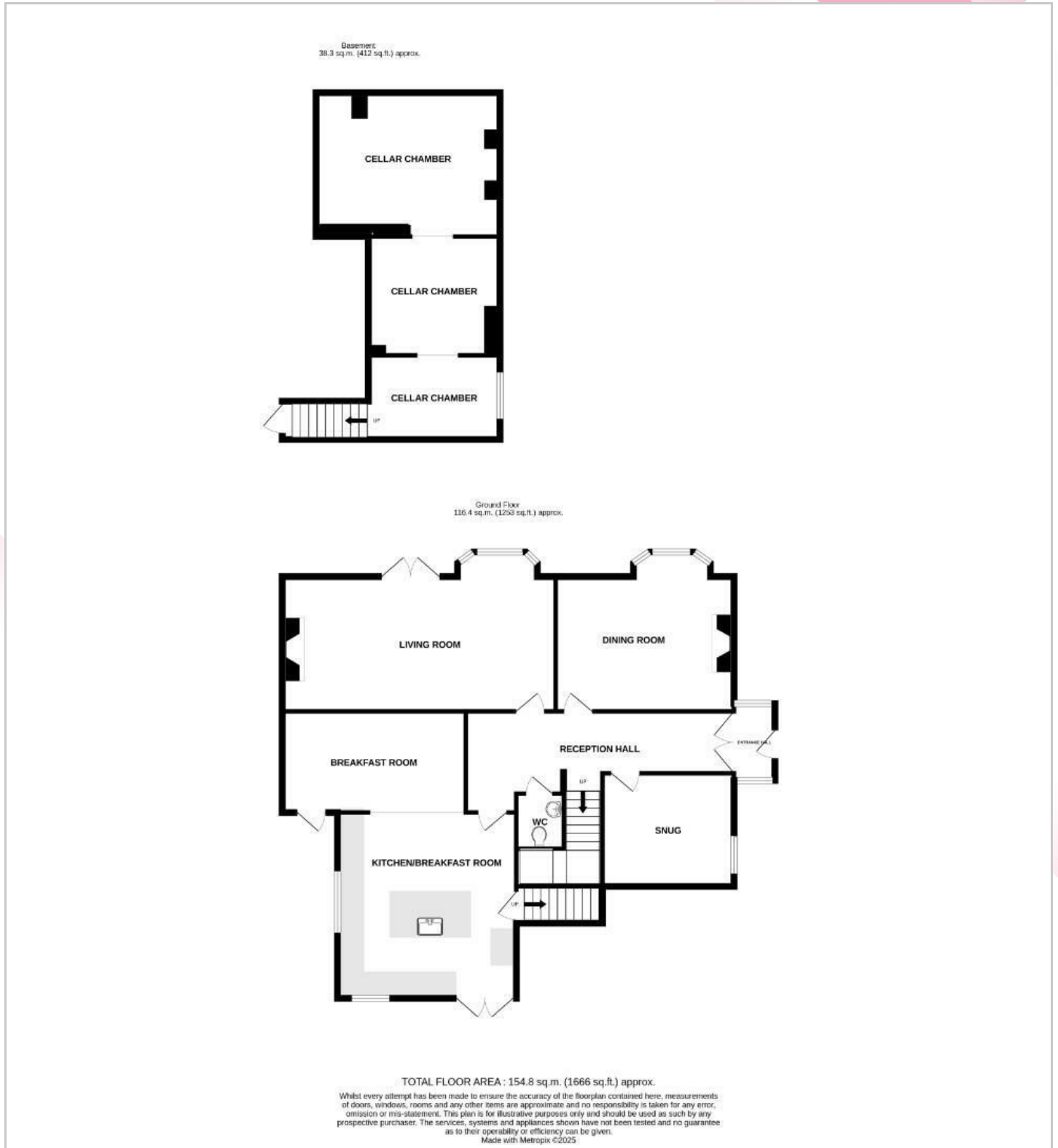
14'4" x 11'2" (4.389m x 3.415m)

## Externally





## Floor Plan

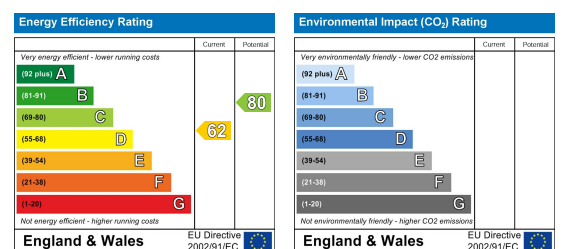


## Viewing

Please contact us on 01606 514 152 if you wish to arrange a viewing appointment for this property or require further information.

These particulars, whilst believed to be accurate are set out as a general outline only for guidance and do not constitute any part of an offer or contract. Intending purchasers should not rely on them as statements of representation of fact, but must satisfy themselves by inspection or otherwise as to their accuracy. No person in this firm's employment has the authority to make or give any representation or warranty in respect of the property.

## Energy Efficiency Graph



01606 514 152 info@cwestateagents.co.uk

@CWestateAgent @CWestateAgents