



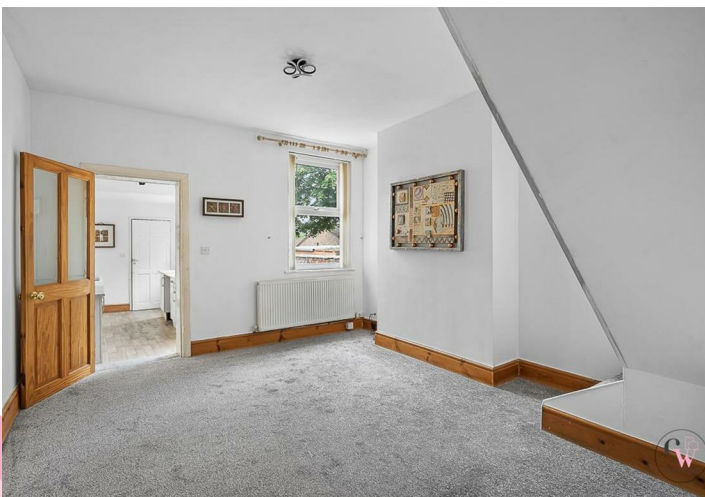
ESTATE AGENTS

www.cwestateagents.co.uk



Wharton Road, Winsford CW7 3AE

Offers over £180,000



01606 514 152 info@cwestateagents.co.uk
[@CWEstateAgent](https://www.facebook.com/CWEstateAgent) [@CWEstateAgents](https://www.instagram.com/CWEstateAgents)

Wharton Road

, Winsford, CW7 3AE

Offers over £180,000



Dining Room

12'1" x 10'10" (3.700m x 3.313m)

Lounge

15'0" x 12'2" (4.597m x 3.727m)

Kitchen

15'7" x 7'5" (4.762m x 2.280m)

Bathroom

10'4" x 6'4" (3.170m x 1.945m)

Landing

Bedroom One

12'1" x 10'4" (3.694m x 3.170m)

En-Suite

5'11" x 3'2" (1.828m x 0.971m)

Bedroom Two

11'9" x 8'10" (3.604m x 2.693m)

Bedroom Three

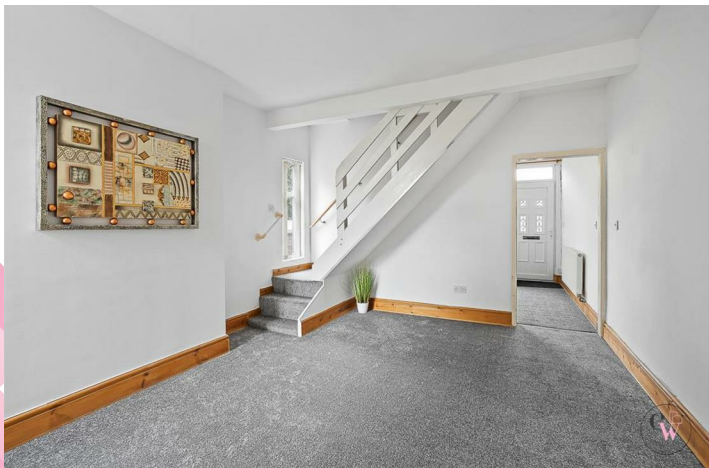
10'4" x 7'2" (3.170m x 2.204m)

Loft Space

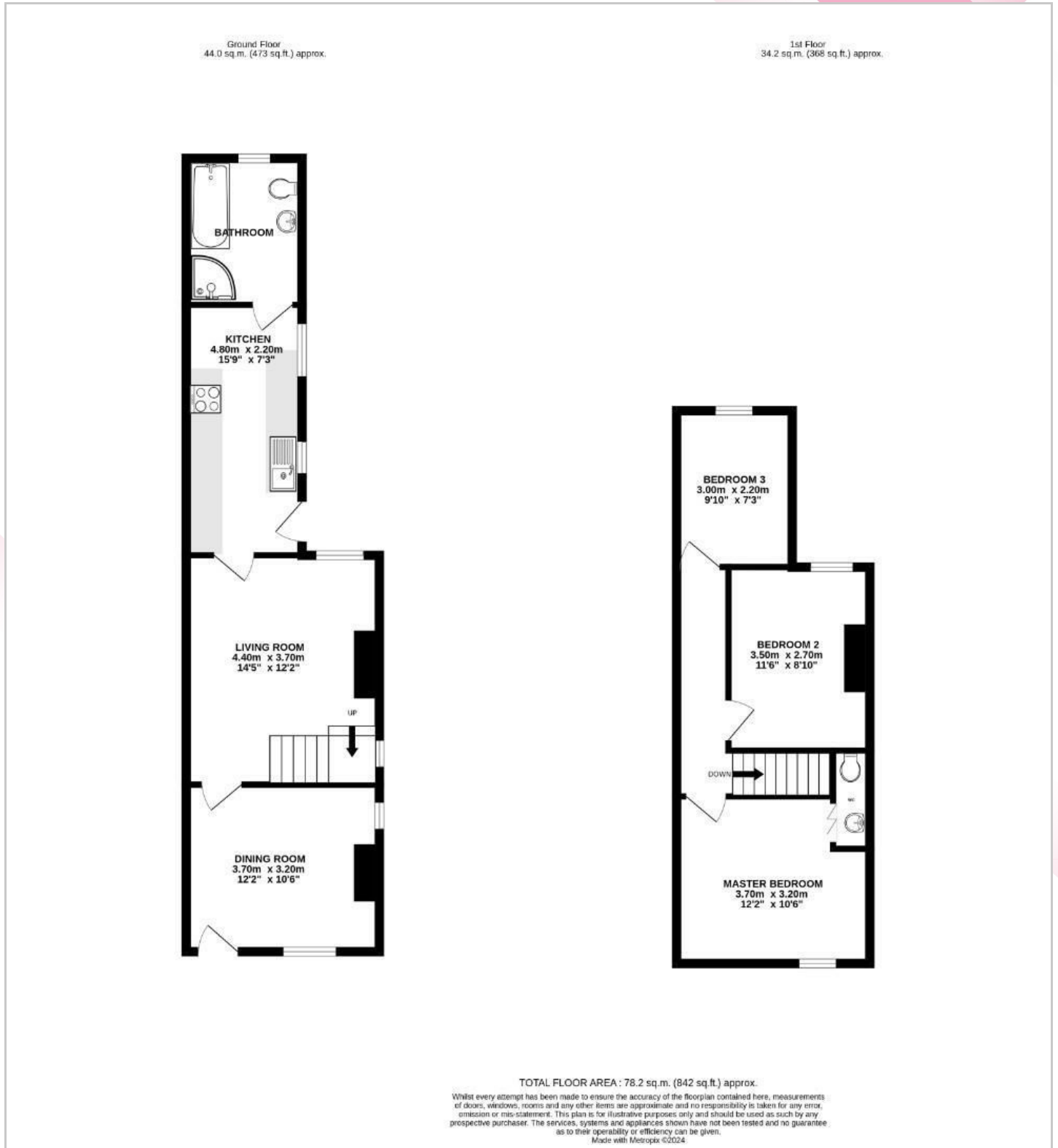
10 x 8. (3.05m x 2.44m.)

Has electrics and is boarded with Velux window.

Externally



Floor Plan

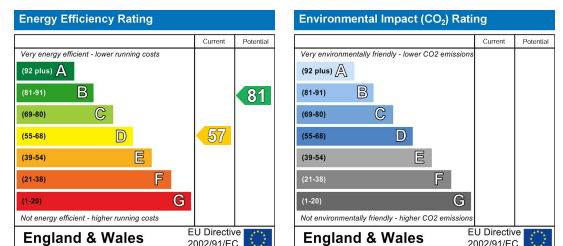


Viewing

Please contact us on 01606 514 152 if you wish to arrange a viewing appointment for this property or require further information.

These particulars, whilst believed to be accurate are set out as a general outline only for guidance and do not constitute any part of an offer or contract. Intending purchasers should not rely on them as statements of representation of fact, but must satisfy themselves by inspection or otherwise as to their accuracy. No person in this firm's employment has the authority to make or give any representation or warranty in respect of the property.

Energy Efficiency Graph



01606 514 152 info@cwestateagents.co.uk
@CWestateAgent @CWestateAgents