



ESTATE AGENTS

www.cwestateagents.co.uk



Wharton Road, Winsford CW7 3AH

Offers in excess of £280,000



01606 514 152 info@cwestateagents.co.uk
 @CWestateAgent @CWestateAgents

Wharton Road

, Winsford, CW7 3AH

Offers in excess of £280,000



Porch

4'6" x 3'7" (1.375m x 1.093m)

Hallway

13'2" x 7'9" (4.014m x 2.376m)

Lounge

14'4" x 11'11" (4.380m x 3.652)

Dining Room

12'0" x 11'11" (3.659m x 3.635m)

Breakfast Kitchen

18'5" x 11'5" (5.617m x 3.494m)

Shower Room

7'9" x 7'8" (2.371m x 2.352m)

Bedroom One

14'4" x 11'11" (4.380m x 3.645m)

Bedroom Two

12'3" x 8'8" (3.741m x 2.661m)

Bedroom Three

12'3" x 12'4" (3.757m x 3.774m)

En-Suite

8'6" x 5'9" (2.605m x 1.765m)

Externally

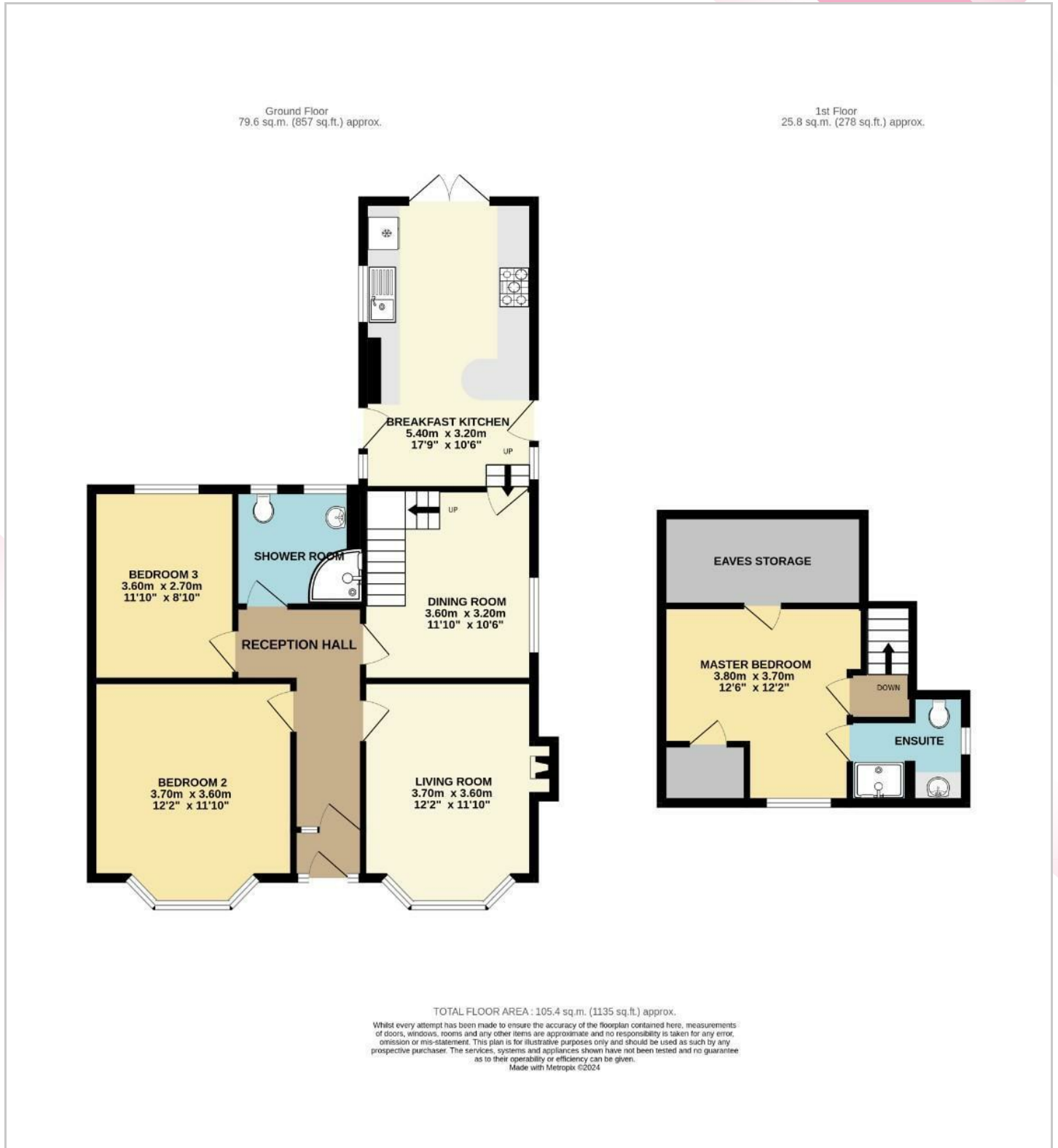
Summer House

17'5" x 7'6" (5.319m x 2.301m)

Power & Lighting



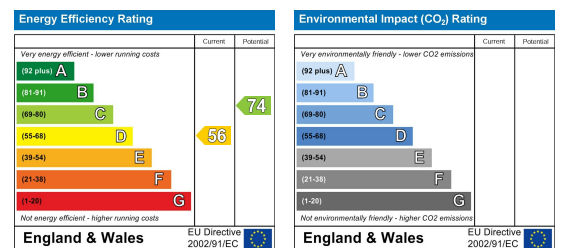
Floor Plan



Viewing

Please contact us on 01606 514 152 if you wish to arrange a viewing appointment for this property or require further information.

Energy Efficiency Graph



These particulars, whilst believed to be accurate are set out as a general outline only for guidance and do not constitute any part of an offer or contract. Intending purchasers should not rely on them as statements of representation of fact, but must satisfy themselves by inspection or otherwise as to their accuracy. No person in this firm's employment has the authority to make or give any representation or warranty in respect of the property.

01606 514 152 info@cwestateagents.co.uk
@CWestateAgent @CWestateAgents