



ESTATE AGENTS

www.cwestateagents.co.uk



Dartmoor Close, Winsford CW7 1GF

Offers in excess of £170,000



01606 514 152 info@cwestateagents.co.uk
 @CWestateAgent @CWestateAgents

Dartmoor Close

, Winsford, CW7 1GF

Offers in excess of £170,000



Hallway

Lounge

12'0" x 12'0" (3.66m x 3.66m)

Breakfast Kitchen

12'1" x 8'11" (3.703m x 2.735m)

Downstairs Cloaks

Landing

Bedroom One

12'1" x 8'10" (3.703m x 2.710m)

Bedroom Two

12'1" x 8'10" (3.703m x 2.710m)

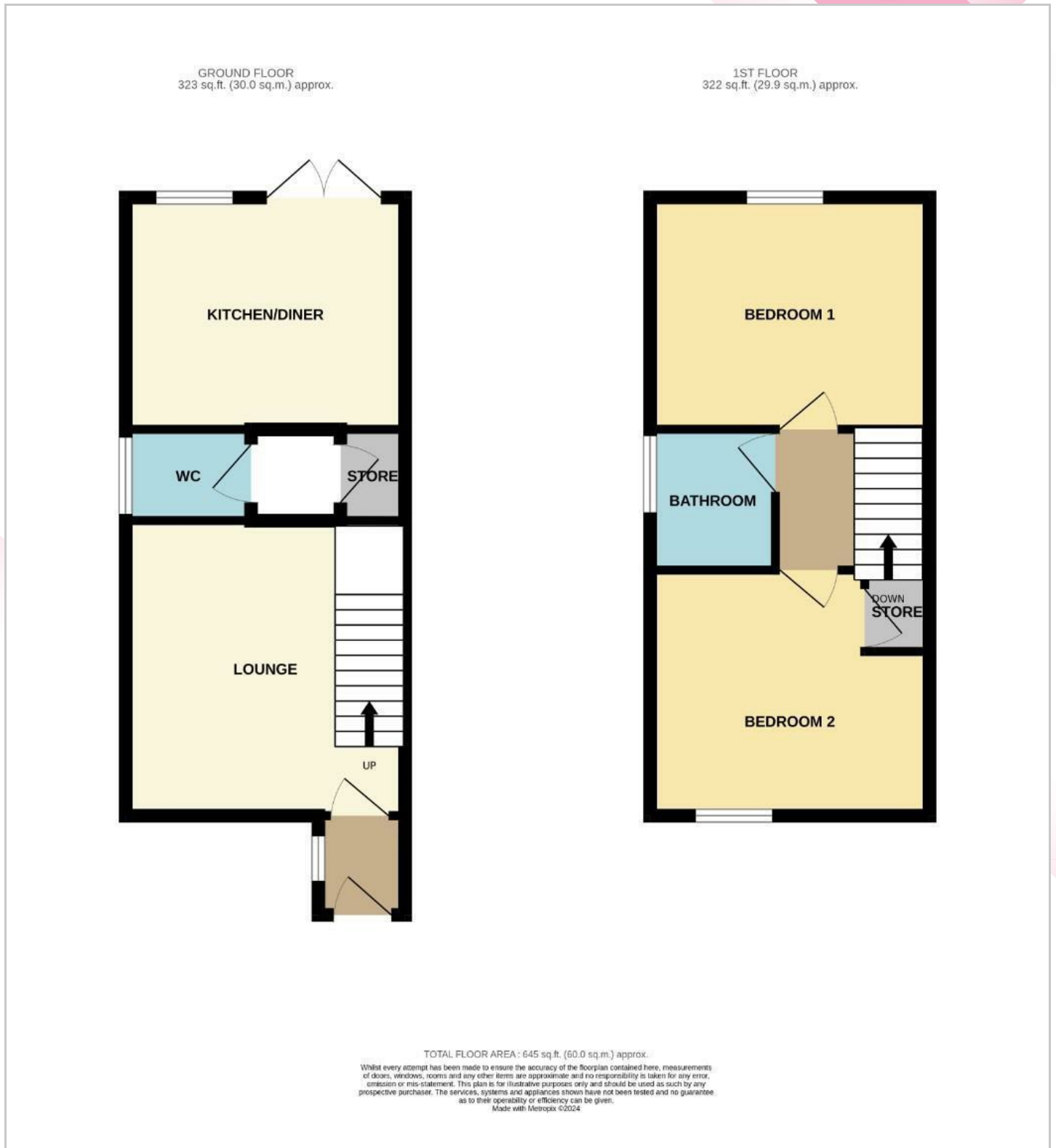
Family Bathroom

7'1" x 5'6" (2.166m x 1.700)

Externally



Floor Plan

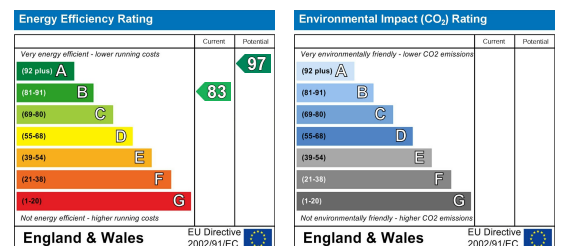


Viewing

Please contact us on 01606 514 152 if you wish to arrange a viewing appointment for this property or require further information.

These particulars, whilst believed to be accurate are set out as a general outline only for guidance and do not constitute any part of an offer or contract. Intending purchasers should not rely on them as statements of representation of fact, but must satisfy themselves by inspection or otherwise as to their accuracy. No person in this firm's employment has the authority to make or give any representation or warranty in respect of the property.

Energy Efficiency Graph



01606 514 152
 info@cwestateagents.co.uk
 @CWestateAgent
 @CWestateAgents