



ESTATE AGENTS

www.cwestateagents.co.uk



Violet Grove, Northwich CW8 4FG

Offers over £140,000



01606 514 152 info@cwestateagents.co.uk

@CWestateAgent @CWestateAgents

Violet Grove

, Northwich, CW8 4FG

Offers over £140,000



Communal Hallway

Ground floor apartment, accessible from rear door where the parking is or the front door also, only the block, six apartments within the block, three ground floor and three first floor. Cleaner every week for the communal areas.

Hallway

14'1" x 3'2" (4.303m x 0.984m)

Lounge/Diner

13'3" x 14'0" (4.064m x 4.286m)

Opening into Kitchen

8'4" x 7'11" (2.558m x 2.415m)

Bedroom One

12'3" x 11'1" (3.739m x 3.381m)

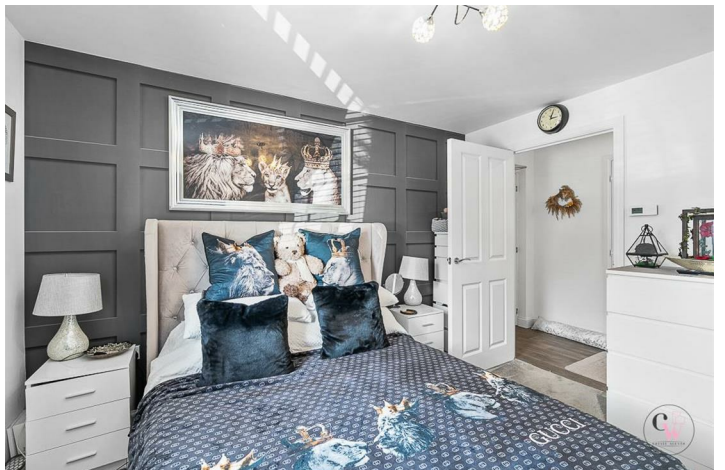
Bedroom Two

8'8" x 7'8" (2.651m x 2.337m)

Bathroom

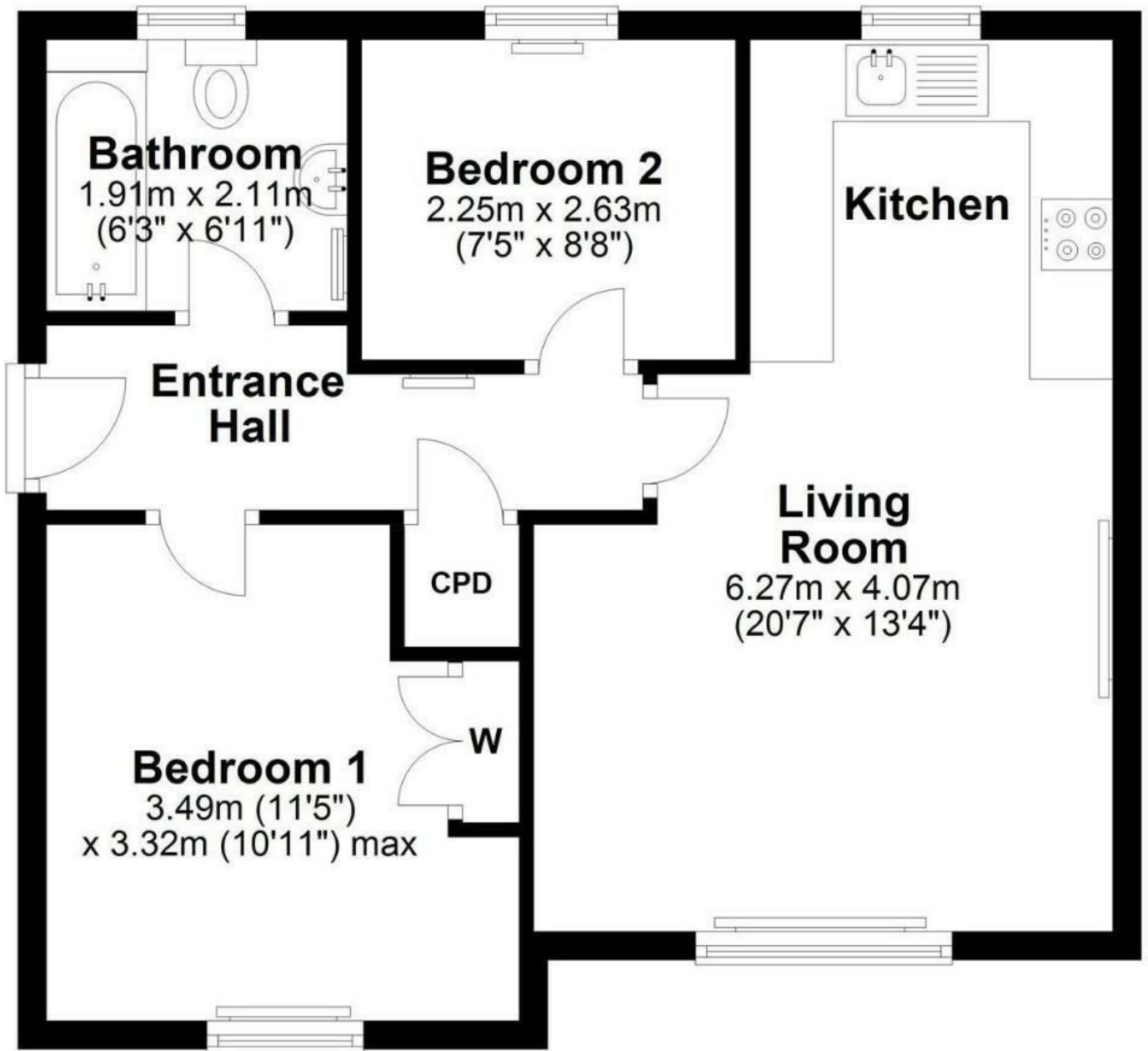
7'1" x 6'11" (2.164m x 2.125m)

Externally



Ground Floor

Approx. 49.1 sq. metres (528.4 sq. feet)

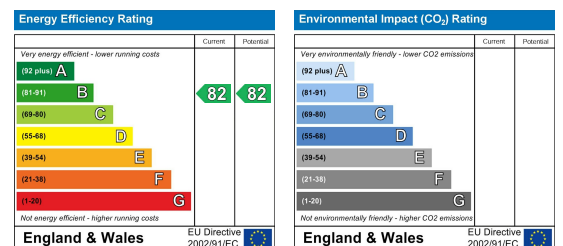


Total area: approx. 49.1 sq. metres (528.4 sq. feet)

Viewing

Please contact us on 01606 514 152 if you wish to arrange a viewing appointment for this property or require further information.

Energy Efficiency Graph



These particulars, whilst believed to be accurate are set out as a general outline only for guidance and do not constitute any part of an offer or contract. Intending purchasers should not rely on them as statements of representation of fact, but must satisfy themselves by inspection or otherwise as to their accuracy. No person in this firm's employment has the authority to make or give any representation or warranty in respect of the property.

01606 514 152
 info@cwestateagents.co.uk
 @CWestateAgent
 @CWestateAgents